

## SMP TO 40 GHz

### SMP Board Connectors

SMP-TH, SMP-EM,  
SMP-MT, SMP-SM

#### Cable Mates:

RF047-A, RF086,  
RF23C, RF405, RF25S



SMP	GENDER	TYPE	PLATING	ORIENTATION	TERMINATION
-----	--------	------	---------	-------------	-------------

**-PF**  
= Plug, Full Detent

**-PL**  
= Plug, Limited Detent

**-PS**  
= Plug, Smooth Bore

**-PC**  
= Plug, Catcher's Mitt

**-P**  
= PCB Mount

**-HG**  
= 30 μ" (0.76 μm)  
Gold center contact,  
10 μ" (0.25 μm)  
Gold outer body

**-ST**  
= Straight

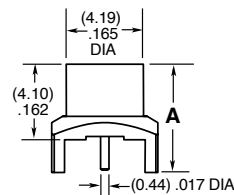
**-SM**  
= Surface Mount  
(Not available with PS)

**-TH"X"**  
= Through-hole  
(Specify "X"  
from chart)

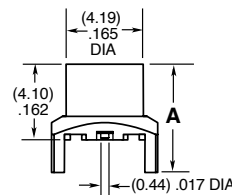
**-MT"X"**  
= Mixed Technology  
(Specify "X"  
from chart)

**-EM**  
= Edge Mount  
(-PL & -PS only)

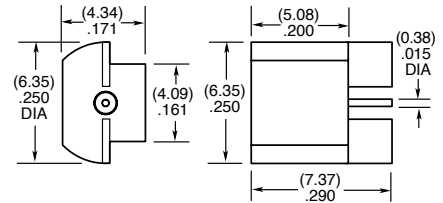
OPTION (X)	A (HEIGHT DIM.)	BOARD THICKNESS
1 (-MT only)	(5.88) .2315	(1.60 mm) .062" PCB
2 (-MT only)	(6.72) .2645	(2.36 mm) .093" PCB
3 (-TH only)	(5.88) .2315	(1.60 mm) .062" PCB
4 (-TH only)	(6.72) .2645	(2.36 mm) .093" PCB



**-PF/-PL/-PS-TH2**



**-MT(X)**



**-EM**

#### ALSO AVAILABLE

Low Frequency options.  
Contact [RFGroup@samtec.com](mailto:RFGroup@samtec.com)

### SMP Bullet Adaptor

SMP-B



SMP	J	TYPE	PLATING	ORIENTATION	BULLET LENGTH
-----	---	------	---------	-------------	---------------

**-B**  
= Bullet Adaptor

**-HG**  
= 30 μ" (0.76 μm)  
Gold center contact,  
10 μ" (0.25 μm)  
Gold outer body

**-ST**  
= Straight

**-0591\***  
= (5.91 mm) .233"

**-0645**  
= (6.45 mm) .254"

**-0690\***  
= (6.90 mm) .272"

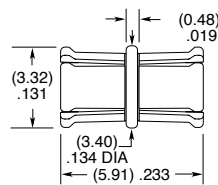
**-0795\***  
= (7.95 mm) .313"

**-0896\***  
= (8.96 mm) .353"

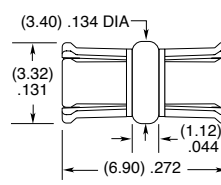
**-1305\***  
= (13.05 mm) .514"

**-1450**  
= (14.50 mm) .571"

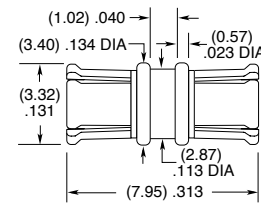
*\*PRELIMINARY*



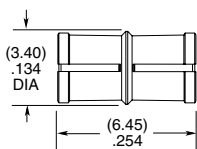
**-0591**



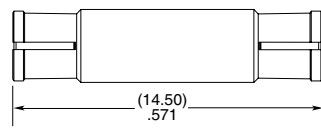
**-0690**



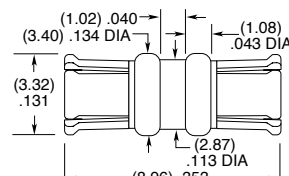
**-0795**



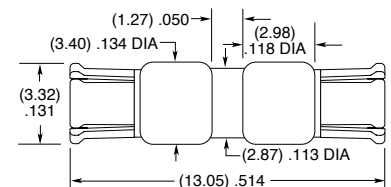
**-0645**



**-1450**



**-0896**



**-1305**