



CDFP CAGES, CONNECTORS & CABLE ASSEMBLIES

400 Gbps Pluggable I/O

Design for Faster Speeds

- 400 Gbps per port, among the highest density ports in the input/output (I/O) market today
- Transfers data at up to 28 Gbps per lane, supporting current and next generation Ethernet and PCIe networking protocols

Maximize Efficient Use of Space

- 16 lanes of bi-directional data communication in one port and one cable assembly, the highest number of lanes per port of an I/O form factor on the market
- 0.75mm contact pitch

Simple, Worry-Free Connections

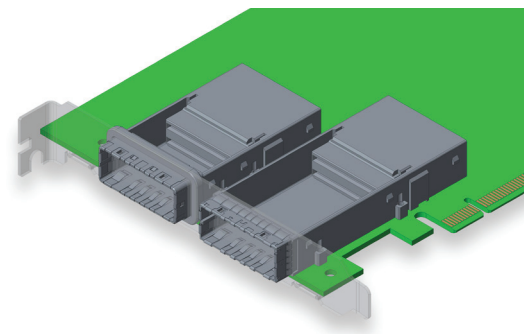
- Pre-assembled, one-piece press-fit connector and cage design simplifies assembly with one-step placement on the board
- EMI springs provide plug to receptacle containment and shield from external interference

Flexibility to Fit Your Design

- Connector and cage design allows you to choose the thermal management options that are best suited for your application
- Support both direct attach copper and active optical interfaces
- Double cable exit allows for increased flexibility for assembly routing
- Customized cabling options available

Applications

- Routers
- High Performance Computing
- Storage
- Controller Cards & Servers
- NIC Cards & GPUs



CDFP Style 1 & 2 cages on representative PCIe card

One of the highest port and bandwidth densities of any pluggable I/O on the market to support current and next generation proprietary or industry standard high speed designs.

Two Styles of Cages

- **Style 1** (shorter cage body)
 - Supports direct attach copper
 - Includes EMI gasket
- **Style 2** (longer cage body)
 - Support direct attach copper and active optical modules
 - Includes EMI springs
 - TE offers a style 2 cage optimized for PCIe applications
- Styles 1 and 2 modules and cages are different mating depths and are not intermateable with each other
- Styles 1 and 2 have the same electrical pinout as defined in the CDFP MSA specification

Style 2 Cable Assemblies

- Double cable exit allows for increased flexibility for assembly routing
- 30 AWG cable with 7.9mm OD
- Up to 2.0M cable reach
- Customized cabling options available - contact your TE representative

Specifications

- Application spec: 114-32114
- Product spec: 108-32065

Ordering Information

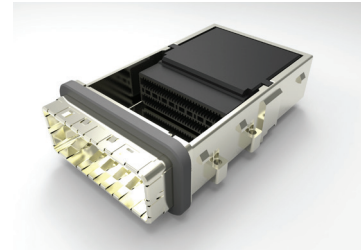
Description	Part Number
CDFP Style 1 Receptacle & Cage Assembly	2291931-1
CDFP Style 2 Receptacle & Cage Assembly	2274233-1
CDFP Style 2 Receptacle & Cage Assembly Optimized for PCIe	2311882-1
CDFP Seating Tool Kit	2215034-1
CDFP Style 2 Cable Assembly, 0.5M	2327779-1
CDFP Style 2 Cable Assembly, 1.0M	2327779-2
CDFP Style 2 Cable Assembly, 1.5M	2327779-3
CDFP Style 2 Cable Assembly, 2.0M	2327779-4

Custom cable assemblies available. Contact your TE representative for more information

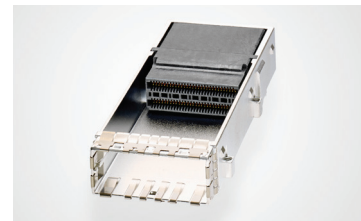
te.com/cdfp

© 2017 TE Connectivity Ltd. family of companies. All Rights Reserved.
1-1773868-5 DND 11/2017

TE Connectivity, TE and TE connectivity (logo) are trademarks of the TE Connectivity Ltd. family of companies. CDFP is part of the ZXP® family of connectors and uses ZXP technology. ZXP is a trademark of Molex, LLC. Other logos, products and company names mentioned herein may be trademarks of their respective owners.



Connector with Style 1 cage



Connector with Style 2 cage



Style 2 cable assembly

Key Features

- CDFP compliant form factor connector, cage and cable assembly
- 16x25 Gbps electrical interface = 400 Gbps total port bandwidth
- 0.75mm pitch, 120 contact pins, dual row paddle card interface
- Connector and cage are provided as an integrated assembly
- Press-fit assembly of connector to host PCB; fasteners secure cage assembly
- Cage materials
 - Housing: nickel plated zinc alloy
 - EMI springs: copper alloy
 - EMI gasket: silver plated urethane
- Connector materials
 - Plastic housing: LCP, UL 94V rated
 - Contacts: phosphor bronze