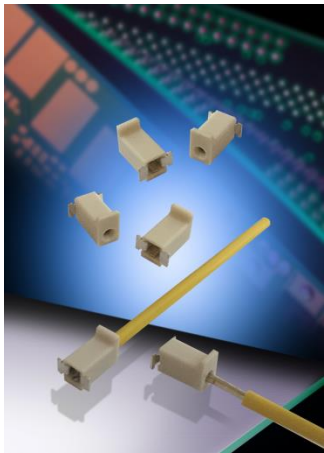


Single Vertical Top Entry

18 AWG Poke-Home

Series 58-9296



[Click for Datasheet](#)

[Scan Code for Web Page](#)

<http://datasheets.avx.com/AVX-58-9296.pdf>
Or visit: www.avx.com



Market Statement

The horizontal poke-home WTB connector market is very crowded with the likes of TE, Molex & Wago, however, AVX is leading the pack in vertical product offerings. In addition to the existing top and bottom entry connectors and contacts already on the market, this new single position vertical top mount connector specifically addresses the volume 18AWG market in drivers and power supplies.

Competitors/AVX Advantages

- Competition:**
- Hand Soldered Wires (no connector)
- Advantages:**
- Reduced PCB footprint: 1pc box contact maximizes board attachment and wire capture strength
 - Pre-Plated phosphor bronze contact provides high spring performance with high fatigue and corrosion resistance
 - Integral molded flange replaces costly kapton tape for automatic SMT placement

Top Selling Points

- Designed to replace hand soldering of wires vertically onto a PCB where repetitive and reliable processes and solder integrity are difficult to maintain.
- Tooled to compete against hand soldering where there is currently no material costs, just labor
- High strength single tine contact securely captures and holds wire in place
- Dual solder tabs positively anchors connector onto PCB



Key Specifications

Sizes

- 1pos

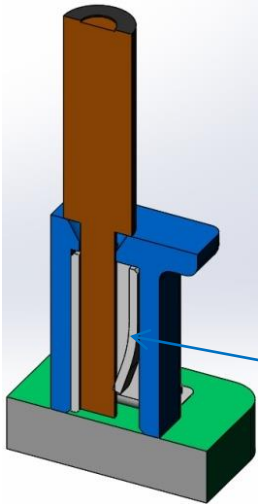
Electrical

- Voltage: 600VAC
- Current: 8A

Environmental

- Operating Temperature: -40°C to +130°C

Product Overview



Transition from **labor intensive** hand soldering to low cost, **repeatable** poke-home

Applications

- Industrial Machine Controls; power supplies, motors, drives, solenoids, sensors, fans, pumps, etc...
- Commercial Buildings; controls, security, fire and sensors
- Smart Grid; meters, breakers and panels
- SSL/LED; drivers, fixtures, signage and streetlights



FAQs

Q: Can a wire be replaced if required?

A: Yes, up to 3 times

Q: Can this connector be potted?

A: It was designed with a very minimal conductor clearance and to have the wire insulation seat flush against the top of the insulator to help minimize potting intrusion. Your customer needs to test with his process and compound

Q: How do I sell against hand soldering where there is no material cost?

A: Your customer needs to be open to examining his true applied costs to include quality, process issues and throughput

Contact Information

North America

Tom Anderson
Product Manager
TEL: (864) 228-3421
Email: Tom.Anderson@avx.com

Europe

Jiri Vojacek
Product Manager
TEL: 420 575 757 564
Email: Vojacekj@avxeur.com

Asia

Andy Kotas
Global Marketing Manager
TEL: 44 7921 388873
Email: Andy.Kotas@avx.com