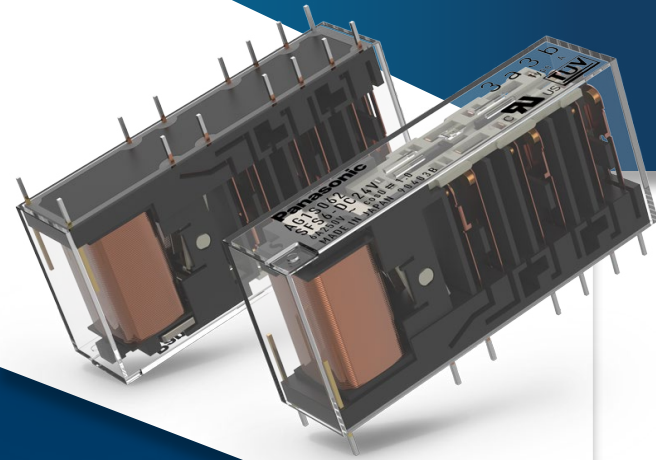


Slim 6A Safety Relay

SFS Series



Slim in Design, Safe for Man and Machine

Thanks to its forcibly guided contact structure, the SFS relay ensures that subsequent operations will be shut down and/or set into a safe state in case of the SFS relay suffering an overload – or from any other circuit abnormalities. This effectively prevents technical defects and thus ensures the safety of man and machine. Additional plus: The relay's slim design only takes little mounting space on the PCB and thereby suits the requirements of modern and minimalistic product designs.

Key Features

- Forcibly guided contacts according to EN 61810-3, Type A
- 4-pole version: 2 NO / 2 NC or 3 NO and 1 NC contacts
- 6-pole version: 4 NO / 2 NC, 5 NO and 1 NC or 3 NC and 3 NO contacts
- Optional LED to indicate operating position
- Optional integrated free wheeling diode
- Sockets for PC boards or DIN-rail mounting available
- Up to 85°C ambient temperature
- VDE approval according to DIN EN 60947-5-1 available
- Minimized needed PCB area



Industrial Automation

- Safety modules / safety PLCs
- AGV (automated guided vehicle)
- Emergency stop



Building Automation

- Gate / Door control
- Elevator control
- Emergency rescue



Transportation

- Signaling
- Axle counting
- Onboard safety systems



For further Information, please contact info@eu.panasonic.com