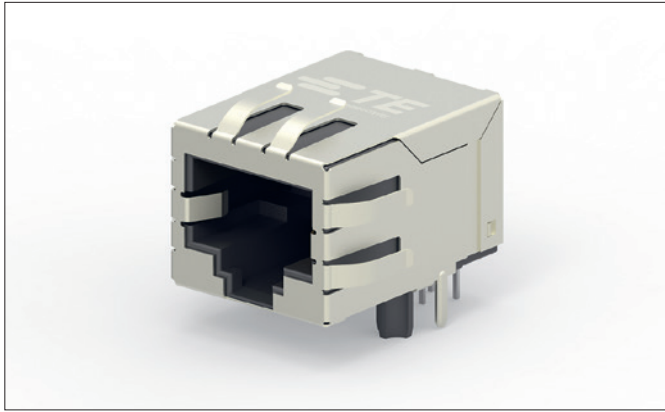


Industrial RJ45 Jacks with Integrated Magnetics



Industrial RJ45 jacks with integrated magnetics offer a highly integrated connectivity solution—from the cable to the physical layer—for Industrial Ethernet. Integrating the magnetics into the jack allows for a much improved EMI noise shielding, enabling more reliable connections. A standardized portfolio with 1x1 straight and R/A, 1x2, 2x1 form factors addresses many of the industrial applications, which allows customers to find the solution they are looking for. Specific industrial requirements such as high reliability through improved corrosion resistance, extended temperature range and long product lifetime are all addressed, including support of the latest reflow soldering production processes.

KEY FEATURES

- Extended temperature range -40...+85 °C
- Minimum product life requirement of 10 years
- 260 °C reflow Pin in Paste Soldering
- Plating thickness 0,76 µm [30 µinch] gold over 1,27 µm [50 µinch] nickel
- Improved EMI integrity and signal integrity performance
- Both current and voltage mode PHY-chips supported

BENEFITS

- The standardized RJ45 jack portfolio with integrated magnetics with 1x1 straight and R/A, 1x2, 2x1 form factors addresses many of the industrial applications
- Integrated magnetics reduces the (analog) design efforts required by the customer
- Thicker gold plating (30 µinch over 50 µinch nickel) improves corrosion resistance reducing equipment electrical problems over lifetime
- TE's products (260 °C reflow capable) fit industrial assembly / solder processes without the need for an extra assembly / solder step
- Extended temperature range addresses industrial equipment requirements where standard temperature (0...70 °C) range is too limited
- Offering standardized Tape & Reel or Tray packing for fully automated or manual assembly process

APPLICATIONS

- All industrial applications requiring Ethernet
- All industrial equipment with RJ45 connectivity
- Industry Computers
- Hubs
- Routers
- Wireless access points
- PLC's
- Switches
- All Ethernet enabled equipment

ELECTRICAL

- 10/100 Base-T Ethernet, 1 Gbps
- Dielectric Withstanding Voltage: 2250 V DC

MECHANICAL

- -40...+85 °C; min. 750 mating cycles

MATERIALS

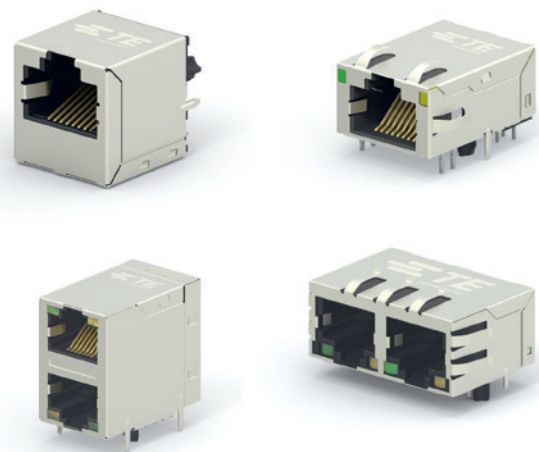
- Plating thickness 0,76 µm [30 µinch] gold over 1,27 µm [50 µinch] nickel
- UL 94 V-0
- 260 °C reflow capable
- High grade LCP (liquid crystal polymer material)

STANDARDS & SPECIFICATIONS

- IEC 60603-7-51 for 1 Gbps
- IEC 60603-7-5 for 10/100 Mbps
- Product Specification 108-94552
- Application Specification 114-94447

PRODUCT COMPLIANCE

- UL recognized
- RoHS compliant



Industrial RJ45 Jacks with Integrated Magnetics

ORDERING INFORMATION

Description	Speed	Ports	Orientation	Tab	LEDs	Packaging	Voltage Mode	Current Mode	TE PN
RJ45 JACK INT.MAG. 10/100 1x1 INV.	10 /100	1x1	R/A	Up	No	T&R	No	Yes	2301994-1
RJ45 JACK INT.MAG. 10/100 LED 1x1 INV.	10/100	1x1	R/A	Up	Yes	T&R	No	Yes	2301994-2
RJ45 JACK INT.MAG. 10/100 1x1 INV.	10/100	1x1	R/A	Up	No	T&R	No	Yes	2301994-3
RJ45 JACK INT.MAG. 10/100 1x1	10/100	1x1	R/A	Down	No	T&R	No	Yes	2301994-4
RJ45 JACK INT.MAG. 1Gb 1x1 INV.	1G	1x1	R/A	Up	No	T&R	Yes	Yes	2301994-5
RJ45 JACK INT.MAG. 1Gb 1x1	1G	1x1	R/A	Down	No	T&R	Yes	Yes	2301994-6
RJ45 JACK INT.MAG. 1Gb 1x1	1G	1x1	R/A	Down	No	T&R	No	Yes	2301994-7
RJ45 JACK INT.MAG. 10/100 LED 1x1 INV.	10/100	1x1	R/A	Up	Yes	T&R	No	Yes	2301994-8
RJ45 JACK INT.MAG. 10/100 LED 1x1	10/100	1x1	R/A	Down	Yes	T&R	No	Yes	2301994-9
RJ45 JACK INT.MAG. 1Gb LED 1x1	1G	1x1	R/A	Down	Yes	T&R	Yes	Yes	1-2301994-0
RJ45 JACK INT.MAG. 1Gb LED 1x1 INV. low	1G	1x1	R/A	Up	Yes	T&R	Yes	Yes	1-2301994-1
RJ45 JACK INT.MAG. 1Gb LED 1x1	1G	1x1	R/A	Down	Yes	T&R	No	Yes	1-2301994-2
RJ45 JACK INT.MAG. Gb 1x1 VERT.	1G	1x1	Vertical	-	No	T&R	Yes	Yes	2301995-1
RJ45 JACK INT.MAG. 10/100 1x1 VERT.	10/100	1x1	Vertical	-	No	T&R	No	Yes	2301995-2
RJ45 JACK INT.MAG. 10/100 LED 1x1 VERT.	10/100	1x1	Vertical	-	Yes	T&R	No	Yes	2301995-3
RJ45 JACK INT.MAG. 1Gb LED 1x1 VERT.	1G	1x1	Vertical	-	Yes	T&R	Yes	Yes	2301995-4
RJ45 JACK INT.MAG. 10/100 1x2 INV.	10/100	1x2	R/A	Up	No	T&R	No	Yes	2301996-1
RJ45 JACK INT.MAG. 10/100 1x2	10/100	1x2	R/A	Down	No	T&R	No	Yes	2301996-2
RJ45 JACK INT.MAG. 1Gb 1x2 INV.	1G	1x2	R/A	Up	No	T&R	Yes	Yes	2301996-3
RJ45 JACK INT.MAG. 1Gb 1x2	1G	1x2	R/A	Down	No	T&R	Yes	Yes	2301996-4
RJ45 JACK INT.MAG. 10/100 LED 1x2 INV.	10/100	1x2	R/A	Up	Yes	T&R	No	Yes	2301996-5
RJ45 JACK INT.MAG. 10/100 LED 1x2	10/100	1x2	R/A	Down	Yes	T&R	No	Yes	2301996-6
RJ45 JACK INT.MAG. 1Gb LED 1x2 INV.	1G	1x2	R/A	Up	Yes	T&R	Yes	Yes	2301996-7
RJ45 JACK INT.MAG. 1Gb LED 1x2	1G	1x2	R/A	Down	Yes	T&R	Yes	Yes	2301996-8
RJ45 JACK INT.MAG. 10/100 1x1 INV.	10/100	1x1	R/A	Up	No	Tray	No	Yes	5-2301994-1
RJ45 JACK INT.MAG. 10/100 LED 1x1 INV.	10/100	1x1	R/A	Up	No	Tray	No	Yes	5-2301994-2
RJ45 JACK INT.MAG. 10/100 1x1 INV.	10/100	1x1	R/A	Up	No	Tray	No	Yes	5-2301994-3
RJ45 JACK INT.MAG. 10/100 1x1	10/100	1x1	R/A	Down	No	Tray	No	Yes	5-2301994-4
RJ45 JACK INT.MAG. 1Gb 1x1 INV.	1G	1x1	R/A	Up	No	Tray	Yes	Yes	5-2301994-5
RJ45 JACK INT.MAG. 1Gb 1x1	1G	1x1	R/A	Down	No	Tray	Yes	Yes	5-2301994-6
RJ45 JACK INT.MAG. 1Gb 1x1	1G	1x1	R/A	Down	No	Tray	No	Yes	5-2301994-7
RJ45 JACK INT.MAG. 10/100 LED 1x1 INV.	10/100	1x1	R/A	Up	Yes	Tray	No	Yes	5-2301994-8
RJ45 JACK INT.MAG. 10/100 LED 1x1	10/100	1x1	R/A	Down	Yes	Tray	No	Yes	5-2301994-9
RJ45 JACK INT.MAG. 1Gb LED 1x1	1G	1x1	R/A	Down	Yes	Tray	Yes	Yes	6-2301994-0
RJ45 JACK INT.MAG. 1Gb LED 1x1 INV. - low	1G	1x1	R/A	Up	Yes	Tray	Yes	Yes	6-2301994-1
RJ45 JACK INT.MAG. 1Gb LED 1x1	1G	1x1	R/A	Down	Yes	Tray	No	Yes	6-2301994-2

Industrial RJ45 Jacks with Integrated Magnetics

ORDERING INFORMATION

Description	Speed	Ports	Orientation	Tab	LEDs	Packaging	Voltage Mode	Current Mode	TE PN
RJ45 JACK INT.MAG. Gb 1x1 VERT.	1G	1x1	Vertical	-	No	Tray	Yes	Yes	5-2301995-1
RJ45 JACK INT.MAG. 10/100 1x1 VERT.	10/100	1x1	Vertical	-	No	Tray	No	Yes	5-2301995-2
RJ45 JACK INT.MAG. 10/100 LED 1x1 VERT.	10/100	1x1	Vertical	-	Yes	Tray	No	Yes	5-2301995-3
RJ45 JACK INT.MAG. 1Gb LED 1x1 VERT.	1G	1x1	Vertical	-	Yes	Tray	Yes	Yes	5-2301995-4
RJ45 JACK INT.MAG. 10/100 1x2 INV.	10/100	1x2	R/A	Up	No	Tray	No	Yes	5-2301996-1
RJ45 JACK INT.MAG. 10/100 1x2	10/100	1x2	R/A	Down	No	Tray	No	Yes	5-2301996-2
RJ45 JACK INT.MAG. 1Gb 1x2 INV.	1G	1x2	R/A	Up	No	Tray	Yes	Yes	5-2301996-3
RJ45 JACK INT.MAG. 1Gb 1x2	1G	1x2	R/A	Down	No	Tray	Yes	Yes	5-2301996-4
RJ45 JACK INT.MAG. 10/100 LED 1x2 INV.	10/100	1x2	R/A	Up	Yes	Tray	No	Yes	5-2301996-5
RJ45 JACK INT.MAG. 10/100 LED 1x2	10/100	1x2	R/A	Down	Yes	Tray	No	Yes	5-2301996-6
RJ45 JACK INT.MAG. 1Gb LED 1x2 INV.	1G	1x2	R/A	Up	Yes	Tray	Yes	Yes	5-2301996-7
RJ45 JACK INT.MAG. 1Gb LED 1x2	1G	1x2	R/A	Down	Yes	Tray	Yes	Yes	5-2301996-8
RJ45 JACK INT.MAG. 10/100 2x1	10/100	2x1	R/A	Down	No	Tray	No	Yes	2301997-2
RJ45 JACK INT.MAG. 1Gb 2x1	1G	2x1	R/A	Down	No	Tray	Yes	Yes	2301997-4
RJ45 JACK INT.MAG. 10/100 LED 2x1	10/100	2x1	R/A	Down	Yes	Tray	No	Yes	2301997-5
RJ45 JACK INT.MAG. 1Gb LED 2x1	1G	2x1	R/A	Down	Yes	Tray	Yes	Yes	2301997-7

For additional features or requests, please reach out to your TE sales representative or our customer care specialists.

te.com/rj45magnetics

TE Connectivity, TE Connectivity (logo) and Every Connection Counts are trademarks. All other logos, products and/or company names referred to herein might be trademarks of their respective owners.

The information given herein, including drawings, illustrations and schematics which are intended for illustration purposes only, is believed to be reliable. However, TE Connectivity makes no warranties as to its accuracy or completeness and disclaims any liability in connection with its use. TE Connectivity's obligations shall only be as set forth in TE Connectivity's Standard Terms and Conditions of Sale for this product and in no case will TE Connectivity be liable for any incidental, indirect or consequential damages arising out of the sale, resale, use or misuse of the product. Users of TE Connectivity products should make their own evaluation to determine the suitability of each such product for the specific application.

© 2017 TE Connectivity Ltd. family of companies All Rights Reserved.

1-1773921-5 06/2017 Original: WR

PRODUCT SHEET

TE Connectivity Automation & Control

Pfnorstr. 1
D-64293 Darmstadt
Germany

+49 6151 607 1999

www.te.com

LEGAL ENTITY