

INDUSTRIAL MINI-I/O CAT5E FIELD INSTALLABLE CONNECTOR

The Industrial Mini I/O connector system is a compact, wire-to-wire and wire-to-board solution for reliable serial, bus and Ethernet connections in industrial applications. With only one quarter the size of conventional RJ45 plugs, the Industrial Mini I/O connector provides critical space saving on a PCB – space that can now be used more efficiently. Mini-I/O Field Installable cable connector (2 parts) allows easy, quick and error free installation without the need for tools and wire length preparation.

The connector automatically cuts off the wire at the optimal length during contacting, guaranteeing optimal (Cat5e) transmission performance. TE's Industrial Mini I/O solution has been designed for the stringent demands of industrial environments.

BENEFITS

- Field installable technology enable easy, quick and error free installation
- With its innovative IDC termination, it decreases the time usually needed to terminate the wires by soldering
- With only 25% of the size of a conventional RJ45, TE's Industrial Mini I/O solution allows you to save on valuable boards space
- EMI and Signal Integrity are optimized by the signal path design and the 360 degrees shielding brings in next generations to Cat6A performance
- High retention of the board connectors, combined with a compact metal latching mechanism prevents accidental pull or unmating, reducing potential system down time
- Allows latch activation in high density applications

Industrial Mini-I/O Cat5e Field Installable Connector

FEATURES

- **Consists of only two parts:** Termination unit and outer housing
- **Toolless Installation:** Standard tools can be used as assembly aid
- Integrated wire termination and wire cut off
- Rugged die casted housing for optimal protection and shielding
- Small form factor reduces PCB area and equipment height
- 2 unique keying styles (Type 1 / Type 2) to prevent mismatching

APPLICATIONS

- DIN rail equipment I/O PLC etc.
- Motor drives
- Robotics
- Other Ethernet application in shock and vibration prone environments (e.g. field devices with Ethernet connectivity) or in the need of space saving (compared to RJ45)

MATERIALS

- Die Cast Housing
- **Contact:** Copper alloy

MECHANICAL

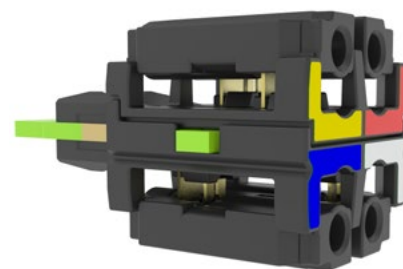
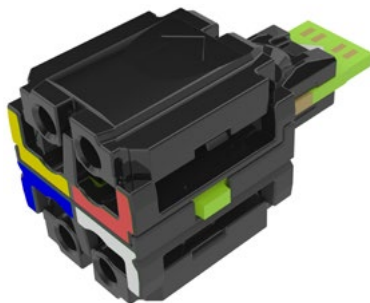
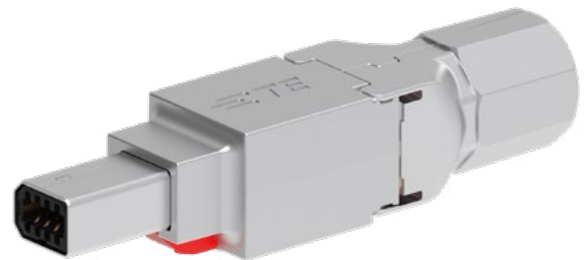
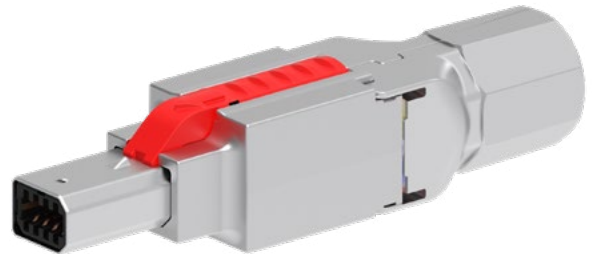
- **Robust Die Cast Housing**
- **Operating Temperature:** -55°C up to +105°C
- **Durability:** 750 Cycles
- **Cable retention force:** 100N

ELECTRICAL

- Cat5e transmission
- 60 VDC rated
- **Current rating:** ≤ 1 A

STANDARDS

- IEC61076-3-122
- UL 1863
- 108-94740-1
- 114-94602



Industrial Mini-I/O Cat5e Field Installable Connector

PART NUMBER LIST

Part Number	Part Description	Diameter (mm)	Packaging pcs.
2350278-1	Mini-I/O Field Installable Cable Connector (2 wire pairs) Type I	4.7-5.7	12
1-2350278-1	Mini-I/O Field Installable Cable Connector (2 wire pairs) Type I	4.7-5.7	60
2350278-2	Mini-I/O Field Installable Cable Connector (2 wire pairs) Type II	4.7-5.7	12
1-2350278-2	Mini-I/O Field Installable Cable Connector (2 wire pairs) Type II	4.7-5.7	60
2350323-1	Mini-I/O Field Installable Cable Connector (2 wire pairs) Type I	5.8-8.1	12
1-2350323-1	Mini-I/O Field Installable Cable Connector (2 wire pairs) Type I	5.8-8.1	60
2350323-2	Mini-I/O Field Installable Cable Connector (2 wire pairs) Type II	5.8-8.1	12
1-2350323-2	Mini-I/O Field Installable Cable Connector (2 wire pairs) Type II	5.8-8.1	60

te.com

© 2021 TE Connectivity. All Rights Reserved.

TE Connectivity, TE connectivity (logo) and Every Connection Counts are trademarks owned or licensed by TE Connectivity. All other logos, products and/or company names referred to herein might be trademarks of their respective owners.

While TE has made every reasonable effort to ensure the accuracy of the information in this brochure, TE does not guarantee that it is error-free, nor does TE make any other representation, warranty or guarantee that the information is accurate, correct, reliable or current. TE reserves the right to make any adjustments to the information contained herein at any time without notice. TE expressly disclaims all implied warranties regarding the information contained herein, including, but not limited to, any implied warranties of merchantability or fitness for a particular purpose. The dimensions in this catalog are for reference purposes only and are subject to change without notice. Specifications are subject to change without notice. Consult TE for the latest dimensions and design specifications.

1-1773985-8 01/21 AK