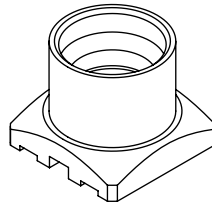


DESIGNED AND DIMENSIONED IN INCHES[MILLIMETERS]
ALL DIMENSIONS REFERENCE EXCEPT AS SHOWN

DO NOT SCALE FROM THIS PRINT

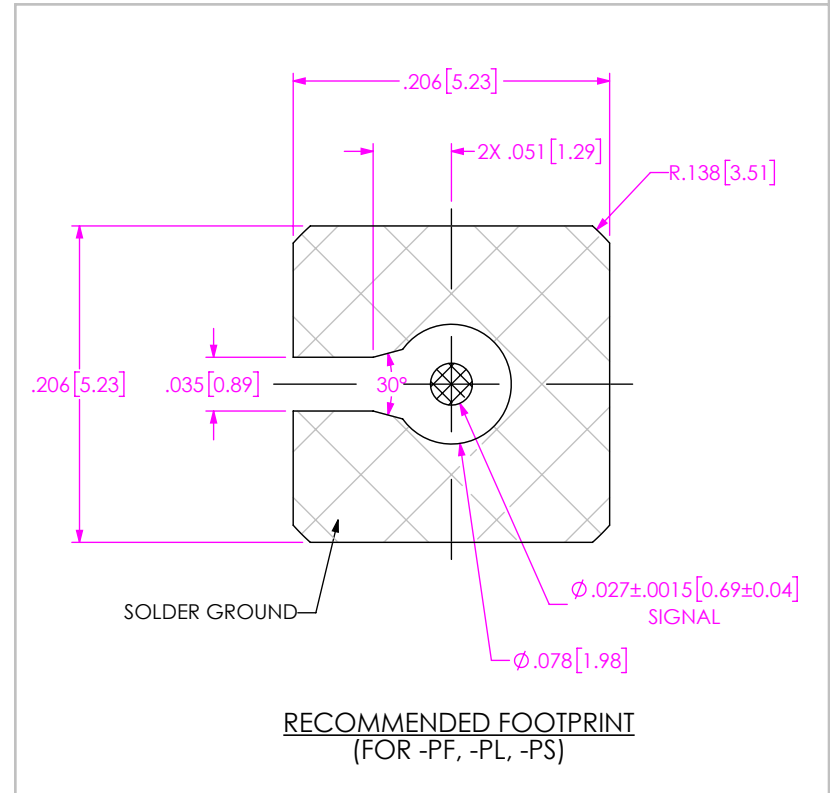
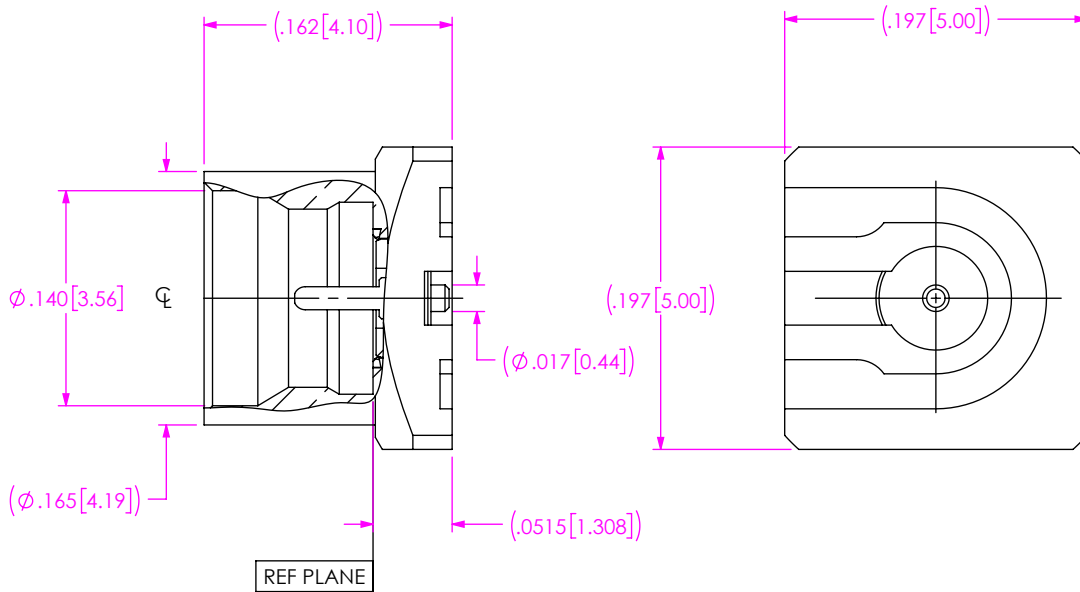


SMP-PX-P-XX-ST-SM

- GENDER**
 - PF: FULL DETENT
 - PL: LIMITED DETENT
 - PS: SMOOTH BORE
 - PC: CATCHER'S MITT
- TYPE**
 - P: PCB
- TERMINATION**
 - SM: SURFACE MOUNT
- ORIENTATION**
 - ST: STRAIGHT

PLATING SPECIFICATION

- HG: 30μ" HEAVY GOLD ON CENTER CONTACT, 10μ" GOLD ON OUTER BODY



NOTES:

1. TRAYS TO BE STANDARD PACKAGING

<p>PROPRIETARY NOTE</p> <p>THIS DOCUMENT CONTAINS CONFIDENTIAL AND PROPRIETARY INFORMATION AND ALL DESIGN, MANUFACTURING, REPRODUCTION, USE, PATENT RIGHTS AND SALES RIGHTS ARE EXPRESSLY RESERVED BY SAMTEC, INC. THIS DOCUMENT SHALL NOT BE DISCLOSED, IN WHOLE OR PART, TO ANY UNAUTHORIZED PERSON OR ENTITY NOR REPRODUCED, TRANSFERRED OR INCORPORATED IN ANY OTHER PROJECT IN ANY MANNER WITHOUT THE EXPRESS WRITTEN CONSENT OF SAMTEC, INC.</p>	<p>DO NOT SCALE DRAWING SHEET SCALE: 8:1</p>	
	<p>MATERIAL: BODY & PIN: GOLD PLATED BRASS INSULATOR: PEEK</p>	<p>DESCRIPTION: SMP SURFACE MOUNT PLUG</p>
	<p>DWG. NO. SMP-PX-P-XX-ST-SM</p>	
<p>BY: WILLY Y</p>		<p>10/12/2023</p>
<p>SHEET 1 OF 3</p>		<p>SHEET 1 OF 3</p>

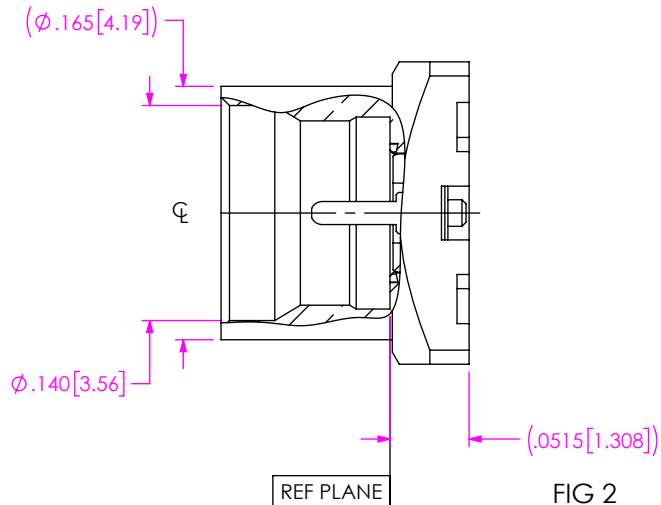
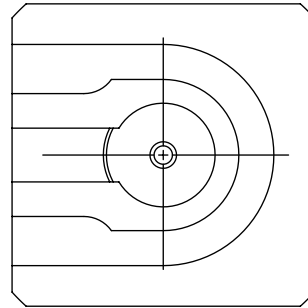
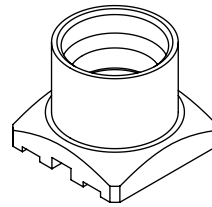


FIG 2
SMP-PL-P-XX-ST-SM SHOWN
(SAME AS FIG 1, EXCEPT AS SHOWN)

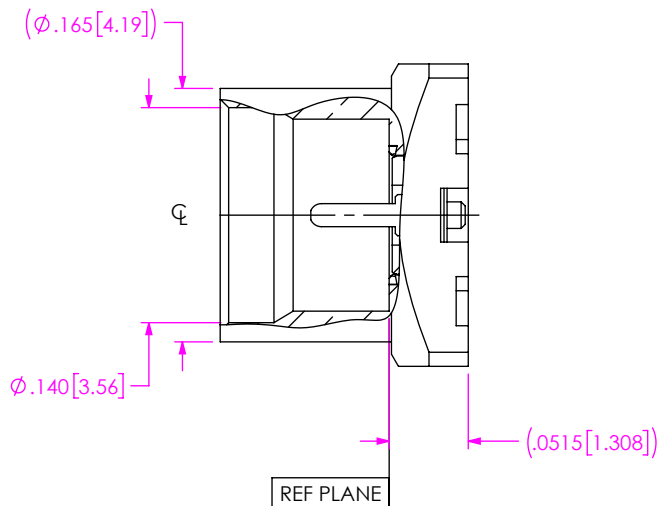
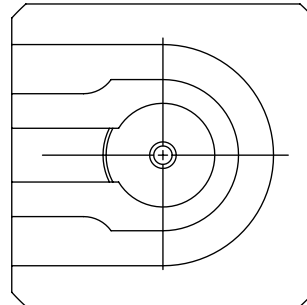
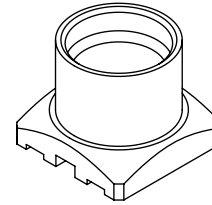
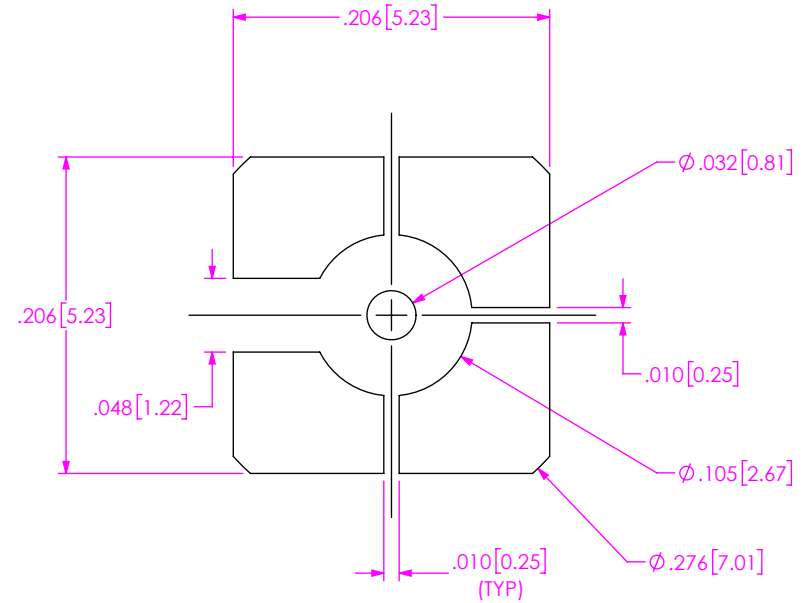



FIG 3
SMP-PS-P-XX-ST-SM SHOWN
(SAME AS FIG 1, EXCEPT AS SHOWN)



**RECOMMENDED STENCIL APERTURE LAYOUT
(FOR -PF, -PL, -PS)**

NOTES:

2. RECOMMENDED STENCIL THICKNESS = .004".

<p>PROPRIETARY NOTE THIS DOCUMENT CONTAINS CONFIDENTIAL AND PROPRIETARY INFORMATION AND ALL DESIGN, MANUFACTURING, REPRODUCTION, USE, PATENT RIGHTS AND SALES RIGHTS ARE EXPRESSLY RESERVED BY SAMTEC, INC. THIS DOCUMENT SHALL NOT BE DISCLOSED, IN WHOLE OR PART, TO ANY UNAUTHORIZED PERSON OR ENTITY NOR REPRODUCED, TRANSFERRED OR INCORPORATED IN ANY OTHER PROJECT IN ANY MANNER WITHOUT THE EXPRESS WRITTEN CONSENT OF SAMTEC, INC.</p>	 520 PARK EAST BLVD, NEW ALBANY, IN 47150 PHONE: 812-944-6733 FAX: 812-948-5047 e-Mail info@SAMTEC.com code 55322
<p>DO NOT SCALE DRAWING</p>	<p>DESCRIPTION: SMP SURFACE MOUNT PLUG</p>
<p>SHEET SCALE: 8:1</p>	<p>DWG. NO. SMP-PX-P-XX-ST-SM</p>
<p>BY: WILLY Y</p>	<p>10/12/2023 SHEET 2 OF 3</p>

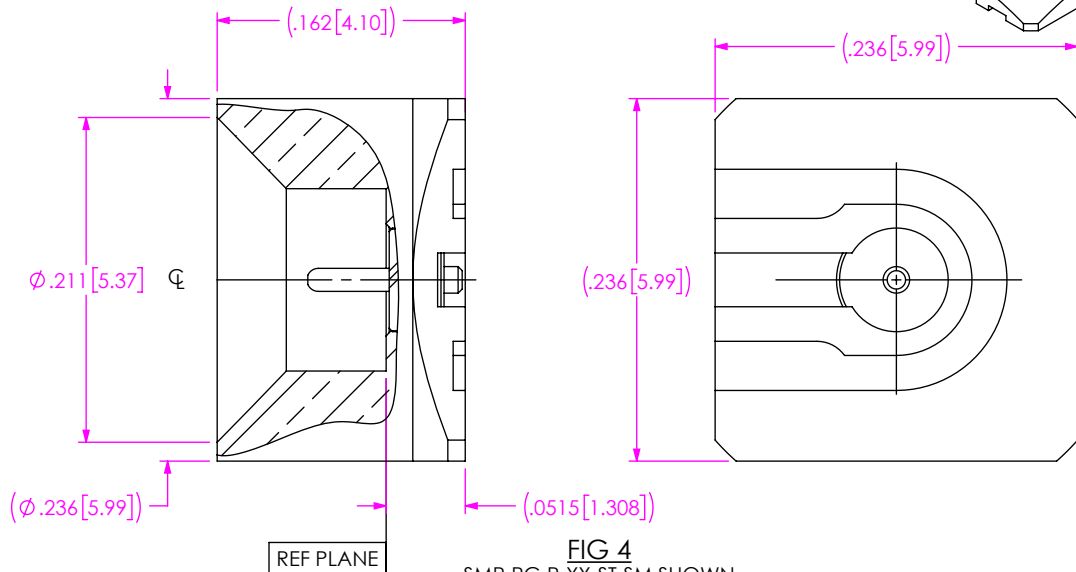
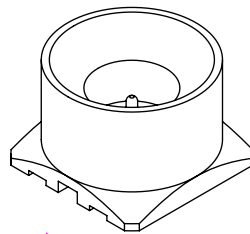
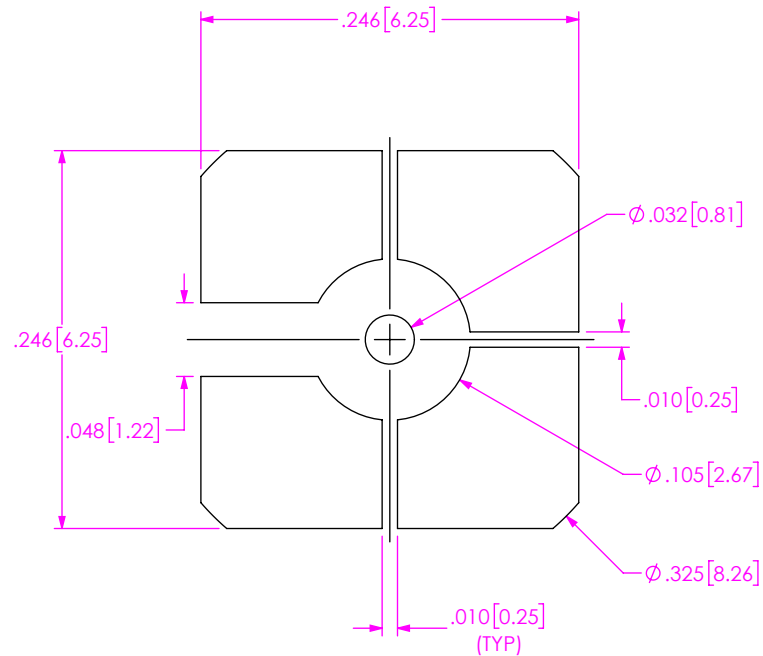


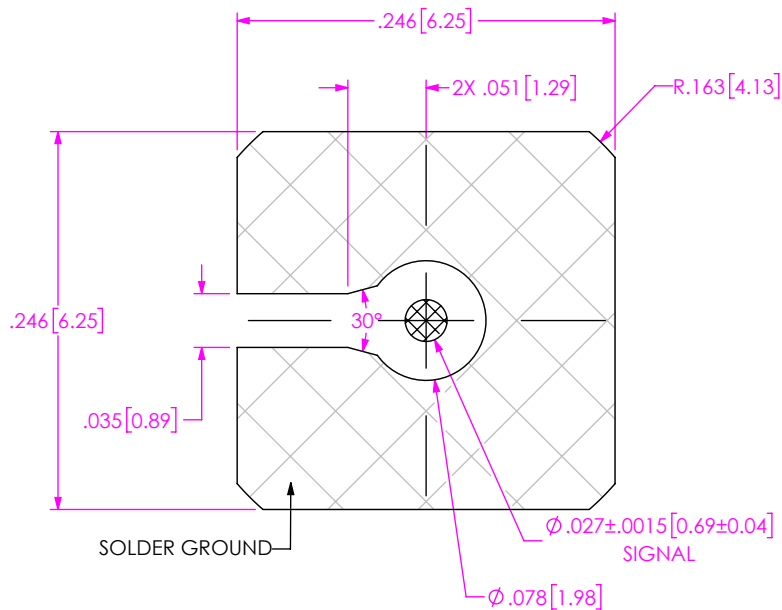
FIG 4
SMP-PC-P-XX-ST-SM SHOWN
(SAME AS FIG 1, EXCEPT AS SHOWN)



**RECOMMENDED STENCIL APERTURE LAYOUT
(FOR -PC ONLY)**

NOTES:

2. RECOMMENDED STENCIL THICKNESS = .004"



**RECOMMENDED FOOTPRINT
(FOR -PC ONLY)**

PROPRIETARY NOTE
THIS DOCUMENT CONTAINS CONFIDENTIAL AND PROPRIETARY INFORMATION AND ALL DESIGN, MANUFACTURING, REPRODUCTION, USE, PATENT RIGHTS AND SALES RIGHTS ARE EXPRESSLY RESERVED BY SAMTEC, INC. THIS DOCUMENT SHALL NOT BE DISCLOSED, IN WHOLE OR PART, TO ANY UNAUTHORIZED PERSON OR ENTITY NOR REPRODUCED, TRANSFERRED OR INCORPORATED IN ANY OTHER PROJECT IN ANY MANNER WITHOUT THE EXPRESS WRITTEN CONSENT OF SAMTEC, INC.



520 PARK EAST BLVD, NEW ALBANY, IN 47150
PHONE: 812-944-6733 FAX: 812-948-5047
e-Mail info@SAMTEC.com code 55322

DO NOT SCALE DRAWING

SHEET SCALE: 8:1

DESCRIPTION:
SMP SURFACE MOUNT PLUG

DWG. NO.
SMP-PX-P-XX-ST-SM

BY: WILLY Y 10/12/2023 SHEET 3 OF 3