

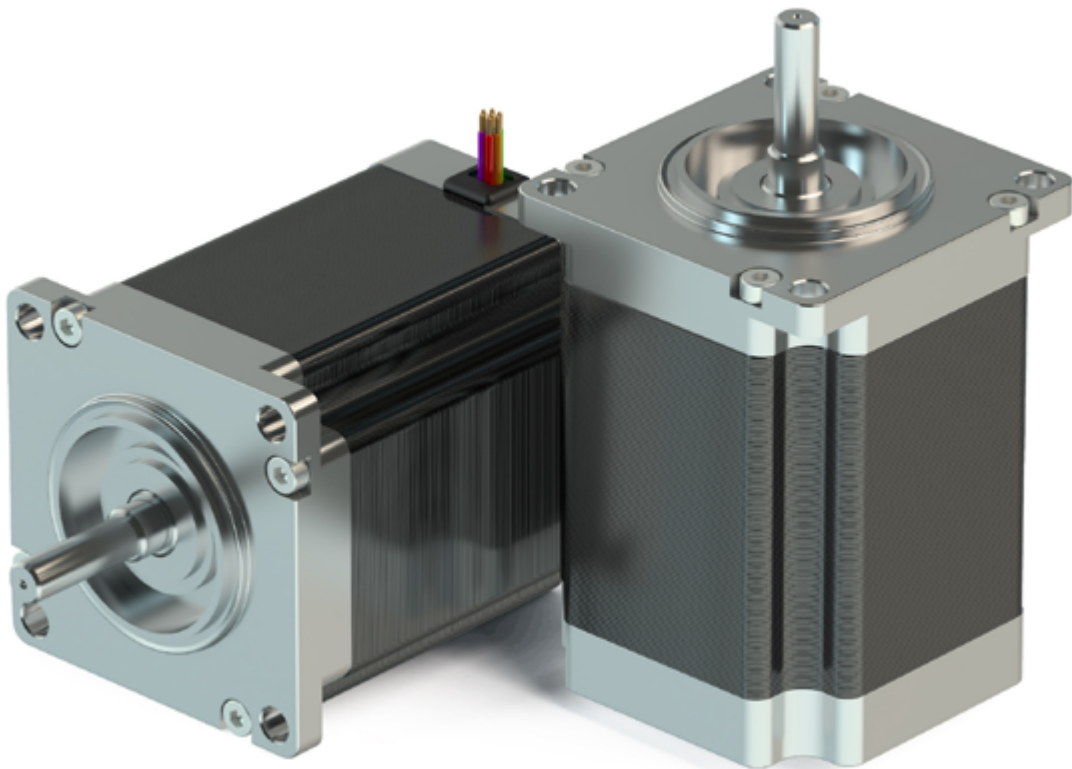


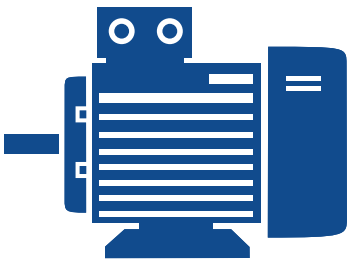
presented by  
**EBV**Elektronik  
| An Avnet Company |

# TOSHIBA

# ESSENTIAL GUIDE TO STEPPER MOTOR CONTROLLERS/DRIVERS

Lou Frenzel, Contributing Editor





## CONTENT

- Stepper Motors 101 – A brief introduction to stepper motors
- Stepper motor applications – A sampling of common uses
- Stepper motor tutorial – How steppers work
- Stepper control basics – The details of stepping operations
- Modern stepper ICs – Examples of new available controllers

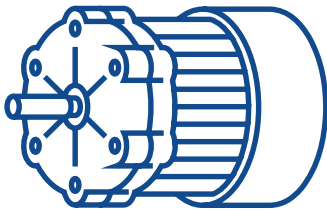
## Introduction

Stepper motors are just one of several types of DC motors used in a range of electrical and electronic products. While the motor specifications are important, it is the electronic control circuitry that is the secret to achieving the desired features and performance. This white paper addresses the stepper motor control function and introduces several integrated circuits (ICs) that can provide superior control for many common applications.

## Introduction to Stepper Motors

When choosing a small motor for use in an industrial, business, or consumer product, the first design decision is the type of motor. Of course, the two main categories are AC and DC motors. Assume that the power source is DC. There are three basic categories of DC motor: brushed, brushless (BLDC), and stepper motors. All of these create a shaft rotation produced by the interaction of a permanent magnet and an electromagnet. The method of applying and controlling the power to the motor determines the choice for a given application.

There are three types of steppers: permanent magnet (PM), variable reluctance (VR), and hybrid. The PM stepper is small so is used in applications where size is critical and the load is small. PM steppers have good torque. The VR stepper features better positioning resolution and precision, but it has poor or low torque. Hybrid steppers combine the best features of the other two types of steppers. They provide good torque as well as the desirable high resolution and precision. The most widely used type is the hybrid stepper.

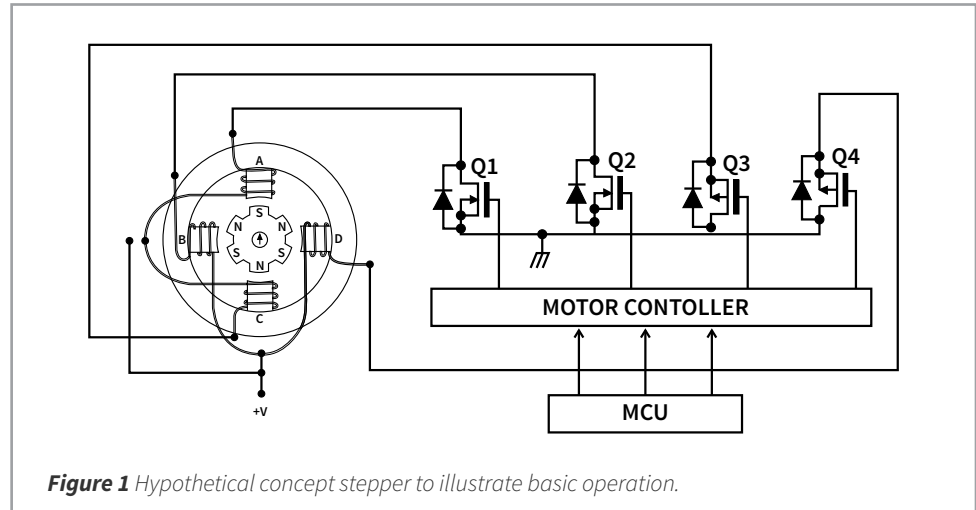


**Stepper Motor Applications** Steppers are used in more products than you probably realize. Any application that requires a shaft rotation in precise predictable increments without close-loop control and at relatively low speeds is a potential candidate for a stepper. Here is a list of just a few products that use steppers.

- Robots
- Factory automation motion control
- CNC machine tools (mill, drill, etc.)
- Printers, conventional
- Scanners
- 3D printers
- Thermal printers
- Laser cutters
- Surveillance cameras
- XY plotter
- Office machines (copiers)
- Gaming machines (slots)
- ATM machines
- Vending Machines
- Actuators
- Valve control

# Stepper Motor Tutorial

Steppers rotate an output shaft one angular increment at a time. Typical step increments are 30, 15, 7.5, 5, 2.5 and 1.8 degrees. **Fig. 1** illustrates the basic concepts of how the stepper operates.

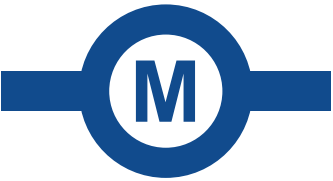


**Figure 1** Hypothetical concept stepper to illustrate basic operation.

The motor is made up of a fixed magnetic stator with four poles that are wound with wire to produce multiple electromagnet coils. The direction of the coil windings or the direction of the current flow designates whether the pole magnet is energized to produce a north (N) or south (S) magnetic polarity. The coils of the opposing stator poles work together to form a phase. Poles A and C form one phase while poles B and D form another. The rotor is the gear-like device that is mounted on the motor output shaft. It is a permanent magnet with six rotor poles that are pre-magnetized with alternating N and S polarities.

To make the rotor rotate, sequences of DC pulses generated by an electronic controller are applied to the stator windings by the MOSFET switches Q1 – Q4. The resulting magnetic interaction between the PM rotor and the electromagnetic stator poles results in a step-by-step rotation. The rate (frequency) of the pulses determines the shaft speed. The number of rotor poles and stator poles determines the step increment.

With the arrangement shown in **Fig. 1**, the step increment is 30 degrees. Real steppers have more poles to implement smaller step angles. Typical motors are available to produce step angles of 30, 15, 10, 7.5, 5, 2.5, and 1.8 degrees. Even smaller increments such as 0.9 degree are available. A popular choice is a 1.8-degree stepper. It takes 200 steps to make a full 360-degree rotation

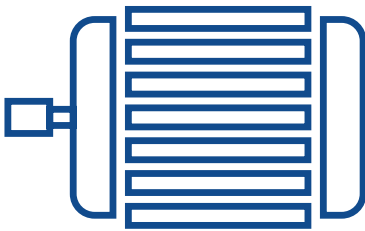


The rotor in **Fig. 1** is hypothetical. The actual construction of a hybrid rotor is typically in cylindrical form made up of N and S pole segments. A second rotor cylinder is mounted adjacent to the first cylinder on the same shaft. Its magnets are offset from those on the first cylinder. This offset determines the minimal step angle of the motor. Specially shaped stator poles interact with the rotor magnets to produce stepping action. Actual rotor design is usually proprietary with the manufacturer.

## Stepper Control

Stepper controllers are the circuits that drive the stator coils. These coils are organized in groups called "phases." By energizing each phase in sequence, the motor will rotate, one step at a time. With computer-controlled stepping, you can achieve very precise positioning and/or speed control.

Hybrid steppers are two-phase motors. The stator coils are energized in sequence to produce each step. There are two ways to apply power to stator windings: bipolar and unipolar.




**Bipolar Control.** In this method, the stator coils become magnetized in either the N or S direction by controlling the direction of current flow in the coil. This is usually accomplished with an H-bridge (See sidebar). By turning the MOSFETs on or off in the correct pattern, the direction of current can be changed, thereby determining the N or S condition of the stator pole.

**Unipolar Control.** Unipolar control also uses two phases, but the stator coils are center tapped; +DC is usually tied to the center tap. One end of the coil can be connected to ground through a control transistor, thereby establishing the direction of current flow and the N and S poles. The other end of the coil is not connected or left open. But its end of the magnetic core becomes the opposite polarity of the other end.

Alternately, the other end of the phase coil will be grounded, and the other end left open. This reversed the magnetic polarity. The state of MOSFET switches determines which end of the coil gets grounded.

Unipolar stepper motors require two switches per phase as opposed to bipolar stepper motors, but the torque is also reduced by half. As a result, unipolar stepper motors represent the history of the past.



Stepper controllers are the circuits that drive the stator coils. These coils are organized in groups called "phases!"

**Stepping Modes.** The standard mode is called full step. Pulses are applied to the coils sequentially, and the motor steps in its design increments. The pulses are such that only one phase at a time is enabled. Another arrangement is to apply the pulses such that they overlap, meaning that the coils are energized at the same time. The rotor then aligns itself half way between two coils. The result is a half-step that provides increased angular resolution. If a normal step is 1.8 degrees, the half step mode provides a 0.9-degree increment of rotation.

## Stepper Motor Controllers/Drivers

Steppers require very special signals that make the stepper rotate. These are a sequence of pulses applied to the phase coils. The timing and sequencing are critical and must match the specific motor's requirements. A stepper controller IC is designed to provide the mix of signals needed to operate the motor. A driver is also usually needed because the controller IC cannot supply the high phase current needed in some applications. External power transistors are needed.

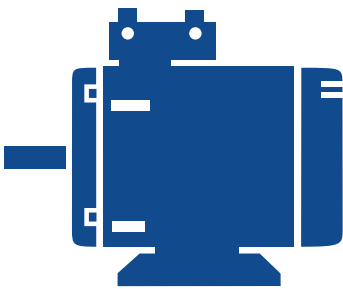
There are two basic ways to control steppers: a microcontroller or a special IC called a stepper motor controller/driver. Some products can be built with a specially programmed microcontroller whose outputs operate discrete external components (MOSFETs). Software and programming experience are required.

The alternate approach is to use a commercial IC product designed for stepper control. Using such a chip greatly simplifies stepper equipment design and time to market. Those controller ICs implement many beneficial control features. Some products require external components like MOSFET drivers. Some low power stepper controllers package the high-power drivers directly on-chip.

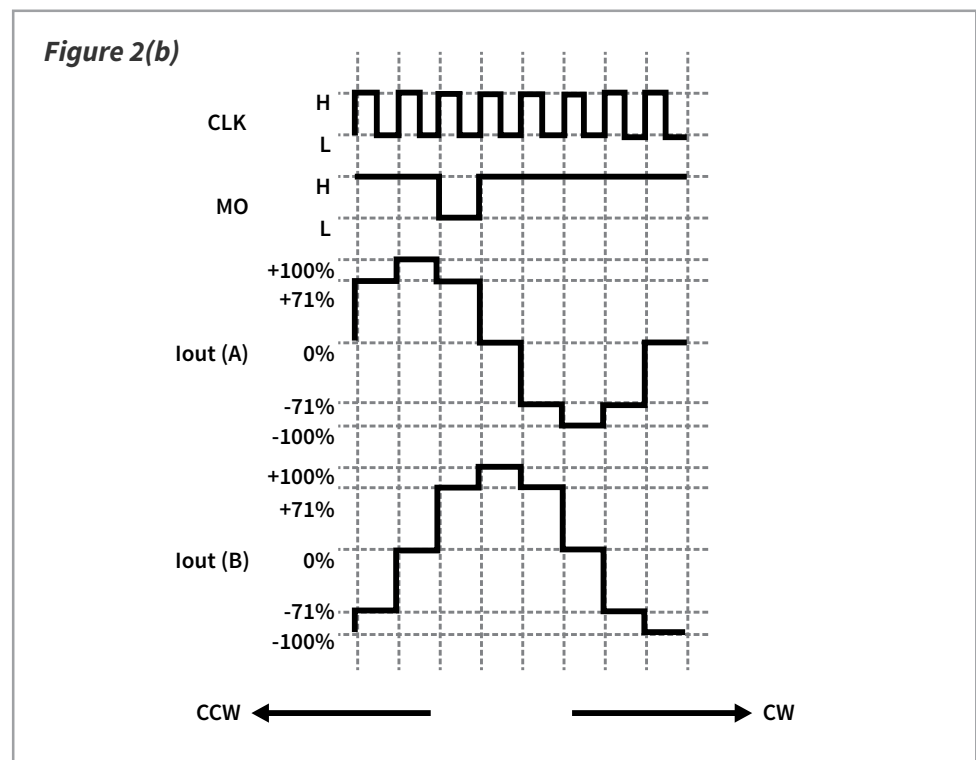
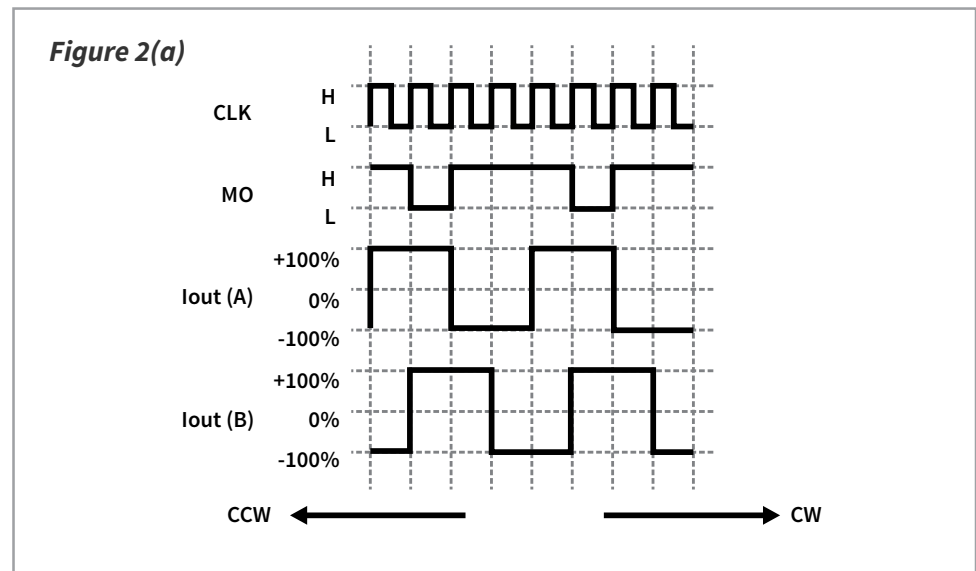
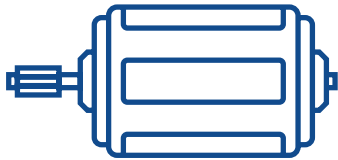
Most new products today contain a central embedded microcontroller (MCU). It is tempting to let that processor do the stepper controlling, as well. It may make sense in some designs for simple applications where a minimum of programming is needed. Other designs may require extensive programming extending the design time and cost. In such cases you should seriously consider a controller IC that will easily interface with an existing microcontroller. It might even provide new desirable features that can distinguish your product from others.

## Modern "Smart" IC Controllers

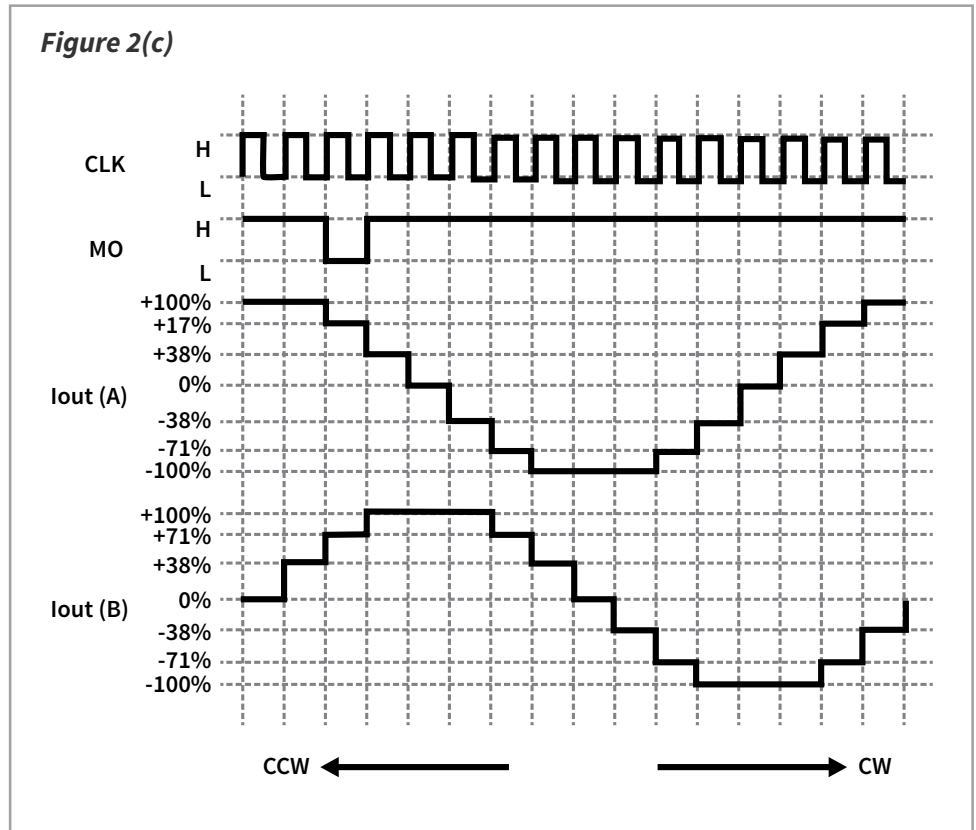
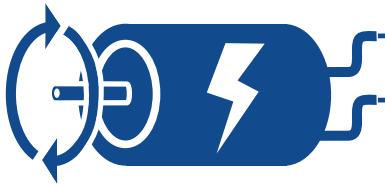
This paper describes some recently introduced stepper controllers and drivers from Toshiba that offer some sophisticated features that provide unique benefits that constitute "smart" control.



The TB67S128FTG is a two-phase bipolar stepper controller designed to operate one motor. It features pulse width modulation (PWM) for control. The motor controller can provide full-, half-, and quarter-step operations. Microstepping modes can implement division factors of 8, 16, 32, 64, and 128. **Fig. 2a** shows the phase drive pulses for standard full-step operation. For half-step operations, multiple voltage steps are applied, as in **Fig. 2b**. For finer angle increments such as quarter-stepping, the phase pulses are faster, and more pulses are applied. The phase voltages are phase-shifted stepped sinusoids. See **Fig. 2c**.







**Figure 2** Examples of the phase pulses A and B generated by the controller chip for full step (a), half step (b) and quarter step (c). MO is a chip monitor/control signal. The percentages shown indicate the percentage of the total available phase current used by each step.

**Some typical specifications for this device are:**

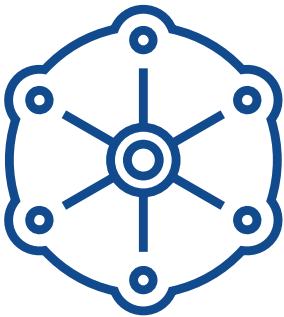
- Maximum motor output voltage: 50V
- Maximum motor output current: 5A
- Internal logic voltage: 5V
- Internal clock oscillator frequency: 1 MHz to 25 MHz
- Power dissipation: 1.2 W
- Operating temperature range: -40° to +85°C
- Package: P-VQFN64

**Some major benefits of the TB67S128FTG are:**

- A thermal shutdown function (TSD) that shuts off the outputs at a nominal 160°C +
- Over current detection (ISD) with a typical threshold of 7.2A
- Power on reset (POR) will turn the outputs on when the excess conditions end
- Open motor load sensing (OMD)
- A consolidated error detection output (TSD/ISD/OPD)
- Under voltage lock out (UVLO)

## Toshiba stepper controller/drivers offer some unique benefits not found in competitive devices.

Toshiba stepper controller/drivers offer some unique benefits not found in competitive devices. One of these is the Active Gain Control (AGC). The AGC benefit monitors and adjusts motor drive current according to the motor's load torque. It optimizes the motor current based upon the torque needed. This ability prevents stalling and reduces motor current to decrease heat in the motor and the controller, thereby improving overall efficiency. The [data sheet](#) has more detail.



One more key feature is the Advanced Current Detect System (ACDS) that monitors the motor current without an external sense resistor. This reduces PCB layout and reduces the BOM.

The Toshiba line of stepper drivers includes additional similar devices that feature AGC. These are the TB67S249FTG, TB67S289FTG, and TB67S279FTG. These lower power drivers have maximum current ratings of 4.5A, 3.0A, and 2.0A, respectively. They are pin-to-pin compatible and are rated at 50V. The package is a 7mm x 7mm QFN48.

In addition to the unique AGC and ACDS capability, these ICs greatly reduce power consumption. Other features are the built-in error detection functions such as thermal shut down, over-current protection, under-voltage lock-out, and motor-load open detection and an error-detection output flag.

A special case in this series is the TB67S285FTG. This driver is similar to the others but features a 3-wire serial interface for external control.

**The Flexible H-Bridge** One of the factors to be controlled in some applications is direction of rotation of the motor shaft. That is generally achieved by simply reversing the current direction in the motor coils. The fact is, this is harder to do than you think. Special circuits are often required. One superior method of reversing the current in a motor is to use an H-bridge. This is a bridge circuit made with semiconductor switches arranged in an H configuration. Fig. 3 shows the typical arrangement.

The bridge is made up of MOSFET switches. DC voltage is applied to the bridge as shown. The motor (M) is connected across the bridge. Control logic is used to turn the MOSFETs off or on. If Q1 and Q4 are turned on, electron current flow will be through Q4, then the motor from right to left and through Q1. Q2 and Q3 are off at this time.

To reverse the current flow through the motor, Q1 and Q4 are turned off, and Q2 and Q3 are turned on by the controller. Electron flow is then through Q2, the motor (M) from left to right, and Q3.

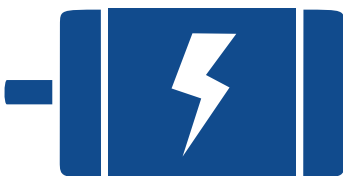
While the H-bridge is mainly used to control motor direction of rotation, it can be used for other functions. Stepper motor pulses can be applied via the H-bridge. Or pulse width modulation (PWM) pulses may be applied for speed control in brushed motors.

## A Dual H-Bridge Driver

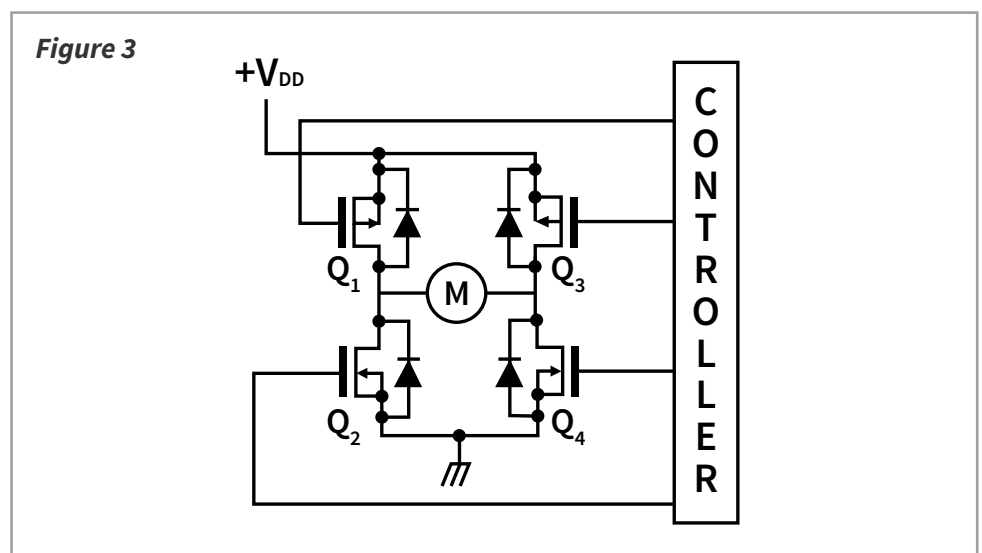
Another new IC for stepper motor use is the Toshiba TC78H653FTG dual H-bridge driver. This MOSFET driver targets low-voltage applications such as battery-operated and mobile devices. Examples include cameras, printers, electronic locks, smart meters, and toys.

This latest chip is specifically designed to operate at low voltage (1.8 volts) and high current (4 A). Its very low “on” resistance improves motor torque since more voltage gets to the motor and greatly minimizes losses and heat dissipation. This chip contains two MOSFET H-Bridge drivers similar to those shown in **Fig. 3**. It is capable of driving a single two-phase stepper or two brushed motors. Some highlights of this IC include:

- DC operating voltage range: 1.8 to 7.5V
- Stepping output current: 2A
- Typical output “on” resistance: 0.11 ohms
- Available protection modes of thermal shutdown (TSD), over-current detection (ISD) and under-voltage lockout (UVLO)
- Selectable modes: Forward, Reverse, Stop, and Brake
- Can also drive two brushed DC motors
- Package: P-VQFN16 (3 mm x 3 mm)



For more details, [view the data sheet and application note.](#)



**Figure 3** The popular H-bridge used for controlling the direction of current flow in a brushed motor (M) or in a two-phase stepper.

## EBV EUROPEAN HEADQUARTERS

EBV Elektronik GmbH & Co. KG | DE-85586 Poing | Im Technologiepark 2-8 | Phone: +49 8121 774 0 | www.ebv.com

## EBV REGIONAL OFFICES | Status October 2019

### AUSTRIA

1120 Wien  
Grünbergstraße 15 / Stiege 1  
Phone: +43 1 89152 0  
Fax: +43 1 89152 30

30938 Burgwedel  
Burgdorfer Straße 2  
Phone: +49 5139 8087 0  
Fax: +49 5139 8087 70

### BELGIUM

1831 Diegem  
De Kleetlaan 3  
Phone: +32 2 716001 0  
Fax: +32 2 72081 52

59439 Holzwickedde  
Wilhelmstraße 1  
Phone: +49 2301 94390 0  
Fax: +49 2301 94390 30

### BULGARIA

1505 Sofia  
48 Sitnyakovo Blvd., Serdika  
offices, 10<sup>th</sup> floor, Unit 1006  
Phone: +359 2 9264 337  
Fax: +359 2 9264 133

41564 Kaarst  
An der Gumpfesbrücke 7  
Phone: +49 2131 9677 0  
Fax: +49 2131 9677 30

### CZECH REPUBLIC

18600 Prague  
Amazon Court, Karolinska 661/4  
Phone: +420 2 34091 011  
Fax: +420 2 34091 010

71229 Leonberg  
Neue Ramtelstraße 4  
Phone: +49 7152 3009 0  
Fax: +49 7152 759 58

### DENMARK

8230 Åbyhøj  
Ved Lunden 10-12, 1. sal  
Phone: +45 8 6250 466  
Fax: +45 8 6250 660

90471 Nürnberg  
Lina-Ammon-Straße 19B  
Phone: +49 911 817669 0  
Fax: +49 911 817669 20

### ESTONIA

10414 Tallinn  
Niine 11  
Phone: +372 62 5799 0  
Fax: +372 62 5799 5

04435 Schkeuditz  
Frankfurter Straße 2  
Phone: +49 34204 4511 0  
Fax: +49 34204 4511 99

### FINLAND

02240 Espoo  
Pihatörmä 1 a  
Phone: +358 9 2705279 0  
Fax: +358 9 2705498

78048 VS-Villingen  
Marie-Curie-Straße 14  
Phone: +49 7721 99857 0  
Fax: +49 7721 99857 70

### FRANCE

92160 Antony Cedex (Paris)  
2-6 Place Du General De Gaulle -  
CS70046  
Phone: +33 1 409630 00  
Fax: +33 1 409630 30

65205 Wiesbaden  
Borsigstraße 36  
Phone: +49 6122 8088 0  
Fax: +49 6122 8088 99

### FRANCE

35510 Cesson Sévigné (Rennes)  
35, av. des Peupliers  
Phone: +33 2 998300 51  
Fax: +33 2 998300 60

### HUNGARY

1117 Budapest  
Budafoki út 91-93, West Irodaház  
Phone: +36 1 43672 29  
Fax: +36 1 43672 20

67400 Illkirch Graffenstaden  
35 Rue Gruninger  
Phone: +33 3 904005 92  
Fax: +33 3 886511 25

### IRELAND

Dublin 12  
Calmount Business Park  
Unit 7, Block C  
Phone: +353 1 40978 02  
Fax: +353 1 45685 44

31500 Toulouse  
8 chemin de la terrasse  
Parc de la plaine  
Phone: +33 5 610084 61  
Fax: +33 5 610084 74

### ISRAEL

4581500 Bnei Dror  
Tirosh 1  
Phone: +972 9 77802 60  
Fax: +972 3 76011 15

69693 Venissieux (Lyon)  
Parc Club du Moulin à Vent  
33, Av. du Dr. Georges Lévy  
Phone: +33 4 727802 78  
Fax: +33 4 780080 81

### ITALY

20095 Cusano Milanino (MI)  
Via Alessandro Manzoni, 44  
Phone: +39 02 660962 90  
Fax: +39 02 660170 20

### GERMANY

85609 Aschheim-Dornach  
Einsteinring 1  
Phone: +49 89 388 882 0  
Fax: +49 89 388 882 020

50019 Sesto Fiorentino (FI)  
Via Lucchese, 84/B  
Phone: +39 05 543693 07  
Fax: +39 05 542652 40

10587 Berlin  
Englische Straße 28  
Phone: +49 30 747005 0  
Fax: +49 30 747005 55

41126 Modena (MO)  
Via Scaglia Est, 33  
Phone: +39 059 292 4211  
Fax: +39 059 292 9486

00139 Roma (RM)  
Via de Settebagni, 390  
Phone: +39 06 4063 665/789  
Fax: +39 06 4063 777

35030 Sarmedola di Rubano (PD)  
Piazza Adelaide Lonigo, 8/11  
Phone: +39 049 89747 01  
Fax: +39 049 89747 26

10144 Torino (TO)  
Via Treviso, 16  
Phone: +39 011 26256 90  
Fax: +39 011 26256 91

### NETHERLANDS

3606 AK Maarssenbroek  
Planetenbaan 116  
Phone: +31 346 5830 10  
Fax: +31 346 5830 25

### NORWAY

3440 Røyken  
Kleiverveien 35  
Phone: +47 22 67 17 80  
Fax: +47 22 67 17 89

### POLAND

80-838 Gdansk  
Targ Rybny 11/12  
Phone: +48 58 30781 00

P02-676 Warszawa  
Postepu 14  
Phone: +48 22 209 88 05

50-062 Wrocław  
Pl. Solny 16  
Phone: +48 71 34229 44  
Fax: +48 71 34229 10

### PORTUGAL

4400-676 Vila Nova de Gaia  
Unipessoal LDA / Edifício Tower Plaza  
Rotunda Eng. Edgar Cardoso, 23 - 14ºG  
Phone: +351 22 092026 0  
Fax: +351 22 092026 1

### ROMANIA

020334 Bucharest  
4C Gara Herastrau Street  
Building B, 2<sup>nd</sup> Floor - 2<sup>nd</sup> District  
Phone: +40 21 52816 12  
Fax: +40 21 52816 01

### RUSSIA

620028 Ekaterinburg  
Tatischeva Street 49A  
Phone: +7 343 31140 4  
Fax: +7 343 31140 46

127486 Moscow  
Korovinskoye Shosse 10,  
Build 2, Off. 28  
Phone: +7 495 730317 0  
Fax: +7 495 730317 1

197374 St. Petersburg  
Atlantic City, Savushkina str 126,  
lit B, premises59-H, office 17-2  
Phone: +7 812 635706 3  
Fax: +7 812 635706 4

### SERBIA

11070 Novi Beograd  
Milentija Popovica 5B  
Phone: +381 11 40499 01  
Fax: +381 11 40499 00

### SLOVAKIA

82109 Bratislava  
Turčianska 2 Green Point Offices  
Phone: +421 2 3211114 1  
Fax: +421 2 3211114 0

### SLOVENIA

1000 Ljubljana  
Dunajska cesta 167  
Phone: +386 1 5609 778  
Fax: +386 1 5609 877

### SOUTH AFRICA

7700 Rondebosch, Cape Town  
Belmont Office Park, Belmont Road  
1<sup>st</sup> Floor, Unit 0030  
Phone: +27 21 402194 0  
Fax: +27 21 4196256

3629 Westville  
Forest Square, 11 Derby Place  
Suite 4, Bauhinia Building  
Phone: +27 31 27926 00  
Fax: +27 31 27926 24

2128 Rivonia, Sandton  
Johannesburg  
33 Riley Road  
Pinewood Office Park  
Building 13, Ground Floor  
Phone: +27 11 23619 00  
Fax: +27 11 23619 13

### SPAIN

08014 Barcelona  
c/Tarragona 149 - 157 Planta 19 1º  
Phone: +34 93 47332 00  
Fax: +34 93 47363 89

39005 Santander (Cantabria)  
Racing nº 5 bajo  
Phone: +34 94 22367 55  
Phone: +34 94 23745 81

28760 Tres Cantos (Madrid)  
c/Ronda de Poniente 14 - 2ª planta  
Phone: +34 91 80432 56  
Fax: +34 91 80441 03

### SWEDEN

16440 Kista  
Isafjordsgatan 32B, Floor 6  
Phone: +46 859 47023 0  
Fax: +46 859 47023 1

### SWITZERLAND

8953 Dietikon  
Bernstrasse 394  
Phone: +41 44 74561 61  
Fax: +41 44 74561 00

### TURKEY

06520 Ankara  
Armada Is Merkezi  
Eskisehir Yolu No: 6, Kat: 14  
Ofis No: 1406, Sogutozu  
Phone: +90 312 2956 361  
Fax: +90 216 528831 1

34774 Ümraniye / Istanbul  
Tatlısu Mahallesi Pakdil Sokak 7  
Phone: +90 216 528831 0  
Fax: +90 216 528831 1

35580 Izmir  
Folkart Towers  
Manas Blv. No 39 B Blok  
Kat: 31 Ofis: 3121  
Phone: +90 232 390 9196  
Fax: +90 218 528831 1

### UKRAINE

03040 Kiev  
Vasilovskaya str. 14  
off. 422-423  
Phone: +380 44 496222 6  
Fax: +380 44 496222 7

### UNITED KINGDOM

Maidenhead (South)  
Berkshire, SL6 7RJ  
2, The Switchback  
Gardner Road  
Phone: +44 16 28778556  
Fax: +44 16 28783811

Manchester (North)  
M22 5WB  
Manchester International Office Centre  
Suite 3E (MIOC) Styal Road  
Phone: +44 16 149934 34  
Fax: +44 16 149934 74

