

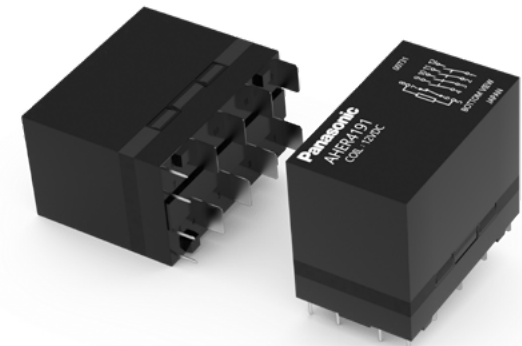
IN Your Future

40A Power Relay

HE-R Series

40A PCB relay for 3 phase systems with feedback contact

HE-R relay is the first printed relay which can be used as the main switching element in 3 phase systems. Due to its compact size, it enables the customer to bring the switching function on PCB. This contributes to considerable space & cost savings. Each of the 4 NO contacts is able to switch 40A up to an ambient temperature of +85°C - also a result of the sophisticated thermal design and an unique low coil holding power. An optional NC contact as feedback contact can handle low level loads down to 10mA / 5VDC. The IEC62955 compliant HE-R relay is a perfect option for demanding wallbox designs.



Key Features

- Unique contact arrangement of 4a or 4a1b
- 1xNC contact as a mirror contact
- Contact rating 40A / 480VAC resistive
- Extreme low coil holding power of 490mW
- Clearance & creepage distance > 8.0 mm
- Ambient temperature - 40°C to +85°C
- PCB soldering terminal type
- UL/C-UL, VDE certified



EV Charging

- AC/DC wallbox
- AC charging station
- DC charging station




Industrial Automation

- Industrial motor control
- Inverters
- Servo drives



Renewable Energy

- Photovoltaic
- Wind energy
- Fuel cells

 For further information, please contact relays@eu.panasonic.com

Panasonic
INDUSTRY

Your Committed Enabler