



LIGHTWEIGHT CABLE ASSEMBLIES FOR VIRTUAL REALITY

Our cable assemblies for virtual reality (VR) applications enable you to get to market faster with a standard, platform design that can be easily and quickly modified to fit your needs. We can provide the entire cable assembly and high speed receptacle, or just the plug modules if you source your cable from another supplier. The solution is up to you.

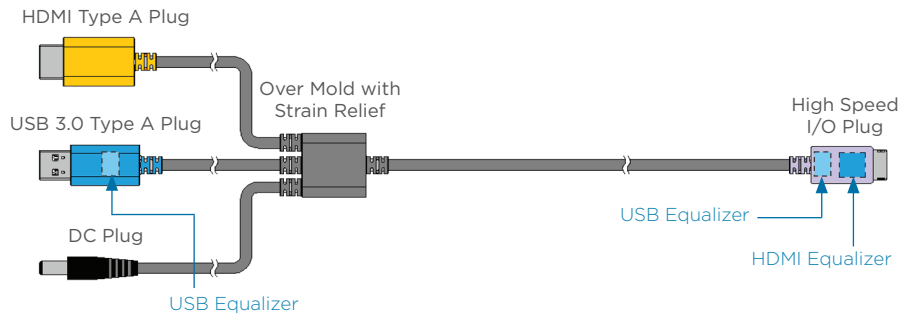
The low-profile receptacle saves valuable PCB space in the headset, while the use of equalizers within the connectors on the cable assembly extend the reach of thin cable, keeping cable weight low.

Key Markets:

- Gaming
- Medical
- Industrial

CABLE ASSEMBLIES FOR VIRTUAL REALITY

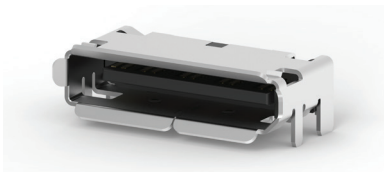
Standard Cable Assembly Solution



Key Features:

- Supports long distances up to 4 meters
- Light weight bundled cable - only 5.0mm OD
- Bandwidth - 5 Gbps (USB 3.0) 3.4 Gbps (HDMI 1.4)
- Programmable equalizers for the best performance
- EMI protected High Speed I/O HDR
- Optional DC plug for additional power (up to 1.5A)
- Customization is available. Contact your TE representative to learn more

Low Profile, High Speed Receptacle



Key Features:

- Small footprint (5.8mm depth) and lowest height (3.06mm) saves space
- Superior signal integrity performance
- Enhanced GND contacts
- EMI protection plate

Standard Part Number Information

PART NUMBER	DESCRIPTION
2324673-1	Cable Assembly with Equalizers and High Speed Plug
2312625-3	Low Profile, High Speed Receptacle

Why TE?

Speed to Market

- Standard, platform design can be quickly modified to fit your needs
- We offer the the entire cable assembly and high speed receptacle, or just the plug modules

Compact and Light

- Low profile receptacle saves valuable PCB space in the VR headset
- Use of equalizers within the connectors extend the reach of thin cable, keeping cable weight low

Superior Performance

- Design specifically for VR applications and are proven to transmit signal without interruption
- Our engineering expertise and in-depth application knowledge is extensive - we can work with you to design custom solutions while leveraging common components to minimize cost

High Data Rates

- Uses HDMI 1.4 connector, USB 3.0 connector and an optional DC power supply
- Supports speeds up to 8 Gbps
- High speed I/O receptacle can support even higher data rates (up to 40 Gbps), making future upgrades easy

For More Information

TE Technical Support Center

USA:	1.800.522.6752
Canada:	1 .905.475.6222
Mexico:	52.0.55.1106.0800
Latin/S. America:	54.0.11.4733.2200
Germany:	49.0.6251.133.1999
UK:	44.0.800.267666
France:	33.0.1.3420.8686
Netherlands:	31.0.73.6246.999
China:	86.0.400.820.6015

© 2017 TE Connectivity Ltd. family of companies. All Rights Reserved.

TE Connectivity, TE and TE Connectivity (logo) are trademarks. All other logos, products and/or company names referred to herein might be trademarks of their respective owners.

The information given herein, including drawings, illustrations and schematics which are intended for illustration purposes only, is believed to be reliable. However, TE Connectivity makes no warranties as to its accuracy or completeness and disclaims any liability in connection with its use. TE Connectivity's obligations shall only be as set forth in TE Connectivity's Standard Terms and Conditions of Sale for this product and in no case will TE Connectivity be liable for any incidental, indirect or consequential damages arising out of the sale, resale, use or misuse of the product. Users of TE Connectivity products should make their own evaluation to determine the suitability of each such product for the specific application.

1-1773939-8 10/17 DND