

# Easy-On FFC/FPC One-Touch Connectors, 200485 Series

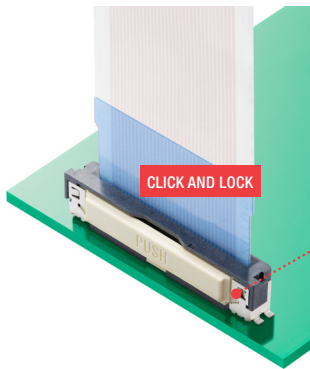
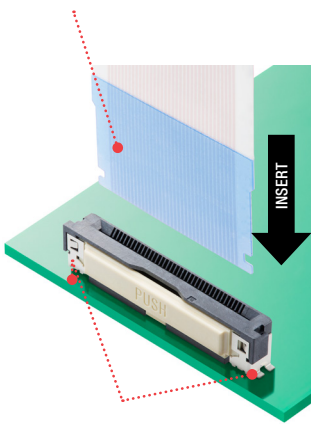
**molex**

Easy-On FFC/FPC One-Touch Connectors feature single-step mating with an auto lock-nail mechanism and high-retention force a for quick and reliable connection and easy operation, making these connectors ideal for many industries

## Features and Advantages

### One-touch insertion operation

A wide FFC/FPC mouth helps in easy insertion and auto-lock assembly line benefits the customer manufacturing line

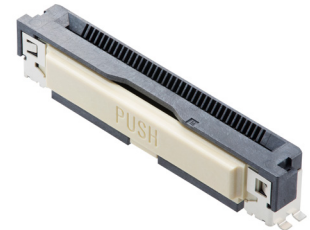


### Operates at a temperature of up to 125°C

Meets a wide range of application needs



Right-Angle version



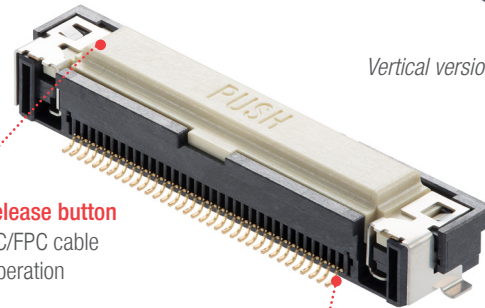
Vertical version

### Visible release button

Eases FFC/FPC cable release operation

### Ground Terminal (optional)

Provides superior signal integrity



### Lock-nail system

Ensures FFC/FPC cable connection by high retention force

Easy-On, One-Touch Right-Angle Connector shown  
(Same features applicable on vertical connector)

### Selective gold plating on signal terminal

Prevents solder wicking for the SMT solder tail

## Markets and Applications

### Connected Home / Home Appliance

- Smart appliances
- Smart connected appliances
- Vending machines

### Automotive

- Connected mobility
- Comfort and infotainment

### Data/Computing

- Severs / Networking / Storage

### Consumer

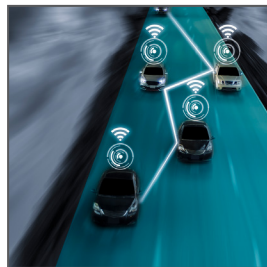
- Home entertainment
- Flat LCD / LED display panels
- Home security

### Industrial

- Connectivity
- Signal

### Industrial Automation

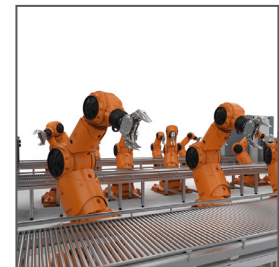
- Automotive assembly line



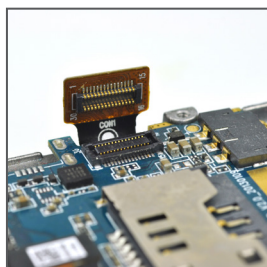
Connected Mobility



Car IoT Infotainment



Assembly Automation



PCB Servers



Smart Appliances



LED (OLED) displays

# Easy-On FFC/FPC One-Touch Connectors, 200485 Series



## Specifications

### REFERENCE INFORMATION

Packaging: Embossed  
 UL File No.: UL94V-0  
 Mates With: FFC/FPC  
 Designed In: Millimeters  
 RoHS: Yes  
 Halogen Free: Low halogen

### ELECTRICAL

Voltage (max.): 50V  
 Current (max.): 0.5A  
 Contact Resistance (max.): 40 milliohms  
 Dielectric Withstanding Voltage: 125V AC  
 Insulation Resistance (min.): 50 Megohms

### MECHANICAL

Durability (min.): 20 cycles

### PHYSICAL

Housing: LCP  
 Button: LCP  
 Contact: Copper Alloy  
 Plating:  
 Signal Contact Area — Gold (Au)  
 Signal Solder Tail Area — Gold (Au)  
 Nail Solder Tail Area — Tin (Sn)  
 Ground Contact Area — Tin (Sn) <option>  
 Ground Solder Tail Area — Tin (Sn) <option>  
 Underplating: Nickel (Ni)  
 FFC/FPC Thickness:  
 0.30 +/-0.05mm (standard without ground)  
 0.33 +/-0.03mm (option with ground)  
 Operating Temperature:  
 -40 to +105°C / -40 to +125°C

## Ordering Information

Part Number	Pitch (mm)	Height (mm)	Current (max.)	Voltage (max.)	Orientation	Contact Position	Ground	Circuit size	Operating Temperature	Plating	Durability
200485-00**	0.50	4.46	0.5A	50V	Right-Angle	Bottom	No	10 to 51	-40 to +125°C	Gold	20 cycles
200485-01**		5.60			Vertical	-					
200485-02**		4.46			Right-Angle	Bottom	Yes				
200485-03**		5.60			Vertical	-					
200485-04**		4.46			Right-Angle	Bottom	No		-40 to +105°C		
200485-05**		5.60			Vertical	-					
200485-06**		4.46			Right-Angle	Bottom	Yes				
200485-07**		5.60			Vertical	-					

\* Replace \*\* with circuit size

[www.molex.com/link/easyon.html](http://www.molex.com/link/easyon.html)

Molex is a registered trademark of Molex, LLC in the United States of America and may be registered in other countries; all other trademarks listed herein belong to their respective owners.