

QSFP-DD 16F Cable Assemblies >

QSFP-DD 16F Cable Assemblies are designed to unleash 16-fiber high-speed capabilities tailored for the future of data centers, networking and a wide array of transceiver applications. These cable assemblies come equipped with jumpers and breakouts, empowering 16F systems to achieve groundbreaking performance with data rates of 400G, 800G and 1TB+.



ADVANTAGES AND FEATURES

Delivers 16-fiber connectivity for high data-rate applications

Design permits use with transceivers in 400G, 800G and 1TB+ applications

Helps ensure reliability and simplified installation with industry-standard MTP and LC connectors

MTP-to-MTP jumpers and MTP-to-LC breakouts are available

Supports high-speed QSFP-DD data transmission rates

16F design transmits up to 28 Gbps NRZ or 56 Gbps PAM-4, with 800 Gbps or higher aggregate

Provides quick and reliable connection

Cable assemblies are fitted with push-pull MTP connector housings

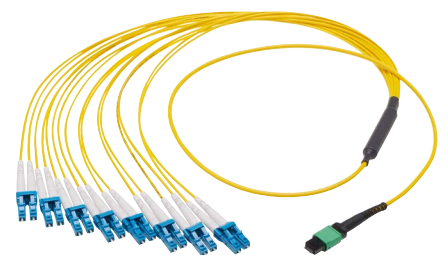
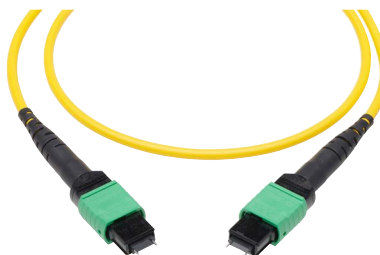
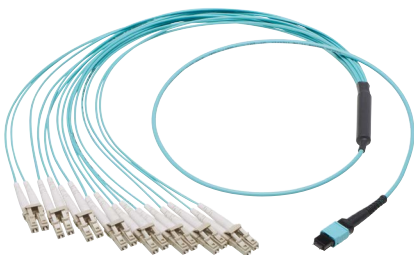
Fiber Types	Single-mode, multi-mode
Fiber Count	16
Connectors	MTP-to-MTP, MTP-to-MDC, MPO-to-MPO, MTP-to-LC
Cable Outside Diameter	3.00mm
Fiber (Core/Cladding)	9/125µm (SM), 50/125µm (MM)
Operating Temperatures	-40 to +70°C

Affords multiple options for increased design flexibility

Cable options include single-mode and multi-mode OM3 or OM4 cable, MTP-to-MTP jumpers and breakouts, and various cable lengths

Offers improved return loss performance with angle-polished connectors (APCs)

SM and MM cable assemblies are available with APCs, while multi-mode cables are also available with ultra-polished connectors (UPCs)



QSFP-DD 16F Cable Assemblies >

APPLICATIONS

Server and Storage

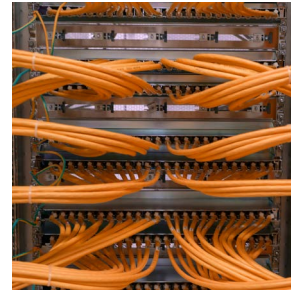
400G/800G/1TB+ systems
Servers
Switches
Routers

Telecommunications

Optical transceivers
Cable distribution and management
Cloud computing



Servers and Storage



Switches

SPECIFICATIONS

Reference Information

Packaging: Individually bagged
Fiber Count: 16
Wire/Cable Types:
 Single-Mode: SM
 Multi-Mode: OM3, OM4 Connector
Types: MTP, MDC, MPO, LC
Designed in: Millimeters RoHS: Yes
Halogen Free: Yes
 LSZH (Low Smoke Zero Halogen)
 or OFNP (Plenum)

Optical

Connector Insertion Loss (IL):
 Single-Mode: 0.75 dB
 Multi-Mode: 0.35 dB
Connector Return Loss (RL):
 Single-Mode: 55 dB (max.)
 Multi-Mode: 25 dB (max.)
Low Loss Insertion Loss: 0.35 to 0.5 dB
Low Loss Return Loss:
 Multi-Mode Flat Polish: 20 dB (max.)
 Multi-Mode APC: 20 dB (max.)
 Single-Mode APC: 50 dB (max.)

Physical

Connector Housings:
 Single-Mode: Green APC
 Multi-Mode: Aqua UPC or Green APC
Boot Type: Straight
Cable Lengths:
 Jumpers: 1.0 to 15.0m
 Breakouts: 1.0m
Fiber Core Diameter: 9 μ m (SM) or 50 μ m (MM)
Fiber Cladding Diameter: 125 μ m
Cable Outside Diameter: 3.00mm
Operating Temperatures: -40 to +70°C

www.molex.com