

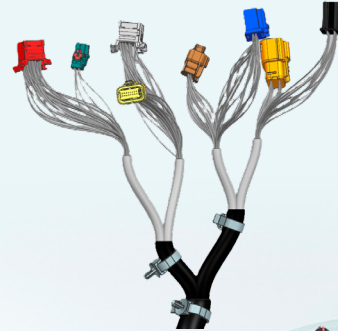
MX-DaSH

A new approach to optimizing the vehicle wire harness for weight and cost savings

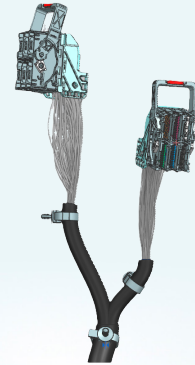
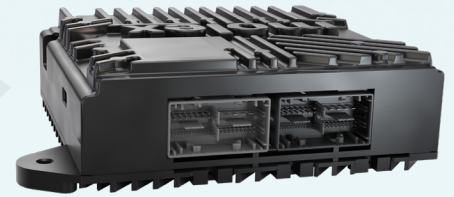


The MX-DaSH data-signal hybrid wire-to-board connector portfolio enables designers to optimize wiring layout and manufacturability by providing flexibility and consolidating multiple connectors into one.

Current Design
8 Connectors

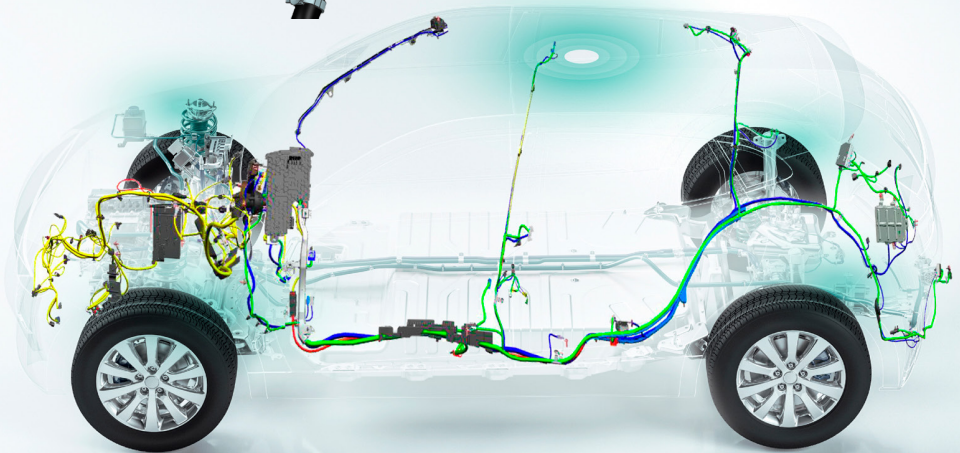


MX-DaSH Design
2 Connectors



DESIGN OPTIMIZATION

Example: Instrument panel
and main body harness



THE BOTTOM LINE

- Reduced harness and hardware complexity
- Eight connectors reduced to two
- 6.0m of copper removed for cost and weight savings
- Fewer nonessential cavity plugs
- Reduced size and footprint of control module
- Harness routing and integration cycle time reduction
- Smaller number of plugging operations, reducing failure modes



Cost Savings in

- Copper reduction
- Harness assembly
- Manufacturing
- Integration
- Components