

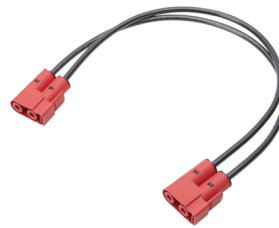
# Off-the-Shelf (OTS) PowerWize Cable Assemblies >

OTS PowerWize Cable Assemblies offer complete design flexibility and unique design features to facilitate both prototyping and global preproduction

## FEATURES AND ADVANTAGES

**Mechanically keyed and color coded with uniquely positioned ribs on header housings and matching slots on receptacles (based on connector color)**

Designed to ensure only like-colored connectors mate; helps prevent mismatching when multiple wire-to-board or wire-to-busbar interconnects are used in the same application



**Positive locking with active latches on receptacles and barbed geometry on headers**

Provides operators tactile and audible feedback during system integration; designed to ensure secure mating; helps prevent cable assemblies from backing off headers due to shock, vibration, or mishandling

**Positive locking with active latches on receptacles and barbed geometry on headers**

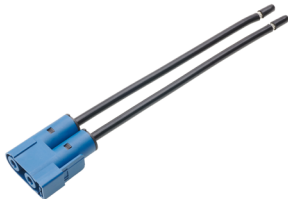
Provides operators tactile and audible feedback during system integration; designed to ensure secure mating; helps prevent cable assemblies from backing off headers due to shock, vibration, or mishandling

**Finger touch-safe receptacles**

Designed per UL 60950 to isolate the crimp contacts and to prevent accidental contact with an energized circuit

**Finger touch-safe headers**

Designed per UL 60950 to isolate the crimp contacts and to prevent accidental contact with an energized circuit



# Off-the-Shelf (OTS) PowerWize Cable Assemblies >

## MARKETS AND APPLICATIONS

### Data Centers

Servers  
Data storage units  
Power distribution units (PDUs)  
UPS/battery storage units  
Enterprise switches  
Circuit breakers  
Routers

### Telecom/Datacom

5G/6G Base Stations  
Servers  
Data storage units  
Power distribution units (PDUs)  
Uninterruptable power supplies (UPSs)  
Digital cross connect switches  
Network routers



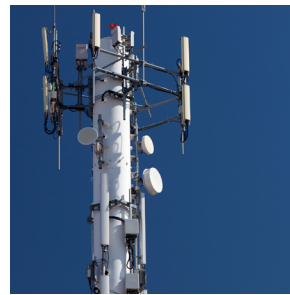
Data Center Server

### Industrial

Factory equipment  
Battery farms  
Robotics

### Test and Measurement

Instrumentation devices



5G/6G Base Station



Factory Equipment

## SPECIFICATIONS

### Reference Information

Packaging: Tray or bag depending on part number; see packaging specifications for details  
UL File No.: E29179  
CSA File No.: LR19980-70184994  
Use With: Printed circuit boards and busbars  
Designed In: Millimeters  
RoHS: Yes

### Physical

Receptacle Housing: PBT  
Header Housing: PBT  
TPA Retainer: PBT  
Contact: High-performance Copper (Cu) Alloy  
Plating:  
  Socket contact area—Gold (Au)  
  Pin—Silver (Ag)  
PCB Thickness (min.): 1.58mm  
Busbar Thickness (min.): 1.50mm  
Operating Temperatures: -40 to +125°C

### Electrical (6.00mm Size)

Voltage (max.): 300V  
Current (max.): 120.0A  
Contact Resistance (max.): 0.25 milliohms

### Mechanical (6.00mm Size)

Whole Connector Mating Force (max.): 75N  
Whole Connector Unmating Force (min.): 10N  
Durability (min.): 200 mating cycles

## ORDERING INFORMATION

Series	Component	Type	Circuits	Pitch (mm)	Length (M)
221960	PowerWize Cable Assemblies	R-R, R-S	2	6.00	1

[www.molex.com/link/otscableassemblies.html](http://www.molex.com/link/otscableassemblies.html)