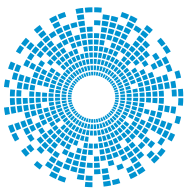




# Power Solutions for Broadcasting



**bel** POWER  
SOLUTIONS &  
PROTECTION

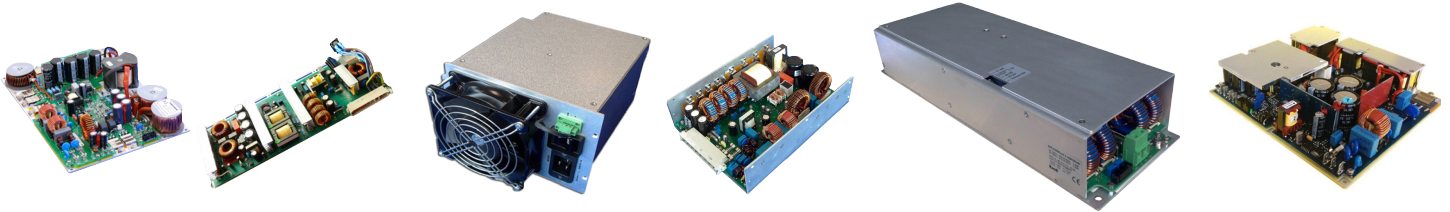
a bel group

[belpowersolutions.com](http://belpowersolutions.com)

## BPEU Series

The BPEU Series of AC-DC Converters is available with single, dual or multiple outputs and an output power from 1300 W up to 3000 W. All models incorporate active Power Factor Correction (PFC). Other standard features include current and voltage monitoring, overvoltage, overtemperature as well as short circuit protection.

The power supplies were designed to power radio-frequency power amplifier (RFPA) applications in the Broadcasting industry.



MODEL	V <sub>IN</sub>	V <sub>OUT</sub>	# OF OUTPUTS	OUTPUT POWER	DIMENSIONS [mm]	PF	EFFICIENCY	COOLING
BPEU2488	90-264 VAC (1P)	50 VDC @ 20 A 28 VDC @ 6 A	2	1300 W	414 x 168 x 38	0.99	90 %	N/A
BPEU2413	185-264 VAC (1P) 175-240 VAC (3P)	2x 50 VDC @ 12 A 50 VDC @ 2 A 4 VDC @ 1.5 A 5 VDC @ 1 A	5	1400 W	260 x 210 x 45	0.99	92 %	Baseplate Air Cooling
BPEU5352	185-264 VAC (1P)	45 VDC @ 31 A 27 VDC @ 8.9 A	2	1700 W	210 x 310 x 53	0.98	90 %	Baseplate Water Cooling
BPEU5452	185-264 VAC (1P) 175-240 VAC (3P)	40-51 VDC @ 40A	1	2000 W	170 x 230 x 60	0.99	92 %	N/A
BPEU2000	185-264 VAC (1P)	40-50 VDC* @ 40 A 12 VDC @ 0.5 A	2	2000 W	128 x 350 x 72	0.99	90 %	Self-fan Cooling
BPEU2452	185-264 VAC (1P)	48 V @ 40 A 12.5 V @ 1 A	2	2000 W	200 x 210 x 43	0.98	93%	Baseplate Cooling
BPEU2489	185-264 VAC (1P)	+50 V @ 32 A +24 V @ 1.5 A	2	2000 W	188.4 x 132.5 x 195	0.99	85%	N/A
BPEU2451	185-264 VAC (1P)	2x 30-50 VDC* @ 40 A 24 VDC @ 3.5 A	3	3000 W	128 x 350 x 72	0.97	92%	N/A
BPEU3000	185-264 VAC (1P) 170-242 VAC (3P)	4x 50 V @ 23.5 A 48 V @ 2.5 A 5 V @ 0.5 A	6	3000 W	140 x 400 x 73	0.98	88%	N/A
BPEU3003	185-264 VAC (1P) 175-242 VAC (3P)	48 V @ 60 A 48 V @ 2.5 A 24 V @ 1.2 A	3	3000 W	140 x 400 x 73	0.95	90%	Baseplate Air Cooling

\* Adjustable manually by multi-turns trimmer set on board

## Isolated Bricks

The Bel Power Solutions product portfolio offers a wide range of Isolated DC-DC Bricks of standard brick sizes (sixteenth, eighth, quarter) with a range of power density and features that can be used in broadcasting applications.



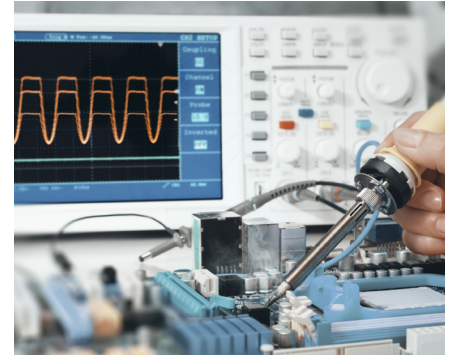
## FXP/FXC Series - Bulk Power Supplies

The Bel Power Solutions FXP/FXC Series is a powerful resource for any company seeking higher power levels to automatic test equipment, telecom, data communications and other distributed power designs.



### Features & Benefits

- Three-phase AC input (180 to 264 V or 342 to 528 V)
- Suitable for 3U or 5U height mounting
- Can be paralleled up to 210 kW
- Single-wire current share or Droop current share
- Remote voltage adjustment and current monitoring
- Overtemperature, overload, and overvoltage protection
- LED supply status indicators
- Current share control for up to 30 units
- Front panel selectable-input-range
- Standard & customized rack adaptors available



## TCP3500 / TXP3500 Series

The TCP3500 / TXP3500 Series of AC-DC converters employ a PFC front end stage and an isolated DC-DC stage to convert world-wide three-phase input voltage to a low DC output voltage. The units include DSP which enables monitoring of electrical parameters and controlling the PSU from the system controller.

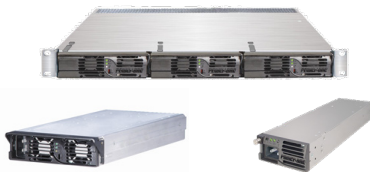
### Features & Benefits

- Typical efficiency up to 94%
- Adjustable output voltage range
- Advanced performance for fast dynamic and pulsed load up to 100 kHz with fast output voltage set response 5 ms (TCP3500)
- Cooling system:
  - Cold-plate cooling -25 to 55°C of case, -25 to 70°C of ambient temperature (TCP3500)
  - Internal fan cooling -20 to 55°C of ambient temperature (TXP3500)
- Possibility to install 4 units in 2U 19" rack
- Parallel operation of up to 16 TCP3500 units or up to 8 TXP3500 units possible
- Serial operation of up to 4 TCP3500 units
- RS485 / CAN Interfaces for monitoring and diagnostic purposes
- Active or Passive current sharing



## FNP/FXP Series

The FNP and FXP Series suite of shelf-mounted AC power devices can be configured up to three units in a 1U rack (FNR-3-48G or FXR-3-48G), to drive up to 5400 W of power. The series are well-suited to aiding a wide variety of telecom, datacom, distributed power and server applications in reducing operating expenses.



### Features & Benefits

- Universal AC and DC inputs
- 600 W to 1800 W of output power
- 1U form factor

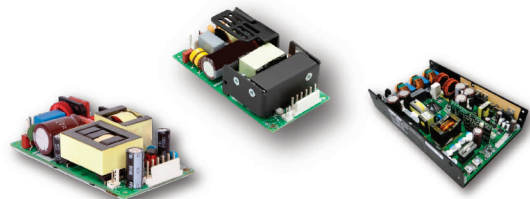
MODEL	OUTPUT POWER	DIMENSIONS [mm]	COMPATIBLE SHELF
FNP600	600 W	298.2 x 85.8 x 40.6	FNR-5-48
FNP1000	1000 W	298.2 x 85.8 x 40.6	FNR-5-48
FNP1500	1500 W	279.4 x 141.2 x 40.5	FNR-3-48G
FNP1800	1800 W	279.4 x 141.2 x 40.5	FNR-3-48G
FXP1500	1500 W	304.8 x 141.2 x 40.5	FXR-3-48G
FXP1800	1800 W	304.8 x 141.2 x 40.5	FXR-3-48G

## ABC/MBC Series

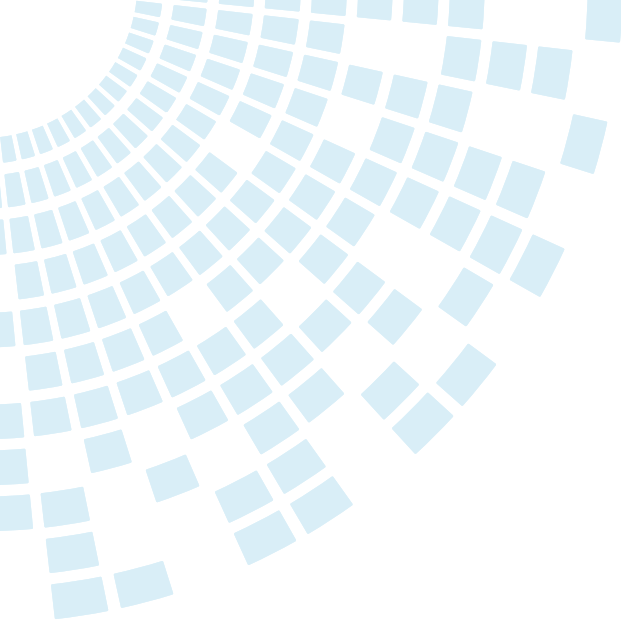
The ABC/MBC series of open-frame power supplies are available in a wide-variety of power levels and output voltages suitable for many broadcasting applications.

### Features & Benefits

- Output power from 40 - 600 W
- Universal input voltage 90 - 264 VAC
- Variety of single and multiple output voltages 3.3 - 58 VDC
- High Convection Rating
- 20°C to +70°C Operation







## About Bel High Power Solutions

Bel Power Solutions offers a wide range of high-power AC-DC products up to 7 kW in a single unit. These products offer single-phase and three-phase inputs to serve a wide variety of industrial, broadcasting and telecom applications.

Bel Power Solutions is certified to both ISO9001 as well as ISO14001.



For more information  
please contact us:

**North America**  
+1 408 785 5200

**Asia-Pacific**  
+86 755 29885888

**Europe, Middle East**  
+353 61 225 977

[belpowersolutions.com](http://belpowersolutions.com)

2390 Walsh Avenue  
Santa Clara, CA 95051 USA