

# 6 Ideal Uses for the CLP Open-Frame Power Supply

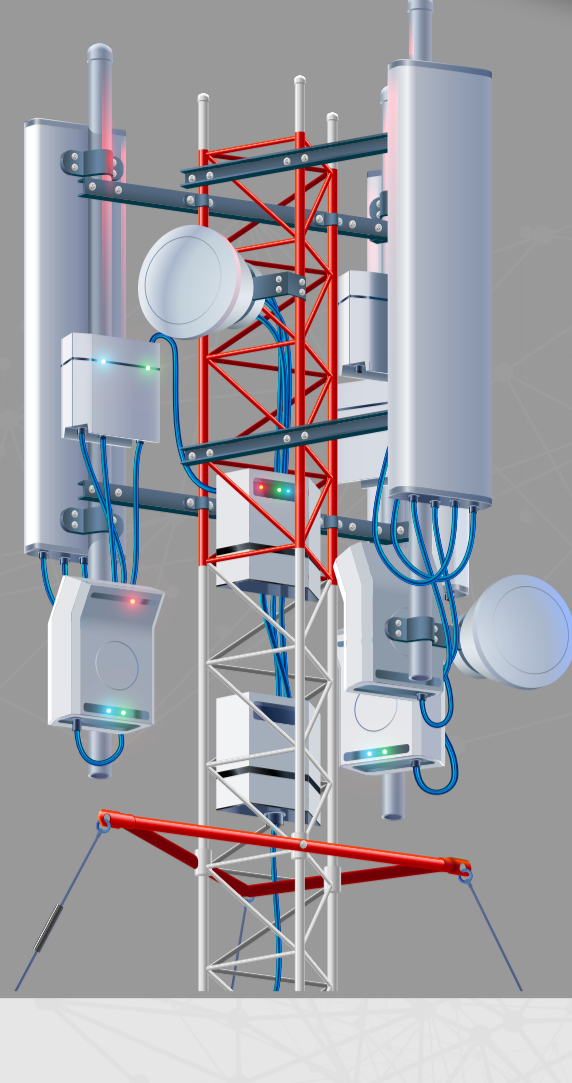


## 1.

### Small Cell/Wireless

A Remote Radio Head (RRH) houses the power amp for the RF antenna and is an important component in small cell architectures. And with the wide-spread implementation of 5G, reliably powering next-gen telecom equipment will be essential.

CLP features a compact footprint and the ability to endure high-temperature operation in an enclosed box, making it an ideal fit for next-gen networks.



## 2.

### Routers & Switches

“Pizza Box” routers and switches are the bread and butter of data center and telecom connectivity.

CLP’s max height of 1.4” is ideally suited for typical 1U (1.62”) tall pizza box routers and switches.

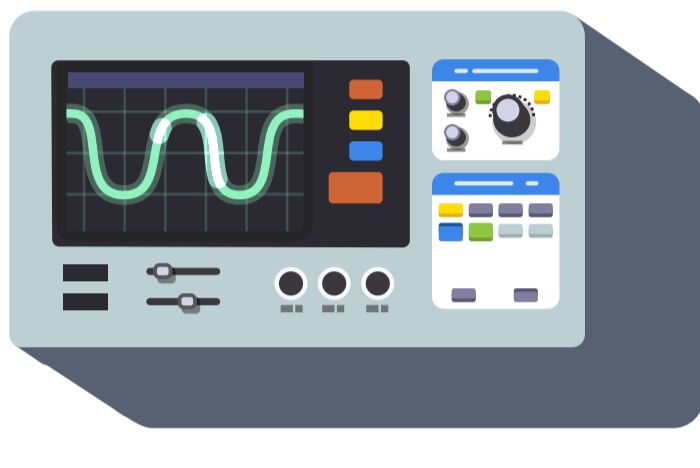


## 3.

### Test & Measurement

Testing and measurement equipment rely on controlled environments with minimal variables to ensure proper operation and accurate data is collected.

The fanless operation of the CLP product family delivers dual advantages for this type of application – no noise and high reliability.



## 4.

### Audio & Broadcasting

Broadcasting high-quality audio and HD or 4K video requires reliable power to be supplied to equipment without interruption.

The CLP’s current sharing capability enables redundancy and load balancing, making it ideal for robust and fault-tolerant architectures.



## 5.

### Vending & ATM Machines

Vending and ATM machines require 24V power supplies to operate actuators, valves and motors.

CLP’s rugged and versatile design, along with its 24V/12V output, make it suitable to power up vending machines.

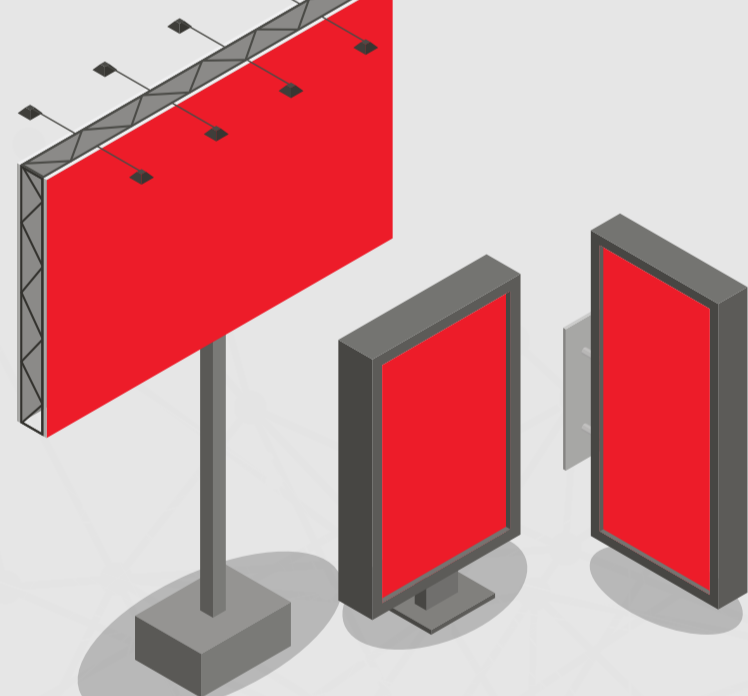


## 6.

### Outdoor Signage

Outdoor installations of power equipment introduce an array of harsh environmental variables that can impact reliable operation.

CLP’s compact size and its ability to work in a sealed enclosure with no air flow required for cooling (thanks to its conduction- and natural convection-cooled design) make it an optimum choice for outdoor advertising, signage and LED displays.



## CLP

POWER MODULES	OUTPUT VOLTAGE	POWER
CLP0112FP	12V	150W
CLP0112-Z02A (conformal coated)	12V	150W
CLP205FP	5V	200W
CLP0212FP	12V	200W
CLP0212DC	12V	200W
CLP0224FP	24V	200W
CLP0224FP-Z02A (short height)	24V	150W
CLP0224FP-Z03A (conformal coated)	24V	200W
CLP0228FP	28V	200W
CLP0248FP-Z02A (PoE+)	54V	200W
CLP0412FP	12V	450W
CLP0412DC	12V	450W
CLP0424FP	24V	450W
CLP0428FP	28V	450W
CLP0448FP-Z01A	48V	450W
CLP0448FP-Z02A (PoE+ feature)	54V	450W
CLP0512FP	12V	550W

### Multiple Output Open Frame

FLP0412FPMX-Z01A (trim pot option for Vout)	12/24/5/3.3V	450W
FLP0412FP4X-Z01A (Vout set by fixed resistor)	12/24/5/3.3V	450W
FLP0412FP3X-Z01A (Vout set by fixed resistor)	12/24/5V	450W
FLP0412FP2X-Z01A (Vout set by fixed resistor)	12/24V	450W

Want to learn more? [Click here to visit our CLP webpage.](#)

