



life.augmented

STM32WBxM Wireless Modules

Bluetooth® LE 5.2,
Zigbee 3.0 and Thread





STM32 MCU portfolio

MPU

STM32MP1
4158 CoreMark
650 MHz Cortex -A7
209 MHz Cortex -M4

High Perf MCUs

STM32F2
Up to 398 CoreMark
120 MHz Cortex-M3

STM32F4
Up to 608 CoreMark
180 MHz Cortex-M4

STM32F7
1082 CoreMark
216 MHz Cortex-M7

STM32H7
Up to 3224 CoreMark
Up to 550 MHz Cortex -M7
240 MHz Cortex -M4

Mainstream MCUs

STM32F0
106 CoreMark
48 MHz Cortex-M0

STM32G0
142 CoreMark
64 MHz Cortex-M0+

STM32F1
177 CoreMark
72 MHz Cortex-M3

STM32F3 ●
245 CoreMark
72 MHz Cortex-M4

STM32G4 ●
550 CoreMark
170 MHz Cortex-M4

Optimized for mixed-signal Applications

Ultra-low Power MCUs

STM32L0
75 CoreMark
32 MHz Cortex-M0+

STM32L1
93 CoreMark
32 MHz Cortex-M3

STM32L4
273 CoreMark
80 MHz Cortex-M4

STM32L4+
409 CoreMark
120 MHz Cortex-M4

STM32L5
443 CoreMark
110 MHz Cortex-M33

STM32U5
651 CoreMark
160 MHz Cortex-M33

Wireless MCUs

STM32WL
162 CoreMark
48 MHz Cortex-M4
48 MHz Cortex-M0+

STM32WB ●
216 CoreMark
64 MHz Cortex-M4
32 MHz Cortex-M0+



● Optimized for mixed-signal applications

● Cortex-M0+ Radio co-processor

Make the choice of STM32WB series the 7 keys points to make the difference



OPENTHREAD
released by Google



zigbee

Open 2.4 GHz radio
Multi-protocol



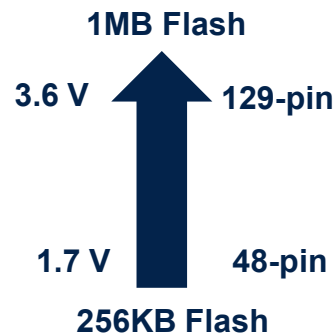
Dual-core / Full control
Ultra-low-power



IoT Protection ready



Massive integration
Cost saving



A large offer



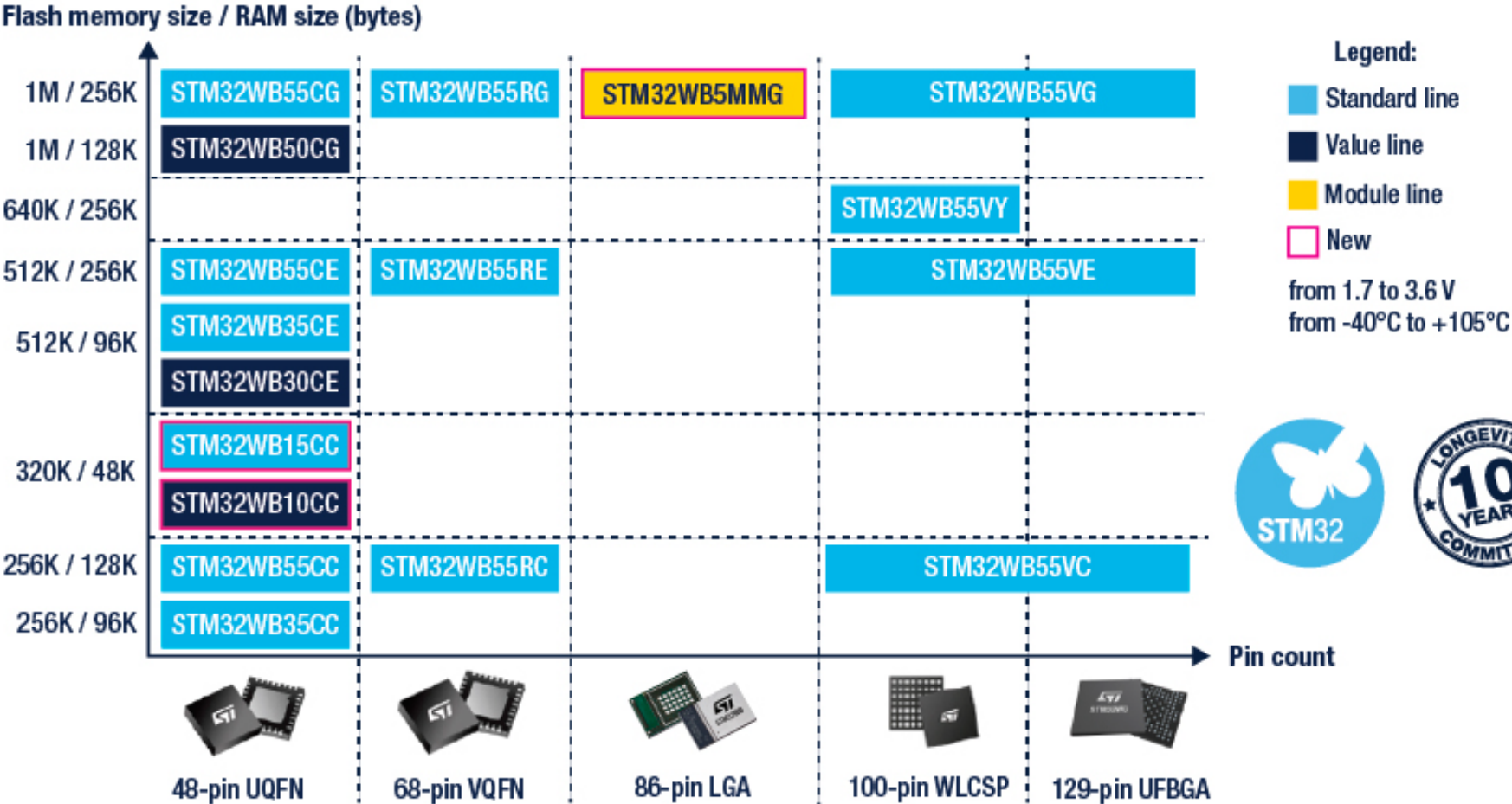
Advanced RF tool, Energy control
with C code generation



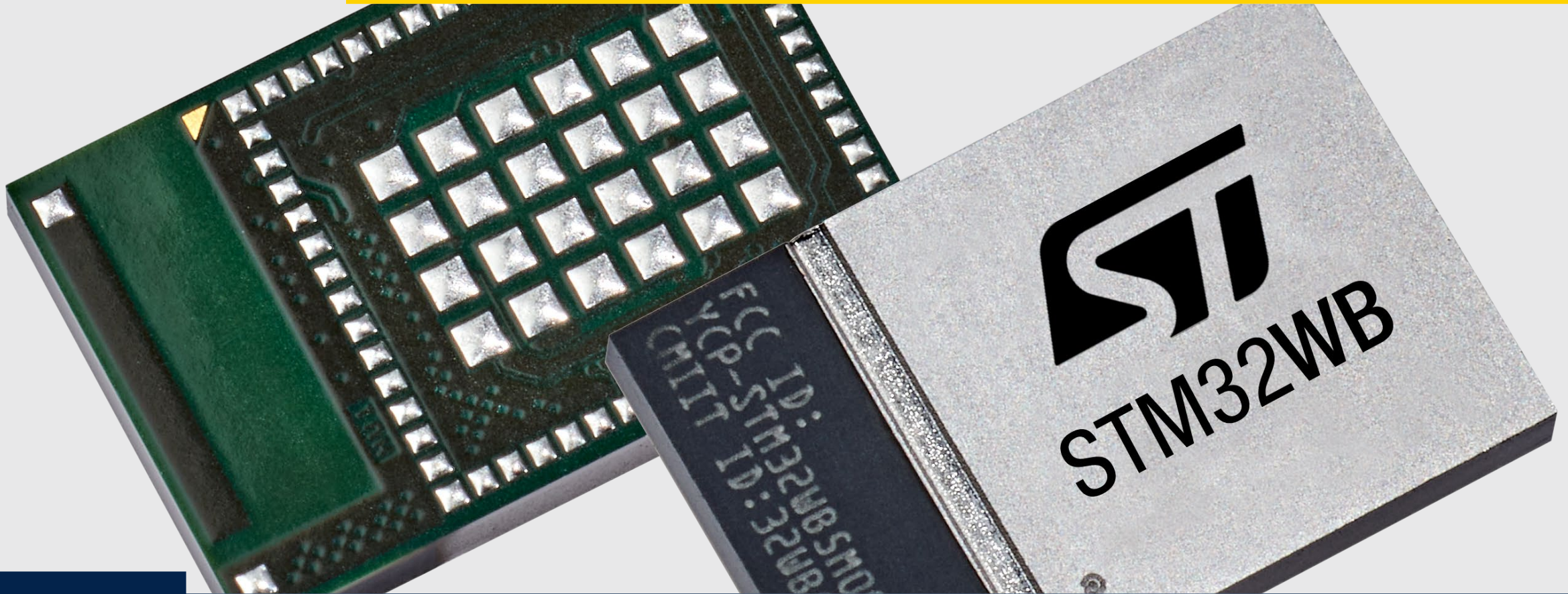
No matter what!

STM32WB - a large offer

Bluetooth LE 5.2, OpenThread, Zigbee 3.0 and proprietary protocol capable



**Available as a module
to reduce your time to market**



STM32WB5M - module

Easy to integrate - Light certification for customer

Key advantages

- WLCSP100 package integrated
- Maximum of features exposed
- Low-cost PCB for the mother board

Bottom view



Top view

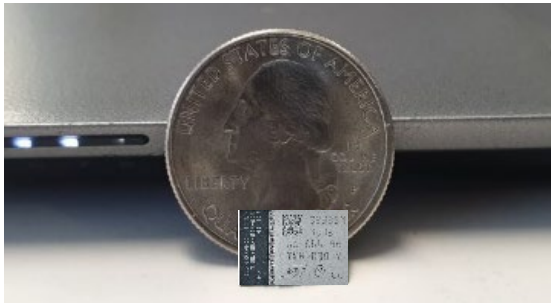
In production NOW!

STM32WB5M multi-protocol module

Small form factor

7.3x11 mm

Full ref design up to antenna, crystals



Reduce the cost

Down to 2 PCB layers

Everything inside (single cap outside)

Free of charge radio stack

Certified FCC, CE, NCC, JRF, KC, SRRC, ISED, GOST

Multi-protocols



Strong feature set

Dual-core based

1MB Flash/256KB RAM

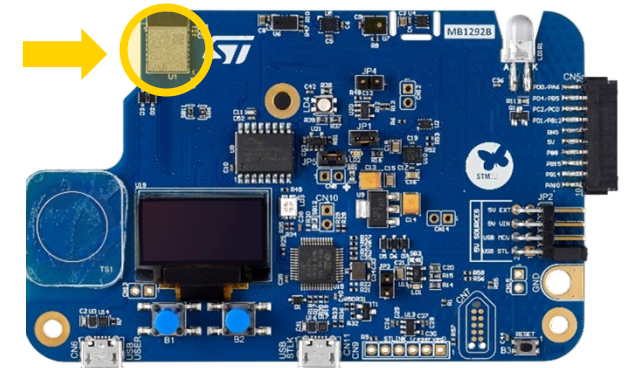
LCD, USB FS, ADC, COMP

Security

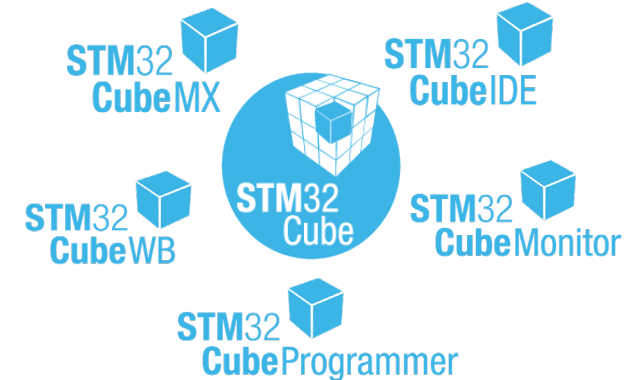
OTA (application, radio)



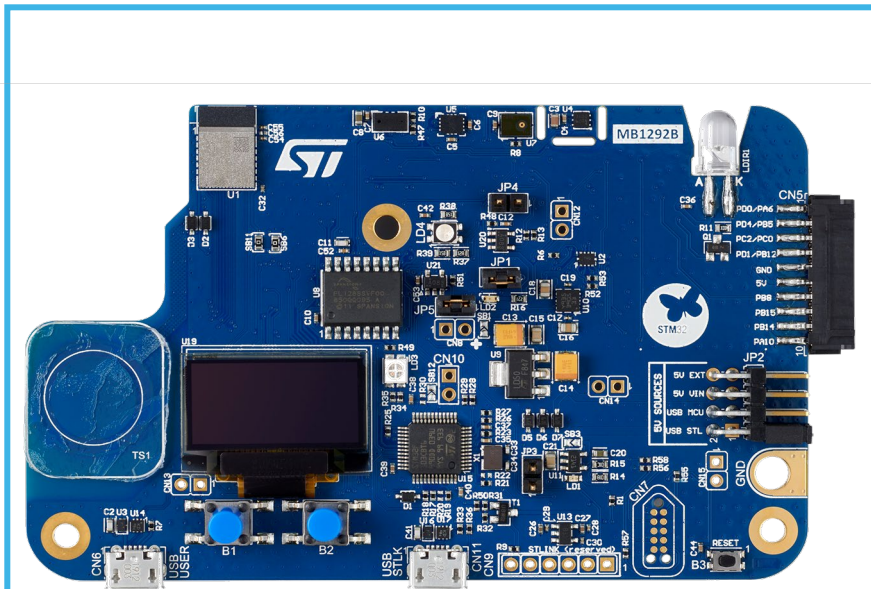
Discovery kit



STM32 ecosystem

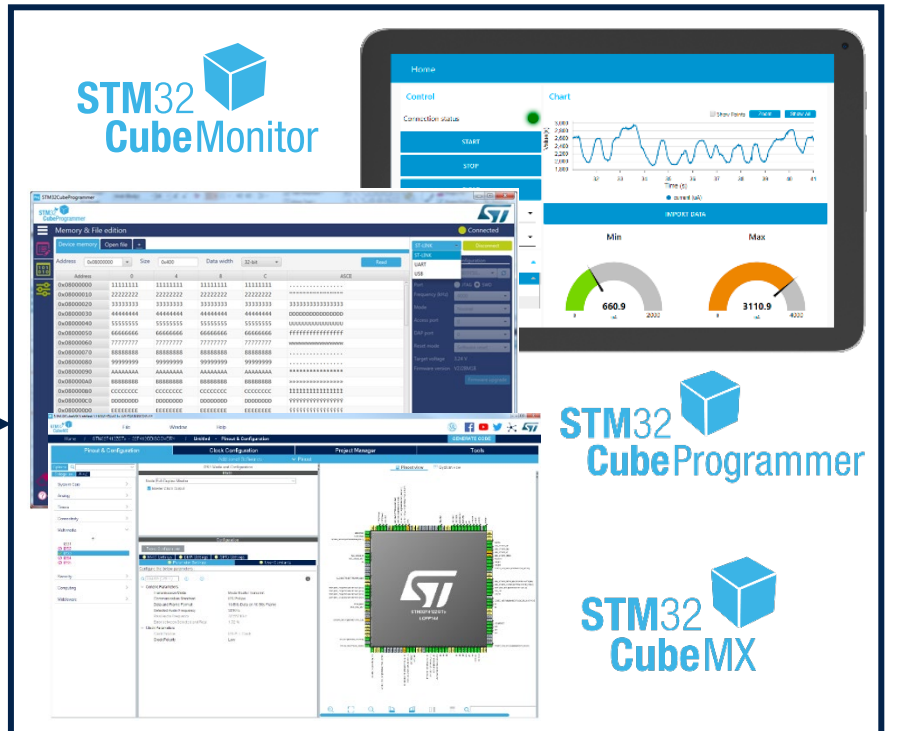


Prototyping made as easy as 1,2,3



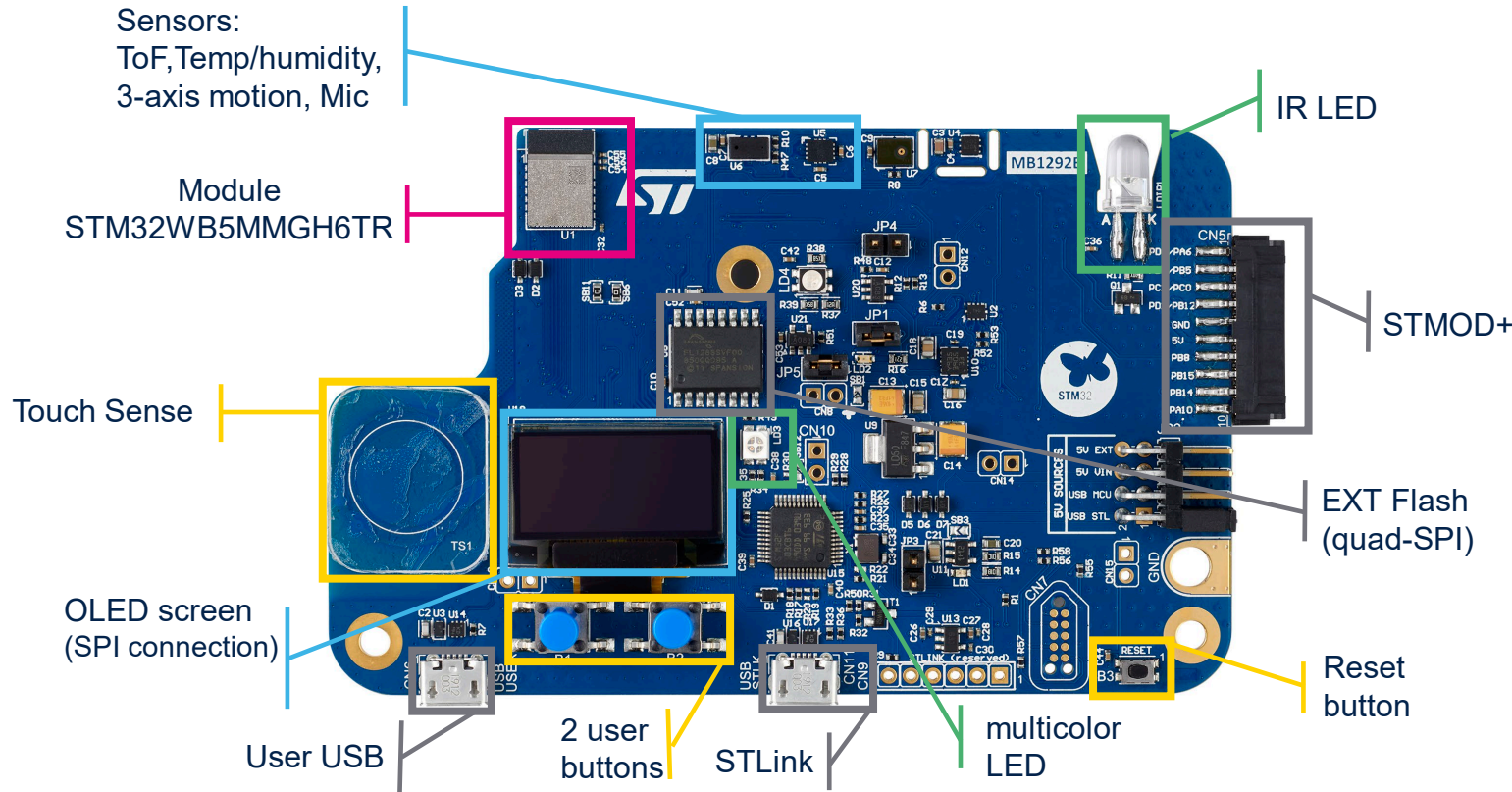
STM32WB5MM-DK*

Hardware
Discovery Kit

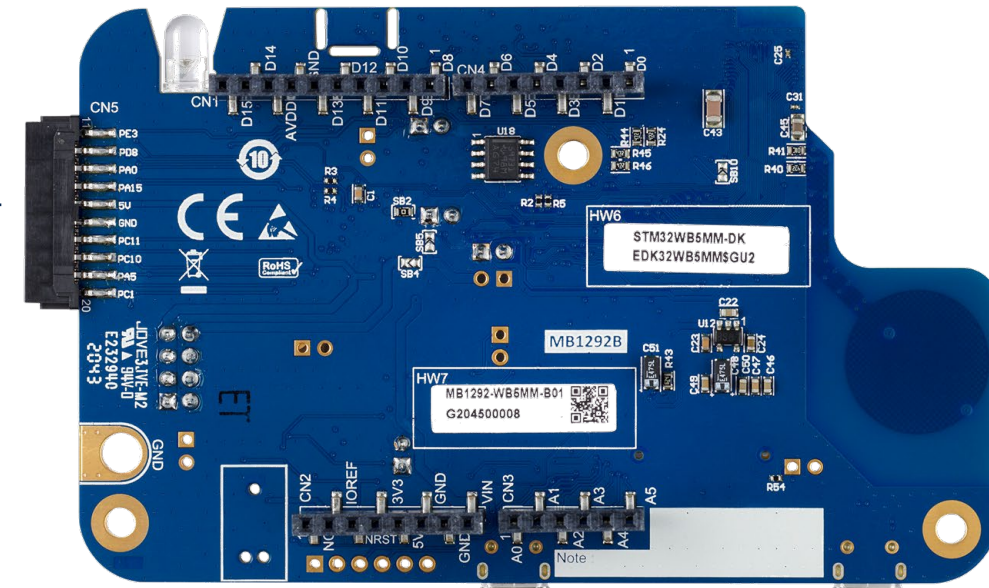


STM32CubeMX/STM32CubeWB/
STM32CubeProg & STM32CubeMonRF
Code generation
Power calculation

STM32WB5MM-DK



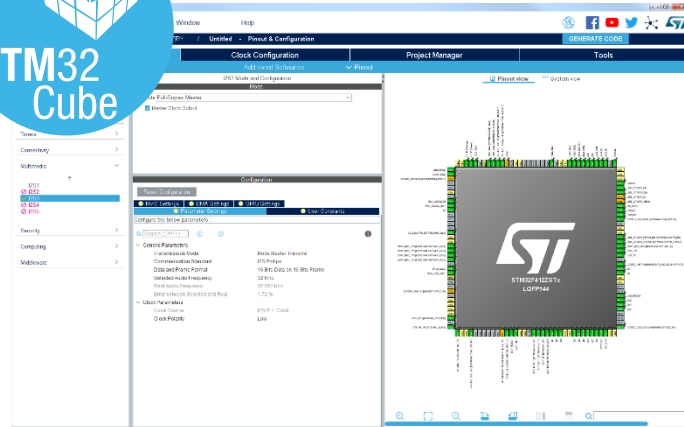
Top view



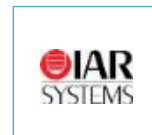
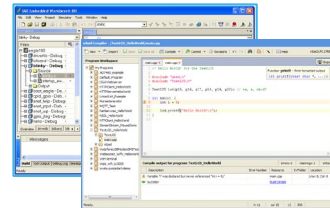
Bottom view
(ARDUINO connectors)

Software development tools

A complete flow, from configuration up to monitoring



FREE
IDE's



More to come after mass market launch



STM32CubeMX, GUI Builders
Configure & Generate Code

ST and Partner IDEs
Compile and Debug

STM32CubeProg/Monitor
Monitor, Program & Utilities



life.augmented



Releasing your creativity



[/STM32](#)



[@ST_World](#)



[community.st.com](#)



[www.st.com/STM32WB](#)



[wiki.st.com/stm32mcu](#)



[github.com/STMicroelectronics](#)



[STM32WB online training](#)



[STM32WB blog article](#)



[MOOC – STM32WB workshop](#)



life.augmented

Thank you

© STMicroelectronics - All rights reserved.

ST logo is a trademark or a registered trademark of STMicroelectronics International NV or its affiliates in the EU and/or other countries.

For additional information about ST trademarks, please refer to www.st.com/trademarks.

All other product or service names are the property of their respective owners.



life.augmented