

2020

Antenna Catalog

5G/4G/LTE | 2G/3G/GSM | WiFi/Bluetooth/BLE/ZigBee/ISM | LPWA/LoRa/SigFox/NB-IoT/ISM
GNSS/GPS(L1/L2/L5)/GLONASS/BeiDou/Galileo | RFID Reader | Satellite Communications | Combination

KEY MARKET SEGMENTS AND APPLICATIONS



Why Abracon?

Abracon is the critical link connecting high-quality factories, a global network of electronic component distributors, and 25,000 end customers requiring highly engineered solutions and design input. An in-house engineering team, a technology-leadership focus and a unique solution-selling approach provide ongoing benefits across the channel. Abracon's carefully developed long-term NPI strategy focuses on designing and launching revolutionary and proprietary new products.

A technical approach results in strong demand generation through early design involvement with OEMs, often gaining print on reference design positions and products that are "spec'd in."



**Strategic
Factory
Partner
Relationship**



**Superior
Product
Breadth**



**Unmatched
Channel
Access**



**Leading
Engineering
and Design
Capabilities**

Timing & Synchronization

- Quartz Crystals (XTAL)**
MHz or kHz, SMD or through-hole
- Quartz Oscillators (XO)**
MHz or 32.768kHz, SMD or through-hole
- Real Time Clock (RTC)**
Lowest power, highly integrated & accurate
- MEMS Oscillators**
General purpose or high performance
- Precision Quartz (XO/VCXO/TCXO/OCXO)**
Accurate temp compensation, low jitter/noise

Power & Energy

- Low Profile Shielded Inductors**
Medium to high power, high temperature
- High Power Toroid**
Inherent immunity to EMI, high temperature
- Drum Core Inductors**
Ideal for high power applications
- Chip Inductors**
Low profile and compact, saves space with high current carrying capability
- Wireless Charging Coils**
Reliable, efficient, eliminates power connectors

RF & Connectivity

- Chip Antennas**
Improve RF range, sensitivity compared to PCB antennas
- Patch Antennas**
Best sensitivity vs size compromise
- External Antennas**
Best sensitivity and range performance
- Flexible Antennas**
Low profile, multi-band, easy installation
- RJ45**
With integrated magnetics PoE, 10G to 100Mbps, SMD/PIH
- RFID**
Antennas and fully integrated tags

25,000+
Active Customers

7 DPPM
World-Class Quality

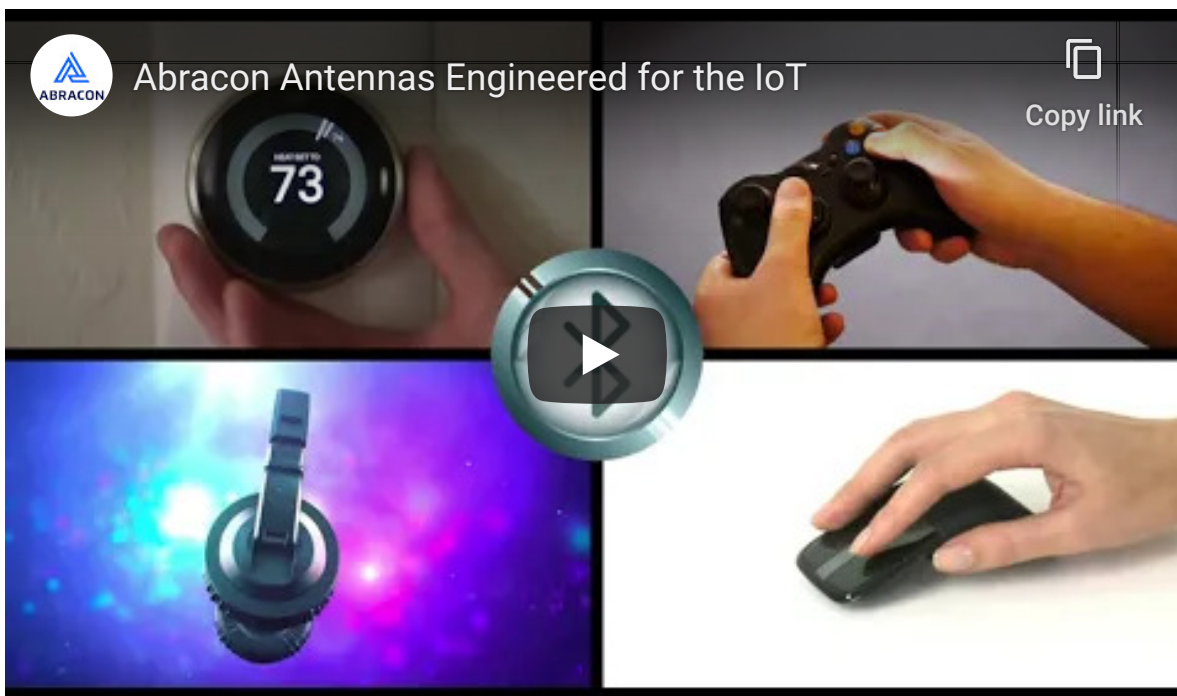
300 Million
Parts Shipped Annually

80,000+
SKUs

27
Distributors

TABLE OF CONTENTS

5G/4G/LTE Antennas.....	4
2G/3G/GSM Antennas	6
WiFi/Bluetooth/BLE/ZigBee/ISM Antennas	8
LPWA/LoRa/SigFox/NB-IoT/ISM Antennas	12
GNSS/GPS(L1/L2/L5)/GLONASS/BeiDou/Galileo Antennas	19
RFID Reader Antennas	29
Satellite Communications Antennas.....	32
Combination Antennas	33
PCB Trace vs. Chip Antenna Design Considerations	36
Antenna Impedance Matching.....	37
Antenna Optimization Service	38



About Abracon

Abracon is a leading global manufacturer of passive and electromechanical timing, synchronization, power, connectivity and RF solutions. Abracon helps engineers transform their ideas into products that meet the opportunities of tomorrow through a broad portfolio of quartz crystals, crystal and MEMS oscillators, real time clocks, power inductors, IoT antennas and more.

5G/4G/LTE ANTENNAS

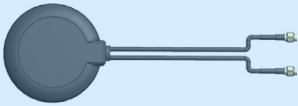



Our high performing 5G antennas provide coverage for sub-6 GHz 5G NR and CBRS bands. Cellular antennas operate across a broad range of frequencies between 700-960 MHz, 1710-2170 MHz and 2500-2700 MHz, catering to all 4G/LTE/3G/2G applications. Abracon offers ceramic chip SMD antennas, flexible PCB antennas and external antennas with different mounts, omnidirectional radiation patterns and weather resistant capability (IP67 rated) for easy integration in wireless communication devices. High performing MIMO antennas with different mounting options are available for enhanced data rate and quality of service (QoS).

APPLICATIONS

- IoT
- Machine to Machine
- Telecommunications
- Networking
- Telematics Control Units
- Video and Surveillance
- Medical Devices
- Consumer Electronics
- Transport and Vehicles
- Vending Machines
- Fleet Monitoring
- GSM Modems

					
PART NUMBER	ACAR3705-S698	ACAR4008-S698	AFAC240020-M698	AFAC5867-S698	AFAC110020-S698
TYPE	Chip	Chip	Flexible PCB	Flexible PCB	Flexible PCB
FREQUENCY (MHz)	700-960 1710-2170 2500-2700	700-960 1710-2170 2500-2700	698-960 1710-2690	698-960 1710-2690	698-960 1710-2690
GAIN (dBi)	-3.77 -1.13	-1.55 4.1	3	2	3
MOUNTING	Surface Mount	Surface Mount	Embedded Mount	Adhesive Mount	Adhesive Mount
POLARIZATION	Linear	Linear	Linear	Linear	Linear
PACKAGE SIZE (mm)	37 x 5 x 5	40 x 8 x 3.2	240 x 20 x 0.2	67.4 x 58.4 x 0.2	110 x 20 x 0.2
KEY FEATURES	Compact size	High gain	Low profile, 2xMIMO, Ø1.37mm, 2xIPEX	Low profile, Compact size, Ø1.13mm, IPEX	Low profile, Ø1.13mm, IPEX
			New		

5G/4G/LTE ANTENNAS

				
PART NUMBER	AEACBA081014-M698	AEACBK081014-M698	AEACAC198013-S5GNR	AEACAC198013-S698
TYPE	Puck MIMO	Puck MIMO	Whip - Tilt	Whip-Tilt
FREQUENCY (MHz)	698-960 1710-2690	698-960 1710-2690	698-960 1710-2690 3300-3800	698-960 1710-2655
GAIN (dBi)	3	2.5	3	3
MOUNTING	Adhesive Mount	Panel Mount	Connector Mount	Connector Mount
POLARIZATION	Linear	Linear	Linear	Linear
PACKAGE SIZE (mm)	Ø81.6 x 14.5	Ø81.6 x 14.5	198 x Ø13.0	198 x Ø13.0
KEY FEATURES	IP67 rated, 2xMIMO, 2xRG-174, 2xSMA(M)	IP67 rated, 2xMIMO, 2xRG-174, 2xSMA(M)	High gain, SMA(M), 5G/CBRS	SMA(M)
			New	

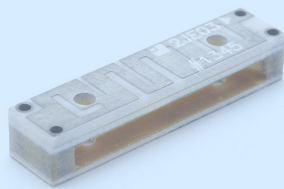
				
PART NUMBER	AEACAD097015-S698	AEACAD460065-S698	AEACCA115021-S698	AEACBK081014-S698
TYPE	Magnetic Mount	Magnetic Mount	Blade	Puck
FREQUENCY (MHz)	700-2700	698-960 1710-2700	698-960 1710-2655	698-960 1710-2690
GAIN (dBi)	5	5	2	3
MOUNTING	Magnetic Mount	Magnetic Mount	Adhesive Mount	Screw Mount
POLARIZATION	Linear	Linear	Linear	Linear
PACKAGE SIZE (mm)	97 x Ø15	Ø65 x 460	115.6 x 21.7 x 5.8	Ø81.3 x 14.6
KEY FEATURES	High gain, RG-58, SMA	High gain, RG-58, SMA(M)	Low profile, RG-174, SMA(M)	IP67 rated, RG-174, SMA(M)

2G/3G/GSM ANTENNAS

2G/3G/GSM cellular antennas operate across a broad range of frequencies between 824-960 MHz and 1710-2170 MHz. Abracon offers compact ceramic chip antennas, low-profile flexible PCB antennas, and external whip and puck antennas with different form factors and mounts for easy installation in a broad range of wireless data and industrial applications. These multi-band antennas support evolving LTE and 4G cellular technologies in their operating bands.

APPLICATIONS

- IoT
- Machine to Machine
- Telecommunications
- Networking
- Telematics Control Units
- Video and Surveillance
- Medical Devices
- Consumer Electronics
- Broadband Cellular
- Transport Systems
- Fleet Monitoring
- MIMO Routers



PART NUMBER	ACAJ-109-T	ACAR3005-S824
TYPE	Chip	Chip
FREQUENCY (MHz)	824-894 880-960 1710-1880 1850-1990 920-2170	824-960 1710-2170
GAIN (dBi)	-2.4 6.4	3.12
MOUNTING	Surface Mount	Surface Mount
POLARIZATION	Linear	Linear
PACKAGE SIZE (mm)	24 x 5.5 x 4.4	30 x 5 x 5
KEY FEATURES	Compact size, Multi-band	Multi-band

2G/3G/GSM ANTENNAS

			
PART NUMBER	AFAG7020-S824	APAMS-119	APAMS-118
TYPE	Flexible PCB	Whip - Straight	Whip - Right Angle
FREQUENCY (MHz)	824-894 880-960 1710-1880 1850-1990 1710-2690	890-960 1710-1880	890-960 1710-1880
GAIN (dBi)	2.0 3.5	2.15 2.15	2 3
MOUNTING	Adhesive Mount	Connector Mount	Connector Mount
POLARIZATION	Linear	Linear	Linear
PACKAGE SIZE (mm)	70 x 20	78 x Ø12.0	108.1 x Ø10.0
KEY FEATURES	Low profile, Ø11.3mm, IPEX	Compact size, SMA	SMA

			
PART NUMBER	AEACCA115021-S850	APAMS-101	APAMS-102
TYPE	Blade	Blade	Blade
FREQUENCY (MHz)	824-960 1710-2170	820-960 1710-1990	820-960 1710-1880 1850-1990 1900- 2170
GAIN (dBi)	2	1 2	1 2 2.5 3
MOUNTING	Adhesive Mount	Adhesive Mount	Adhesive Mount
POLARIZATION	Linear	Linear	Linear
PACKAGE SIZE (mm)	115.6 x 21.7 x 5.8	115 x 22 x 7	138 x 21 x 6
KEY FEATURES	Low profile, RG-174, SMA	RG-174, FME-K3	RG-174, SMA-J3

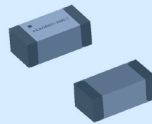
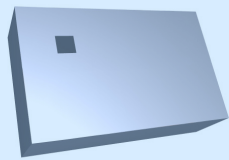


WiFi/BLUETOOTH/BLE/ZIGBEE/ISM ANTENNAS

Abracon offers a wide variety of ceramic chip antennas for WiFi/BT applications, such as compact, high gain, and dual-band antennas. Flexible PCB, external puck and low-profile whip antennas ensure quality reception and transmission for WiFi, Bluetooth, ZigBee and ISM.

APPLICATIONS

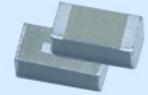
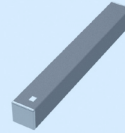
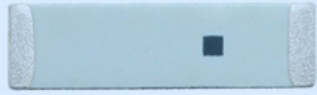
- IoT
- Machine to Machine
- Wearables
- Routers
- Smart Home
- UAV/Drone
- Connected Vehicles
- Smart Cities
- Portable Devices
- Set-Top Boxes
- Network Devices
- VR/AR



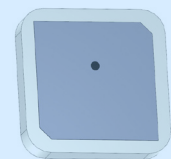
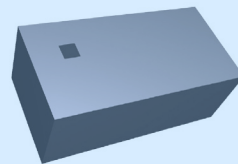
PART NUMBER	ACAG0201-2450-T	ACAG0301-2450-T	AMCA31-2R450G-S1F-T3
TYPE	Chip	Chip	Chip
FREQUENCY (MHz)	2450	2400-2500	2450
GAIN (dBi)	2.7	5.19	0.5
MOUNTING	Surface Mount	Surface Mount	Surface Mount
POLARIZATION	Linear	Linear	Linear
PACKAGE SIZE (mm)	2 x 1.25 x 0.6	3.2 x 1.6 x 1.2	3.2 x 1.6 x 1.2
KEY FEATURES	Miniature size, High gain	Compact size, High gain	Compact size

New

WIFI/BLUETOOTH/BLE/ZIGBEE/ISM ANTENNAS

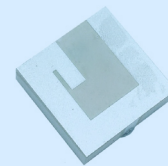
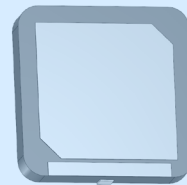
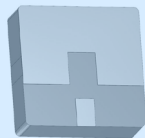


PART NUMBER	AMCA72-2R470G-S1F-T	ACAG0801-2450-T	ACAG0301-5500-T
TYPE	Chip	Chip	Chip
FREQUENCY (MHz)	2470	2450	5500
GAIN (dBi)	2.5	7.29	4.5
MOUNTING	Surface Mount	Surface Mount	Surface Mount
POLARIZATION	Linear	Linear	Linear
PACKAGE SIZE (mm)	7 x 2 x 1	8 x 1 x 1	3.2 x 1.6 x 1.2
KEY FEATURES		High gain	Compact size, High gain

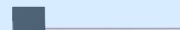


PART NUMBER	ACAR0301-SW2	ACAG0301-24505500-T	APAGM2525-S2450
TYPE	Chip	Chip	Passive Patch
FREQUENCY (MHz)	2400-2500 5150-5825	2450 5500	2400-2500
GAIN (dBi)	1.0 2.5	2.23 4.05	4.5
MOUNTING	Surface Mount	Surface Mount	Through-hole Mount
POLARIZATION	Linear	Linear	RHCP
PACKAGE SIZE (mm)	3.05 x 1.6 x 0.55	3.2 x 1.6 x 1.2	25 x 25 x 4
KEY FEATURES	Low profile, Dual-band	High gain, Dual-band	High gain

WIFI/BLE/ZIGBEE/ISM ANTENNAS



PART NUMBER	APARN1204-S2450	APAKN1304-S2450-T	APAKN2504-S2448-T	APAKN1304-S5517-T
TYPE	Passive Patch	Passive Patch	Passive Patch	Passive Patch
FREQUENCY (MHz)	2400-2500	2412-2484	2412-2484	5150-5885
GAIN (dBi)	2	5	7	6
MOUNTING	Surface Mount	Surface Mount	Surface Mount	Surface Mount
POLARIZATION	Linear	Linear	Linear	Linear
PACKAGE SIZE (mm)	12 x 12 x 4	13 x 13 x 4	25 x 25 x 4	13 x 13 x 4
KEY FEATURES	Compact size	High gain	Very high gain	Compact size, Very high gain



PART NUMBER	APARC2505-S2450	ABAR1504-S2450	AFAG2220-SW2	AEACAC025009-S2400
TYPE	Active Patch	PCB Trace	Flexible PCB	Whip - Straight
FREQUENCY (MHz)	2450	2400-2484	2400-2500 5100-5900	2400-2483.5
GAIN (dBi)	0.5	2.28	2	2
MOUNTING	Surface Mount	Adhesive Mount	Adhesive Mount	Connector Mount
POLARIZATION	RHCP	Linear	Linear	Linear
PACKAGE SIZE (mm)	25.1 x 25.1 x 5.5	15 x 4 x 0.8	22 x 20	25.9 x Ø9.5
KEY FEATURES	Ø1.37mm, IPEX	Ultra-compact size, Low profile, Ø1.13mm, IPEX	Low profile, Dual-band, Ø1.13mm, IPEX	Ultra-compact size, SMA(M)
	New	New		

WIFI/BLUETOOTH/BLE/ZIGBEE/ISM ANTENNAS

				
PART NUMBER	AEACAC049009-S2400	AEACAQ190012-S2400	APAMSJ-137	APAMBJ-135
TYPE	Whip - Straight	Whip - Straight	Whip - Straight	Whip - Straight
FREQUENCY (MHz)	2400-2483.5	2400-2483.5	4850-5850	2400 5000
GAIN (dBi)	2	5	5	0 2
MOUNTING	Connector Mount	Knuckle Mount	Connector Mount	Connector Mount
POLARIZATION	Linear	Linear	Linear	Linear
PACKAGE SIZE (mm)	49.3 x Ø9.2	190 x Ø12.9	44 x Ø9.6	54.4 x Ø10.0
KEY FEATURES	Compact size, RG-178, IPEX	High gain, RG-178, IPEX	Compact size, High gain, SMA-J3	Dual-band, SMA-J3
	New			

				
PART NUMBER	APAMS-121	AEACBK050048-MW2	AEACBK050048-SW2	APAMBJ-145
TYPE	Whip - Tilt	Dome Combo	Dome	Dome
FREQUENCY (MHz)	2350-2450 5700-5900	2400-2483 4900-5825	2400-2484 4900-5825	2400 5100-5900
GAIN (dBi)	2 2	2	2	5 2
MOUNTING	Connector Mount	Screw Mount	Screw Mount	Connector Mount
POLARIZATION	Linear	Linear	Linear	Linear
PACKAGE SIZE (mm)	86 x Ø10.0	48 x Ø50	48 x Ø50	Ø77.3 x 36.5
KEY FEATURES	Dual-band, SMA-RP	IP67 rated, Dual-band MIMO, 2xRG-174, 2xSMA(M)	IP67 rated, Dual-band, RG-174, SMA	High gain, Dual-band, RG-174U, SMA(M)
		New	New	

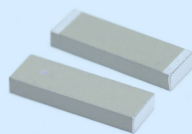


LPWA/LORA/SIGFOX/NB-IOT/ISM ANTENNAS

Abrakon offers antennas for LPWAN technologies, which combine low power consumption and wide area coverage to provide cost-effective long battery life solutions for low data rate IoT applications. The ceramic SMD chip, ceramic patch and external whip type antenna solutions support LPWA (for LoRa, SigFox applications) and ISM (for advanced industrial, scientific and medical devices) coverage, typically 915 MHz (USA), 868 MHz (Europe), 433 MHz (Asia) and 169 MHz. NB-IoT, Cat M1 and sub-GHz cellular bands antennas are also offered in chip, flexible and external types for connecting devices.

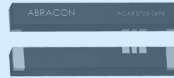
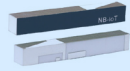
APPLICATIONS

- IoT
- Machine to Machine
- Remote Monitoring
- Connected Lighting
- Smart Meters
- Wearables
- Network Devices
- Automation
- Asset Tracking
- Smart City
- Low Power Radio Links
- Sensor Networks
- Medical Devices
- Home Automation



PART NUMBER	ACAJ-110-T	ACAG1204-433-T	ACAG1204-868-T	ACAG1204-915-T
TYPE	Chip	Chip	Chip	Chip
FREQUENCY (MHz)	868 915	433	868	915
GAIN (dBi)	-7.4 -1.74 2.7	-1.72	2.63	3.42
MOUNTING	Surface Mount	Surface Mount	Surface Mount	Surface Mount
POLARIZATION	Linear	Linear	Linear	Linear
PACKAGE SIZE (mm)	9 x 3 x 1.2	12 x 4 x 1.6	12 x 4 x 1.6	12 x 4 x 1.6
KEY FEATURES	Compact size, LoRA/SigFox/ISM	Low profile, LoRA/SigFox/ISM	Low profile, LoRA/SigFox/ISM	Low profile, LoRA/SigFox/ISM

LPWA/LORA/SIGFOX/NB-IOT/ISM ANTENNAS



PART NUMBER	ACAR3705-SB	ACAR3705-S698	ACAR4008-S698
TYPE	Chip	Chip	Chip
FREQUENCY (MHz)	698-960	700-960 1710-2170 2500-2700	700-960 1710-2170 2500-2700
GAIN (dBi)	0.61	-3.77 -1.13	-1.55 4.1
MOUNTING	Surface Mount	Surface Mount	Surface Mount
POLARIZATION	Linear	Linear	Linear
PACKAGE SIZE (mm)	37 x 5 x 5	37 x 5 x 5	40 x 8 x 3.2
KEY FEATURES	Multi-band, Sub-GHz NB-IoT/LTE Cat M1	Multi-band, NB-IoT/LTE Cat M1	Multi-band, NB-IoT/LTE Cat M1
	New		

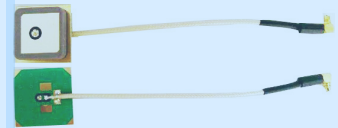
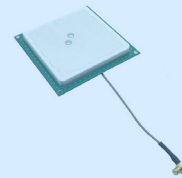
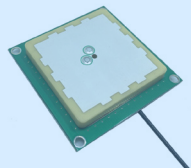
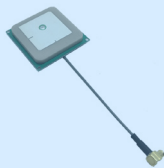


PART NUMBER	APAE868R2540JBDB2-T	APAE915R2540ABDB1-T	APAES923R3640C16-T
TYPE	Passive Patch	Passive Patch	Passive Patch
FREQUENCY (MHz)	868	915	923
GAIN (dBi)	-1.37	-	1.5
MOUNTING	Through-hole Mount / Adhesive Tape	Through-hole Mount / Adhesive Tape	Through-hole Mount / Adhesive Tape
POLARIZATION	RHCP	RHCP	RHCP
PACKAGE SIZE (mm)	25 x 25 x 4	25 x 25 x 4	36 x 36 x 4
KEY FEATURES	Compact size, LoRA/SigFox/ISM	Compact size, LoRA/SigFox/ISM	LoRA/SigFox/ISM

LPWA/LORA/SIGFOX/NB-IOT/ISM ANTENNAS

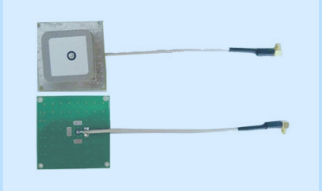


PART NUMBER	APAES923R4560C16-T	APAES915R6460C16-T	APAES915R80C16-T	APAES868R8060C16-T
TYPE	Passive Patch	Passive Patch	Passive Patch	Passive Patch
FREQUENCY (MHz)	923	915	915	868
GAIN (dBi)	2.5	3.5	5	5
MOUNTING	Through-hole Mount / Adhesive Tape	Through-hole Mount / Adhesive Tape	Through-hole Mount / Adhesive Tape	Through-hole Mount / Adhesive Tape
POLARIZATION	RHCP	RHCP	RHCP	RHCP
PACKAGE SIZE (mm)	45 x 45 x 6	62.5 x 62.5 x 6	80 x 80 x 6	80 x 80 x 6
KEY FEATURES	LPWA/LoRa/SigFox/ISM	LPWA/LoRa/SigFox/ISM	High gain, LoRa/ SigFox/ISM	High gain, LoRa/ SigFox/ISM



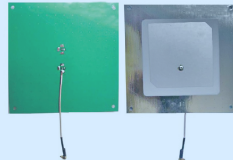
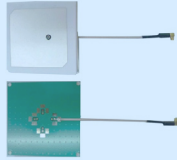
PART NUMBER	ARRKP4065-S915A	ARRKP5062-S915B	ARRKP7059-S915B	ARRCN5-868.000MHz
TYPE	Passive Patch	Passive Patch	Passive Patch	Passive Patch
FREQUENCY (MHz)	915	915	915	868-871
GAIN (dBi)	1.5	3	4	-5
MOUNTING	Through-hole Mount	Through-hole Mount	Through-hole Mount	Connector Mount
POLARIZATION	RHCP	RHCP	RHCP	RHCP
PACKAGE SIZE (mm)	40 x 40 x 6.5	50 x 50 x 6.2	70 x 70 x 5.9	20.5 x 20.5 x 7.8
KEY FEATURES	Built-in ground plane, Ø1.13mm, IPEX, LPWA/ISM	Built-in ground plane, RG-178, MMCX-JW, LPWA/ISM	High gain, Built-in ground plane, RG-178, MMCX-JW, LPWA/ISM	Built-in ground plane, Compact size, RG-178, MMCX-JW3, LPWA/ISM

LPWA/LORA/SIGFOX/NB-IOT/ISM ANTENNAS

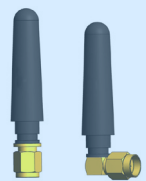
				
PART NUMBER	ARRCN5-915.000MHz	ARRAN5-915.000MHz	ARRAN5-868.000MHz	ARRRN5-868.000MHz
TYPE	Passive Patch	Passive Patch	Passive Patch	Passive Patch
FREQUENCY (MHz)	915-918	915-918	868-871	868-871
GAIN (dBi)	-5	0.5	0.5	1.5
MOUNTING	Connector Mount	Connector Mount	Connector Mount	Connector Mount
POLARIZATION	RHCP	RHCP	RHCP	RHCP
PACKAGE SIZE (mm)	20.5 x 20.5 x 7.8	35 x 35 x 8.2	35 x 35 x 8.2	40 x 40 x 8
KEY FEATURES	Built-in ground plane, Compact size, RG-178, MMCX-JW3, LPWA/ISM	Built-in ground plane, RG-178, MMCX-JW3, LPWA/ISM	Built-in ground plane, RG-178, MMCX-JW3, LPWA/ISM	Built-in ground plane, RG-178, MMCX-JW3, LPWA/ISM

				
PART NUMBER	ARRRN5-915.000MHz	ARRSN5-868.000MHz	ARRSN5-915.000MHz	ARRTN5-868.000MHz
TYPE	Passive Patch	Passive Patch	Passive Patch	Passive Patch
FREQUENCY (MHz)	915-918	868-871	915-918	868-871
GAIN (dBi)	1.5	2.5	2.5	3.5
MOUNTING	Connector Mount	Connector Mount	Connector Mount	Connector Mount
POLARIZATION	RHCP	RHCP	RHCP	RHCP
PACKAGE SIZE (mm)	40 x 40 x 8	50 x 50 x 9.4	50 x 50 x 9.4	65 x 65 x 9.2
KEY FEATURES	Built-in ground plane, RG-178, MMCX-JW3, LPWA/ISM	Built-in ground plane, RG-178, MMCX-JW3	Built-in ground plane, RG-178, MMCX-JW3, LPWA/ISM	Built-in ground plane, RG-178, MMCX-JW3, LPWA/ISM

LPWA/LORA/SIGFOX/NB-IOT/ISM ANTENNAS



PART NUMBER	ARRRTN5-915.000MHz	ARRUN5-868.000MHz	ARRUN5-915.000MHz	AFAC5867-S698
TYPE	Passive Patch	Passive Patch	Passive Patch	Flexible PCB
FREQUENCY (MHz)	915-918	868-871	915-918	698-960 1710-2690
GAIN (dBi)	3.5	5.5	5.5	2
MOUNTING	Connector Mount	Connector Mount	Connector Mount	Adhesive Mount
POLARIZATION	RHCP	RHCP	RHCP	Linear
PACKAGE SIZE (mm)	65 x 65 x 9.2	120 x 120 x 9.5	120 x 120 x 9.5	67.4 x 58.4 x 0.2
KEY FEATURES	Built-in ground plane, RG-178, MMCX-JW3, LPWA/ISM	Built-in ground plane, High gain, RG-178, MMCX-JW3, LPWA/ISM	Built-in ground plane, High gain, RG-178, MMCX-JW3, LPWA/ISM	Low profile, Compact size, Ø1.13mm, IPEX, NB-IoT/LTE Cat M1



PART NUMBER	AFAC110020-S698	AEACAC054010-S915	AEACAC049018-S868	AEACAC053010Z-S433
TYPE	Flexible PCB	Whip - Straight	Whip - Right Angle	Whip - Right Angle / Straight
FREQUENCY (MHz)	698-960 1710-2690	915	868	433
GAIN (dBi)	3	2	2	
MOUNTING	Adhesive Mount	Connector Mount	Connector Mount	Connector Mount
POLARIZATION	Linear	Linear	Linear	
PACKAGE SIZE (mm)	110 x 20 x 0.2	45.9 x Ø10.0	49.9 x Ø18.6	53.4 x Ø10.4
KEY FEATURES	Low profile, Multi-band, Ø1.13mm, IPEX, NB-IoT/LTE Cat M1	Compact size, Low profile, SMA, LPWA/ISM	Compact size, Low profile, LoRa/ SigFox/ISM	Ultra-compact size, SMA(M), LoRa/SigFox/ISM
		New	New	New

LPWA/LORA/SIGFOX/NB-IOT/ISM ANTENNAS

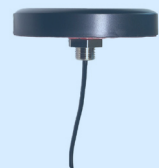
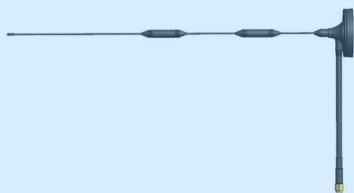
				
PART NUMBER	AEACAC053010-S868	APAMSTJ-139	AEACAC198013-S5GNR	AEACAC195013-S868
TYPE	Whip - Straight	Whip - Straight	Whip - Tilt	Whip - Tilt
FREQUENCY (MHz)	868	380-500	698-960 1710-2690 3300-3800	868
GAIN (dBi)	2	2	3	3
MOUNTING	Connector Mount	Connector Mount	Connector Mount	Connector Mount
POLARIZATION	Linear	Linear	Linear	Linear
PACKAGE SIZE (mm)	53.4 x Ø10.4	54.6 x Ø13.2	198 x 13	195 x Ø12.9
KEY FEATURES	Compact size, Low profile, LoRa/SigFox/ISM	Compact size, SMA(M), TETRA radio, LPWA/ISM	High gain, SMA(M), LPWA/ISM	SMA(M), LoRa/SigFox/ISM
	New		New	New

				
PART NUMBER	AEACAC195013-S915	AEACAC254010-S169	AEACAC198013-S698	AEACAQ190012-S868
TYPE	Whip - Tilt	Whip - Tilt	Whip - Tilt	Whip - Straight
FREQUENCY (MHz)	915	161-177	698-960 1710-2655	868
GAIN (dBi)	3	2	3	3.5
MOUNTING	Connector Mount	Connector Mount	Connector Mount	Knuckle Mount
POLARIZATION	Linear	Linear	Linear	Linear
PACKAGE SIZE (mm)	195 x Ø12.9	254 x Ø10.9	198 x Ø13.0	190 x Ø12.9
KEY FEATURES	SMA(M), LoRa/SigFox/ISM	SMA, LoRa/SigFox/ISM	SMA(M), LoRa/SigFox/ISM/Sub-GHz - NB-IoT/LTE Cat M1	High gain, Ø1.37mm, IPEX, LPWA/ISM
	New	New		

LPWA/LORA/SIGFOX/NB-IOT/ISM ANTENNAS



PART NUMBER	AEACAQ190012-S915	AEACAD153029-S433	AEACAD097015-S698
TYPE	Whip - Straight	Magnetic Mount	Magnetic Mount
FREQUENCY (MHz)	915	433-960	700-2700
GAIN (dBi)	3.5	3	5
MOUNTING	Knuckle Mount	Magnetic Mount	Magnetic Mount
POLARIZATION	Linear	Linear	Linear
PACKAGE SIZE (mm)	190 x Ø12.9	153.3 x Ø29.4	97 x Ø15
KEY FEATURES	High gain, Ø1.37mm, IPEX, LPWA/ISM	RG-174, SMA, LoRA/SigFox/ISM/Sub-GHz - NB-IoT/LTE Cat M1	High gain, RG-58, SMA, NB-IoT/LTE Cat M1
		New	



PART NUMBER	AEACAD460065-S698	AEACCA115021-S698	AEACBK081014-S698
TYPE	Magnetic Mount	Blade	Puck
FREQUENCY (MHz)	698-960 1710-2700	698-960 1710-2655	698-960 1710-2690
GAIN (dBi)	5	2	3
MOUNTING	Magnetic Mount	Adhesive Mount	Screw Mount
POLARIZATION	Linear	Linear	Linear
PACKAGE SIZE (mm)	Ø65 x 460	115.6 x 21.7 x 5.8	Ø81.3 x 14.6
KEY FEATURES	High gain, RG-58, SMA, NB-IoT/LTE Cat M1	Low profile, RG-174, SMA, NB-IoT/LTE Cat M1	IP67 rated, RG-174, SMA(M), NB-IoT/LTE Cat M1



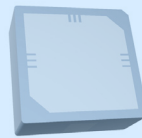
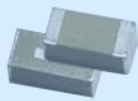
GNSS/GPS(L1/L2/L5)/GLONASS/BEIDOU/GALILEO ANTENNAS

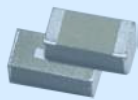
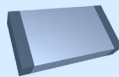
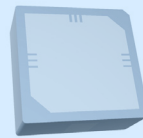

Abracon offers GNSS/GPS(L1/L2/L5)/GLONASS/BeiDou/Galileo antennas with multi-band capability and weather resistance to maximize the GNSS receiver’s performance in rugged environments.

The solutions span across a range of choices, such as linear, circular and omnidirectional polarization. They include small ceramic SMD chip antennas, directional patch antennas and high accuracy stacked patch antennas that allow flexibility of antenna orientation for receiving satellite signal. The options include active antennas with integrated high gain LNA guarantee positioning accuracy and reliability for GNSS signals.

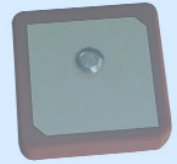
APPLICATIONS

- IoT
- Machine to Machine
- Navigation
- Rail Systems
- Commercial Vehicles
- Industrial Drones
- Surveying
- Fleet Management
- Marine GPS
- Geofencing
- Security Surveillance
- Mapping
- Smart Agriculture
- Transportation
- Logistics

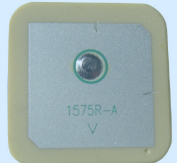


				
PART NUMBER	ACAG0301-1575-T	ACAR0301-SG3	APAKN0904-S1575-T	APAE1575R1240ABDD1-T
TYPE	Chip	Chip	Passive Patch	Passive Patch
FREQUENCY (MHz)	1575	1561-1610	1575.42	1575.42
GAIN (dBi)	4.18	1.69 -1.81 1.43	0.5	0.6
MOUNTING	Surface Mount	Surface Mount	Surface Mount	Through-hole Mount / Adhesive Tape
POLARIZATION	Linear	Linear	RHCP	RHCP
PACKAGE SIZE (mm)	3.2 x 1.6 x 0.6	3.05 x 1.6 x 0.55	9 x 9 x 4	12 x 12 x 4
KEY FEATURES	GPS, High gain	GNSS, Multi-band, Low profile	GPS, Ultra-compact size	GPS, Compact size

GNSS/GPS(L1/L2/L5)/GLONASS/BEIDOU/GALILEO ANTENNAS

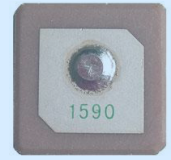


PART NUMBER	APAE1575R1340ABDD6-T	APAE1575R1540AZDB2F-T	APAE1575R1820ABDC1-T	APAE1575R1840AADB7-T
TYPE	Passive Patch	Passive Patch	Passive Patch	Passive Patch
FREQUENCY (MHz)	1575.42	1575.42	1575.42	1575.42
GAIN (dBi)	-	1.2	3.3	-
MOUNTING	Through-hole Mount / Adhesive Tape	Through-hole Mount / Adhesive Tape	Through-hole Mount / Adhesive Tape	Through-hole Mount / Adhesive Tape
POLARIZATION	RHCP	RHCP	RHCP	RHCP
PACKAGE SIZE (mm)	13 x 13 x 4	15 x 15 x 4	18 x 18 x 2	18 x 18 x 4
KEY FEATURES	GPS, Compact size	GPS	GPS, Low profile	GPS

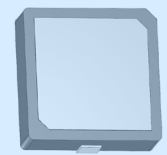
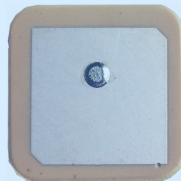


PART NUMBER	APAE1575R1840BADB1F-T	APAE1575R2040ABDD2-T	APAE1575R2520ABDD7-T	APAE1575R2540AADBE-T
TYPE	Passive Patch	Passive Patch	Passive Patch	Passive Patch
FREQUENCY (MHz)	1575.42	1575.42	1575.42	1575.42
GAIN (dBi)	3.3	-	4.3	4.5
MOUNTING	Through-hole Mount / Adhesive Tape	Through-hole Mount / Adhesive Tape	Through-hole Mount / Adhesive Tape	Through-hole Mount / Adhesive Tape
POLARIZATION	RHCP	RHCP	RHCP	RHCP
PACKAGE SIZE (mm)	18 x 18 x 4	20 x 20 x 4	25 x 25 x 2	25 x 25 x 4
KEY FEATURES	GPS	GPS	GPS, Low profile, High gain	GPS, High gain

GNSS/GPS(L1/L2/L5)/GLONASS/BEIDOU/GALILEO ANTENNAS

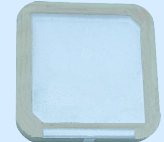
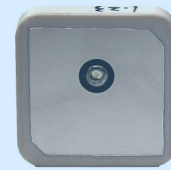
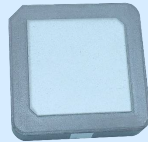


PART NUMBER	APAE1575R2540BBDB1-T	APAEA1575R0940K14-T	APAES1575R1040J34-T	APAE1590R1340AKDB2-T
TYPE	Passive Patch	Passive Patch	Passive Patch	Passive Patch
FREQUENCY (MHz)	1575.42	1606	1606	1575 1598-1606
GAIN (dBi)	4.5	-1	-2	-2
MOUNTING	Through-hole Mount / Adhesive Tape	Through-hole Mount / Adhesive Tape	Through-hole Mount / Adhesive Tape	Through-hole Mount / Adhesive Tape
POLARIZATION	RHCP	RHCP	RHCP	RHCP
PACKAGE SIZE (mm)	25 x 25 x 4	9 x 9 x 4	10 x 10 x 4	13 x 13 x 4
KEY FEATURES	GPS, High gain	GPS/GLONASS, Ultra-compact size	GPS/GLONASS, Compact size	GPS/GLONASS, Compact size

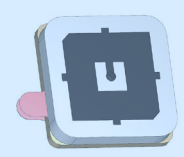
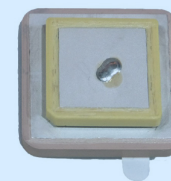
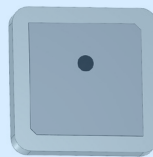
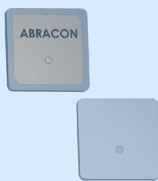


PART NUMBER	APAE1590R1350AKDB5-T	APAE1590R2540AKDB1-T	APARM1504-SG3	APAKN1304-C2G-T
TYPE	Passive Patch	Passive Patch	Passive Patch	Passive Patch
FREQUENCY (MHz)	1575 1598-1606	1575 1592-1608	1561 1575 1602	1575.42 1602
GAIN (dBi)	-2	-	-3 -4.5 0.8	2.6 2.4
MOUNTING	Through-hole Mount / Adhesive Tape	Through-hole Mount / Adhesive Tape	Through-hole Mount	Surface Mount
POLARIZATION	RHCP	RHCP	RHCP	RHCP
PACKAGE SIZE (mm)	13 x 13 x 5	25 x 25 x 4	15 x 15 x 4	13 x 13 x 4
KEY FEATURES	GPS/GLONASS, Compact size	GPS/GLONASS	GNSS, Multi-band, Low profile	GPS/GLONASS, Compact size
			New	

GNSS/GPS(L1/L2/L5)/GLONASS/BEIDOU/GALILEO ANTENNAS

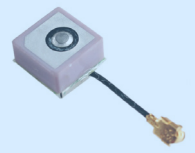
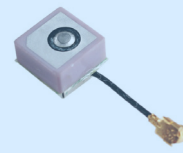
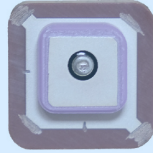
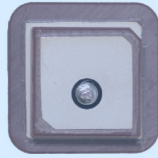


PART NUMBER	APARM1804-SG3	APAKN1804-C2G-T	APARM2504-SG3	APAKN2504-C2G-T
TYPE	Passive Patch	Passive Patch	Passive Patch	Passive Patch
FREQUENCY (MHz)	1561 1575.42 1602	1575.42 1602	1561 1575 1602	1575.42 1602
GAIN (dBi)	3 2 4	2.8 2.9	2.5 1.5 3.5	3.6
MOUNTING	Through-hole Mount	Surface Mount	Through-hole Mount	Surface Mount
POLARIZATION	RHCP	RHCP	RHCP	RHCP
PACKAGE SIZE (mm)	18 x 18 x 4	18 x 18 x 4	25.1 x 25.1 x 4	25 x 25 x 4
KEY FEATURES	GNSS, Multi-band, Compact size	GPS/GLONASS, Compact size	GNSS, Multi-band, High gain	GPS/GLONASS, High gain
			New	

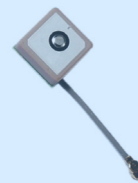
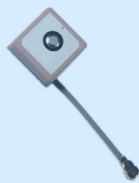
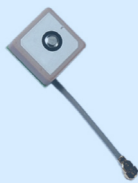


PART NUMBER	APARM3503-SG3	APAGM3606-SG3	APAKM3513-SGL2	APAKM2507S-SGL5
TYPE	Passive Patch	Passive Patch	Passive Patch	Passive Patch
FREQUENCY (MHz)	1561 1575.42 1602	1562 1575 1602	1227 1575	1575.42 1176.45
GAIN (dBi)	4.0 3.0 4.5	4	1.2 3.1	4 -3
MOUNTING	Through-hole Mount	Through-hole Mount	Through-hole Mount	Through-hole Mount
POLARIZATION	RHCP	RHCP	Circular	RHCP
PACKAGE SIZE (mm)	35 x 35 x 3	36 x 36 x 6	35.6 x 35.6 x 13.5	25 x 25 x 7.5
KEY FEATURES	GNSS, Multi-band, High gain	GNSS, Multi-band, High gain, High efficiency	GPS(L1+L2)	GPS(L1+L5), High gain
		New	New	New

GNSS/GPS(L1/L2/L5)/GLONASS/BEIDOU/GALILEO ANTENNAS

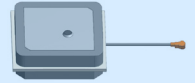
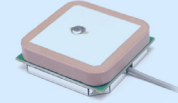
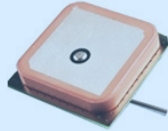


PART NUMBER	APARM2508S-SG3L5	APARM2508S-SGL2L5	APAM0968JL03V2.0	APAM1068JL01V2.0
TYPE	Passive Patch	Passive Patch	Active Patch	Active Patch
FREQUENCY (MHz)	1176 1561 1575 1577 1602	1176 1227 1575	1575.42	1575.42
GAIN (dBi)	0.5 2.4 0.6 0.6 3.4	-0.5 -0.3 3.8	-3	-2
MOUNTING	Through-hole Mount	Through-hole Mount	Connector Mount	Connector Mount
POLARIZATION	RHCP	RHCP	RHCP	RHCP
PACKAGE SIZE (mm)	25.1 x 25.1 x 8	25 x 25 x 8	9 x 9 x 6.8	10 x 10 x 6.8
KEY FEATURES	GPS(L1+L5)/GLONASS, Compact size	GPS(L1+L2+L5)/GLONASS, Compact size	GPS, Ultra-compact size, LNA gain : 18 dB, Ø0.80mm, IPEX	GPS, Compact size, LNA gain : 18 dB, Ø0.80mm, IPEX
	New	New		

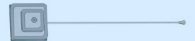
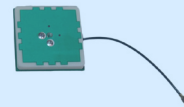
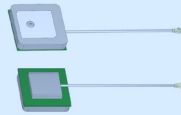
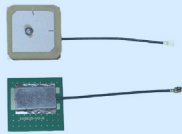


PART NUMBER	APAM1268JL02V2.0	APAM1368YB13V3.0	APAM1568YE15V2.0	APAM1866YA18
TYPE	Active Patch	Active Patch	Active Patch	Active Patch
FREQUENCY (MHz)	1575.42	1575.42	1575.42	1575.42
GAIN (dBi)	0	0	1.5	2.5
MOUNTING	Connector Mount	Connector Mount	Connector Mount	Connector Mount
POLARIZATION	RHCP	RHCP	RHCP	RHCP
PACKAGE SIZE (mm)	12 x 12 x 6.8	13 x 13 x 6.8	15 x 15 x 6.8	18 x 18 x 7
KEY FEATURES	GPS, LNA gain : 18 dB, Ø0.80mm, IPEX	GPS, LNA gain : 19 dB, Ø0.81mm, IPEX	GPS, LNA gain : 18 dB, Ø0.80mm, IPEX	GPS, LNA gain: 27 dB, Ø1.13mm, IPEX

GNSS/GPS(L1/L2/L5)/GLONASS/BEIDOU/GALILEO ANTENNAS




PART NUMBER	APAM2764YK0175	APARC1807A-SG3	APAMPGJ-141	APAGM2704A-C2G
TYPE	Active Patch	Active Patch	Active Patch	Active Patch
FREQUENCY (MHz)	1575.42	1561-1602	1575.42 1592-1610	1575.42-1601.02
GAIN (dBi)	2.5	-6.5 -6.5 -6.0	3	4.5
MOUNTING	Connector Mount	Surface Mount	Connector Mount	Surface Mount
POLARIZATION	RHCP	RHCP	RHCP	RHCP
PACKAGE SIZE (mm)	27 x 27 x 7	18 x 18 x 7.6	25 x 25 x 8.6	27 x 27 x 4
KEY FEATURES	GPS, LNA gain: 28 dB, Ø1.13mm, IPEX	GNSS, Multi-band, High gain LNA, Ø1.13mm, IPEX	GPS/GLONASS, High gain, LNA gain: 24 dB, Ø1.13mm, IPEX	GPS/GLONASS, LNA gain: 28 dB, Ø1.13mm, IPEX
		New		







PART NUMBER	APAKC2506A-SG3	APARC2504A-SG3	APAKC3508A-SG3	APARC2511X-SGL2L5
TYPE	Active Patch	Active Patch	Active Patch	Active Patch
FREQUENCY (MHz)	1555-1615	1561 1575.42 1602	1555-1615	1176.45 1227.6 1575.42
GAIN (dBi)	-1.5 -1 -2.5	-1 -2.5 -1.5	3.0 2.8 2.5 3.0	
MOUNTING	Surface Mount	Adhesive Mount	Surface Mount	Surface Mount
POLARIZATION	RHCP	RHCP	RHCP	RHCP
PACKAGE SIZE (mm)	25 x 25 x 6.9	25 x 25 x 7.4	35 x 35 x 8.7	25 x 25 x 12.4
KEY FEATURES	GNSS, Multi-band, High gain LNA : 32 dB, Ø1.13mm, IPEX II	GNSS, Multi-band, LNA gain: 18 dB, Ø1.13mm, IPEX	GNSS, Multi-band, High gain LNA : 32 dB, Ø1.13mm, IPEX II	GPS(L1+L2+L5), Compact size, High gain LNA, Ø1.13mm, IPEX(F)
	New		New	New

GNSS/GPS(L1/L2/L5)/GLONASS/BEIDOU/GALILEO ANTENNAS

				
PART NUMBER	APARC251X-SG3L5	AFAG3030-SG3	AFAG4330-SG3	APAMP-114
TYPE	Active Patch	Flexible PCB	Flexible PCB	Module
FREQUENCY (MHz)	1176 1561 1575.42 1602	1550-1620	1550-1620	1575.42
GAIN (dBi)			2	1
MOUNTING	Surface Mount	Adhesive Tape	Adhesive Mount	Adhesive Mount
POLARIZATION	RHCP	Vertical	Linear	RHCP
PACKAGE SIZE (mm)	25 x 25 x 13	30 x 30 x 0.2	40 x 10	26 x 23 x 12
KEY FEATURES	GPS(L1+L5)/GLONASS, Compact size, High gain LNA, Ø1.13mm, IPEX(F)	GNSS, Low Profile, Ultra-compact size, Ø1.13mm, IPEX	Low profile, High gain, Ø1.13mm, IPEX	GPS, LNA gain: 26 dB, RG-174, SMA-J3
	New	New	New	

				
PART NUMBER	APAMP-113	APAMP-127	APAMP-111	APAMP-125
TYPE	Module	Module	Module	Module
FREQUENCY (MHz)	1575.42	1576.44	1575.42	1576.44
GAIN (dBi)	5	5	5	5
MOUNTING	Adhesive Mount	Magnetic Mount	Adhesive Mount	Magnetic Mount
POLARIZATION	RHCP	RHCP	RHCP	RHCP
PACKAGE SIZE (mm)	38 x 34 x 12	38 x 34 x 12	38.3 x 35 x 12	38.3 x 35 x 12
KEY FEATURES	GPS, High gain, LNA gain: 28 dB, RG-174, FAKRA-C	GPS, High gain, LNA gain: 28 dB, RG-174, FAKRA-C	GPS, High gain, LNA gain: 28 dB, SMA-J3	GPS, High gain, LNA gain: 27 dB, RG-174, SMA-J3

GNSS/GPS(L1/L2/L5)/GLONASS/BEIDOU/GALILEO ANTENNAS

				
PART NUMBER	APAMP-115	APAMP-128	APAMPJ-133	APAMP-116
TYPE	Module	Module	Module	Module
FREQUENCY (MHz)	1575.42	1576.44	1575.42	1575.42
GAIN (dBi)	3.5	3.5	4	5
MOUNTING	Adhesive Mount	Magnetic Mount	Adhesive Mount	Adhesive Mount
POLARIZATION	RHCP	RHCP	RHCP	RHCP
PACKAGE SIZE (mm)	40 x 35 x 15.1	40 x 35 x 13.1	41 x 34 x 14.5	44 x 37 x 14.5
KEY FEATURES	GPS, LNA gain: 28 dB, RG-174, SMA-J3	GPS, High gain, LNA gain: 28 dB, RG-174, SMA-J3	GPS, High gain, LNA gain: 15 dB, RG-174U, MMCX(M)	GPS, High gain, LNA gain: 27 dB, RG-174, SMA-JW3

				
PART NUMBER	APAMP-129	APAMP-112	APAMP-107	APAMP-122
TYPE	Module	Module	Module	Module
FREQUENCY (MHz)	1576.44	1575.42	1575.42	1576.44
GAIN (dBi)	5	5	5	5
MOUNTING	Magnetic Mount	Adhesive Mount	Adhesive Mount	Magnetic Mount
POLARIZATION	RHCP	RHCP	RHCP	RHCP
PACKAGE SIZE (mm)	44 x 37 x 14.5	46 x 38 x 15	48.6 x 39.2 x 15.2	48.6 x 39.2 x 15.2
KEY FEATURES	GPS, LNA gain: 27 dB, RG-174, SMA-JW3	GPS, High gain, LNA gain: 27 dB, RG-174, SMA-J3	GPS, High gain, LNA gain: 27 dB, SMA-J3	GPS, High gain, LNA gain: 27 dB, SMA-J3

GNSS/GPS(L1/L2/L5)/GLONASS/BEIDOU/GALILEO ANTENNAS

				
PART NUMBER	APAMP-124	APAMP-126	APAMP-109	APAMP-123
TYPE	Module	Module	Module	Module
FREQUENCY (MHz)	1576.44	1576.44	1575.42	1576.44
GAIN (dBi)	5	5	5	5
MOUNTING	Magnetic Mount	Magnetic Mount	Adhesive Mount	Magnetic Mount
POLARIZATION	RHCP	RHCP	RHCP	RHCP
PACKAGE SIZE (mm)	49.2 x 40 x 15.2	49.2 x 40 x 15.2	50.6 x 50.6 x 15.1	50.6 x 50.6 x 15.1
KEY FEATURES	GPS, High gain, LNA gain: 29 dB, RG-174, SMA-JW3	GPS, High gain, LNA gain: 27 dB, RG-174, SMA-J3	GPS, High gain, LNA gain: 26 dB, RG-174, SMA-J3	GPS, High gain, LNA gain: 26 dB, RG-174, SMA-J3

				
PART NUMBER	APAMP-108	APAMPG-117	APAMPG-130	AEACBA045015-SG2
TYPE	Module	Module	Module	Module
FREQUENCY (MHz)	1575.42	1575.42 1594-1610	1576.44 1594-1610	1575-1602
GAIN (dBi)	5	5	5	5
MOUNTING	Adhesive Mount	Adhesive Mount	Magnetic Mount	Adhesive Mount
POLARIZATION	RHCP	RHCP	RHCP	RHCP
PACKAGE SIZE (mm)	54.5 x 44.5 x 14.8	44 x 14.5	44 x 14.5	45.2 x 35.8 x 15.2
KEY FEATURES	GPS, High gain, LNA gain: 27 dB, SMA-J3	High gain, LNA gain: 30 dB, GPS/GLONASS, SMA-J3	GPS/GLONASS, High gain, LNA gain: 30 dB, SMA-J3	GPS/GLONASS, Multi-band, IP67 rated, RG-174, SMA
				New

GNSS/GPS(L1/L2/L5)/GLONASS/BEIDOU/GALILEO ANTENNAS



PART NUMBER	AEACBD045015-SG2	AEARBA048014-SG3	AEARBD048014-SG3	AEACBA050018-SG3
TYPE	Module	Module	Module	Module
FREQUENCY (MHz)	1575-1602	1559-1610	1559-1610	1561-1602
GAIN (dBi)	5	5.78 4.27 5.65	5.78 4.27 5.65	5
MOUNTING	Magnetic Mount	Adhesive Mount	Magnetic Mount	Adhesive Mount
POLARIZATION	RHCP	RHCP	RHCP	RHCP
PACKAGE SIZE (mm)	45.2 x 35.8 x 15.2	48.5 x 47 x 14	48.5 x 47 x 14	50 x 50 x 18
KEY FEATURES	GPS/GLONASS, High gain, RG-174, SMA	GNSS, Multi-band, High gain, LNA gain: 28 dB, Ø2.7mm, SMA(M)	GPS/GLONASS, High gain, Ø2.7mm, SMA(M)	GNSS, Multi-band, High gain, LNA gain: 34 dB, RG-174, SMA(M)
	New	New	New	New



PART NUMBER	AEACBD050018-SG3	AEACBA050018-SG4L2L5	AEACMK0660746-SG4	AEAGMK148060-S1575
TYPE	Module	Puck	Dome	Dome
FREQUENCY (MHz)	1561-1602	1561-1602 1176-1227	1561-1602	1164-1300 1559-1615
GAIN (dBi)	5	3	5	4.5
MOUNTING	Magnetic Mount	Adhesive / Magnetic Mount	Screw Mount	Screw Mount
POLARIZATION	RHCP	RHCP	RHCP	RHCP
PACKAGE SIZE (mm)	50 x 50 x 18	50 x 50 x 18	Ø66.5 x x 76	Ø148 x 60
KEY FEATURES	GNSS, Multi-band, IP67 rated, RG-174, SMA	GPS(L1+L2+L5)/GLONASS, Multi-band, IP67 rated, RG-174, SMA	GNSS, Multi-band, Ultra-High gain, IP67 rated, TNC	GNSS, Multi-band, High gain, IP66 rated, TNC-K
	New	New	New	



RFID READER ANTENNAS

Abracon offers patch antennas for ultra-high frequency (UHF) RFID applications in 868 MHz (Europe) or 915 MHz (USA). These patch antennas come in assorted sizes, featuring circular polarization and high-gain performance with directional patterns. Our high performing reader antennas feature easy installation and come tuned to the ground plane, allowing the RFID reader systems to meet the read range specified with each tag.

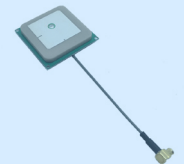
APPLICATIONS

- Logistics
- Industrial Automation
- Manufacturing
- Inventory Management
- Smart Cards
- Field Mobility
- Pharmaceutical
- Asset Management
- Transportation

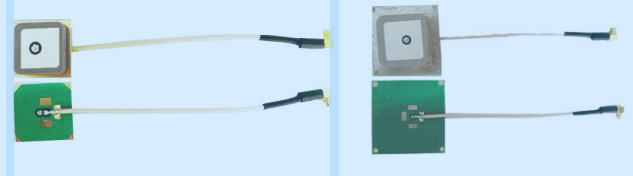
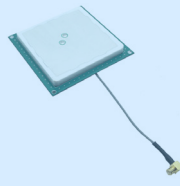
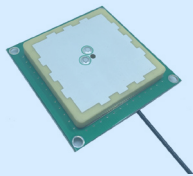


PART NUMBER	APAE868R2540JBDB2-T	APAE915R2540ABDB1-T	APAES923R3640C16-T	APAES923R4560C16-T
TYPE	Passive Patch	Passive Patch	Passive Patch	Passive Patch
FREQUENCY (MHz)	868	915	923	923
GAIN (dBi)	-1.37	-	1.5	2.5
MOUNTING	Through-hole Mount / Adhesive Tape	Through-hole Mount / Adhesive Tape	Through-hole Mount / Adhesive Tape	Through-hole Mount / Adhesive Tape
POLARIZATION	RHCP	RHCP	RHCP	RHCP
PACKAGE SIZE (mm)	25 x 25 x 4	25 x 25 x 4	36 x 36 x 4	45 x 45 x 6
KEY FEATURES	Compact size	Compact size		

RFID READER ANTENNAS

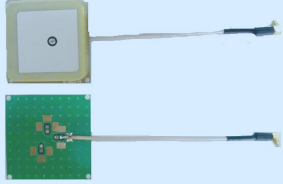
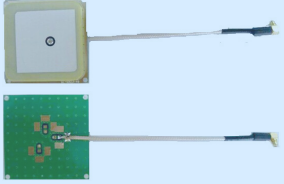
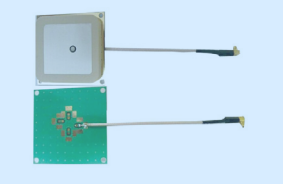
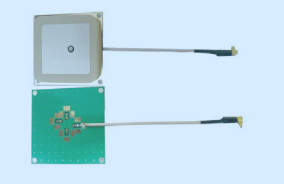


PART NUMBER	APAES915R6460C16-T	APAES868R8060C16-T	APAES915R80C16-T	ARRKP4065-S915A
TYPE	Passive Patch	Passive Patch	Passive Patch	Passive Patch
FREQUENCY (MHz)	915	868	915	915
GAIN (dBi)	3.5	5	5	1.5
MOUNTING	Through-hole Mount / Adhesive Tape	Through-hole Mount / Adhesive Tape	Through-hole Mount / Adhesive Tape	Through-hole Mount
POLARIZATION	RHCP	RHCP	RHCP	RHCP
PACKAGE SIZE (mm)	62.5 x 62.5 x 6	80 x 80 x 6	80 x 80 x 6	40 x 40 x 6.5
KEY FEATURES		High gain	High gain	Built-in ground plane, Ø1.13mm, IPEX



PART NUMBER	ARRKP5062-S915B	ARRKP7059-S915B	ARRCN5-915.000MHz	ARRAN5-915.000MHz
TYPE	Passive Patch	Passive Patch	Passive Patch	Passive Patch
FREQUENCY (MHz)	915	915	915-918	915-918
GAIN (dBi)	3	4	-5	0.5
MOUNTING	Through-hole Mount	Through-hole Mount	Connector Mount	Connector Mount
POLARIZATION	RHCP	RHCP	RHCP	RHCP
PACKAGE SIZE (mm)	50 x 50 x 6.2	70 x 70 x 5.9	20.5 x 20.5 x 7.8	35 x 35 x 8.2
KEY FEATURES	Built-in ground plane, RG-178, MMCX-JW	High gain, Built-in ground plane, RG-178, MMCX-JW	Built-in ground plane, Compact size, RG-178, MMCX-JW3, LPWA/ISM	Built-in ground plane, RG-178, MMCX-JW3

RFID READER ANTENNAS

				
PART NUMBER	ARRNR5-868.000MHz	ARRRN5-915.000MHz	ARRSN5-868.000MHz	ARRSN5-915.000MHz
TYPE	Passive Patch	Passive Patch	Passive Patch	Passive Patch
FREQUENCY (MHz)	868-871	915-918	868-871	915-918
GAIN (dBi)	1.5	1.5	2.5	2.5
MOUNTING	Connector Mount	Connector Mount	Connector Mount	Connector Mount
POLARIZATION	RHCP	RHCP	RHCP	RHCP
PACKAGE SIZE (mm)	40 x 40 x 8	40 x 40 x 8	50 x 50 x 9.4	50 x 50 x 9.4
KEY FEATURES	Built-in ground plane, RG-178, MMCX-JW3	Built-in ground plane, RG-178, MMCX-JW3	Built-in ground plane, RG-178, MMCX-JW3	Built-in ground plane, RG-178, MMCX-JW3

				
PART NUMBER	ARRTN5-868.000MHz	ARRTN5-915.000MHz	ARRUN5-868.000MHz	ARRUN5-915.000MHz
TYPE	Passive Patch	Passive Patch	Passive Patch	Passive Patch
FREQUENCY (MHz)	868-871	915-918	868-871	915-918
GAIN (dBi)	3.5	3.5	5.5	5.5
MOUNTING	Connector Mount	Connector Mount	Connector Mount	Connector Mount
POLARIZATION	RHCP	RHCP	RHCP	RHCP
PACKAGE SIZE (mm)	65 x 65 x 9.2	65 x 65 x 9.2	120 x 120 x 9.5	120 x 120 x 9.5
KEY FEATURES	Built-in ground plane, RG-178, MMCX-JW3	Built-in ground plane, RG-178, MMCX-JW3	High gain, Built-in ground plane, RG-178, MMCX-JW3	High gain, Built-in ground plane, RG-178, MMCX-JW3

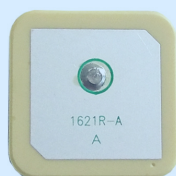


SATELLITE COMMUNICATIONS ANTENNAS

Abracon offers patch and external antennas for satellite communications compatible with Iridium or Satellite Digital Audio Radio Services (SDARS). Our antennas feature high gain, low profile and right-hand circular polarization to maximize sensitivity in compact applications. Abracon also offers optimization for customer-specific devices, making them compatible with the most popular satellite radio services and Iridium communication systems.

APPLICATIONS

- Fleet Tracking
- Asset Tracking
- Personal Tracking
- Handheld Devices
- Satellite Telephony
- Utility Monitoring
- Automotive
- Satellite Radios

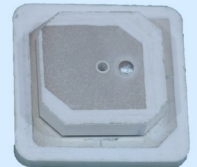
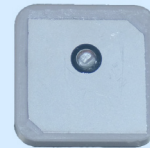
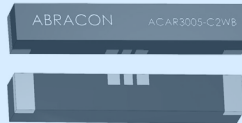
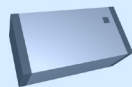


PART NUMBER	APAE1621R2540ABDD1-T	APAE2338L2540DDDB1-T	AEARBD040038-S1621	AEACBD045015-S2332
TYPE	Passive Patch	Passive Patch	Module	Module
FREQUENCY (MHz)	1621-1624	2338	1616-1626.5	2320-2345
GAIN (dBi)	4	5	0.46	3
MOUNTING	Through-hole Mount / Adhesive Tape	Through-hole Mount / Adhesive Tape	Magnetic Mount	Magnetic Mount
POLARIZATION	RHCP	LHCP	RHCP	Circular
PACKAGE SIZE (mm)	25 x 25 x 4	25 x 25 x 4	40.5 x 38 x 12.3	45.2 x 35.8 x 15.1
KEY FEATURES	Low profile, High gain, Iridium	Low profile, High gain, SDARS	RG-174, SMA, Iridium	IP67 rated, High gain LNA, SDARS
			New	New

COMBINATION ANTENNAS

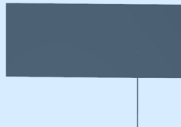


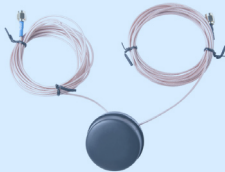
Abracon offers combo antenna solutions in diverse types, from compact SMD chip to heavy duty external antennas with 2-in-1, 3-in-1, 5-in-1 and 6-in-1 protocol support. Our antennas feature IP67 rating for weather resistance to rugged environments.

These high efficiency antennas integrate 4G/LTE/3G/2G/GSM, GNSS/GPS(L1/L5)/GLONASS/BeiDou/Galileo, dual-band WiFi and AM/FM bands for next-generation devices, offering long range connectivity and easy integration for IoT and machine-to-machine (M2M) applications. High data rates, throughputs and quality of service (QoS) can be achieved with our MIMO offerings for cellular and WiFi bands.



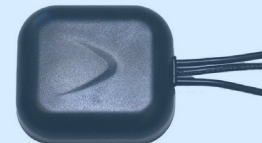
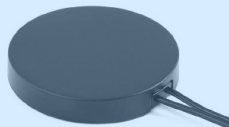
PART NUMBER	ACAG0301-15752450-T	ACAR3005-C2WB	APARM2504-C2GR	APAKM4012-C2G3D
TYPE	Chip	Chip	Passive Patch	Passive Patch
FREQUENCY (MHz)	1575 2450	824-960 2400-2500	1575 1610-1625	1561-1602 2320-2345
GAIN (dBi)	1.21 3.18	2.61	2 3	2.7 4
MOUNTING	Surface Mount	Surface Mount	Through-hole Mount	Through-hole Mount
POLARIZATION	Linear	Linear	RHCP	RHCP LHCP
PACKAGE SIZE (mm)	3.2 x 1.6 x 1.2	30 x 5 x 5	25.1 x 25.1 x 4	40 x 40 x 12.2
KEY FEATURES	WiFi + GPS, Compact size	WiFi+ LPWA/NB-IoT/Sub-GHz Cellular	GPS + Iridium	GNSS + SDARS, High gain
			New	New

COMBINATION ANTENNAS

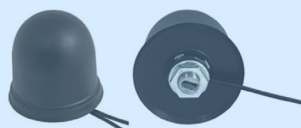
				
PART NUMBER	AFAC120050-U6G	APAMPSLJ-140	APAMSTJ-138	AEACBK046014-C2WG
TYPE	Flexible PCB	Blade	Blade	Puck
FREQUENCY (MHz)	698-6000	1559-1606 699-960 1710-2690	380-500 824-894 868 900 1800 1900 2100 2400	1575.42 2400-2483.5 4800-5825
GAIN (dBi)	5	5	2.2	0 2
MOUNTING	Adhesive Mount	Connector Mount	Glass Mount	Connector Mount
POLARIZATION	Linear	Linear	Linear	RHCP Linear
PACKAGE SIZE (mm)	120 x 50 x 0.2	196 x 38 x 13.8	126.5 x 22 x 6.7	Ø46.6 x 14.5
KEY FEATURES	UWB + 4G/LTE + Dual-band WiFi + GNSS, High gain, Ø1.37mm, IPEX	4G/LTE + WiFi + GNSS, SMA(M)	2G/3G/GSM + WiFi + TETRA, RG-174, SMA(M)	GNSS + Dual WiFi, IP67 Rated, LNA gain : 20dB, RG-178, SMA
	New			

				
PART NUMBER	AEACBA081016-C2LG	AEACBD081016-C2LG	APAMPS-105	APAMPS-106
TYPE	Puck	Puck	Puck	Puck
FREQUENCY (MHz)	1575.42 698-960 1710-2690	1575.42 698-960 1710-2690	1575.42 806-960 1710-1880	1575.42 806-960 1710-1880
GAIN (dBi)	2.0 2.5	2.0 2.38	5 -1 1	5 -1 1
MOUNTING	Adhesive Mount	Magnetic Mount	Adhesive Mount	Screw Mount / Adhesive Tape
POLARIZATION	RHCP Linear	RHCP Linear	RHCP Linear	RHCP Linear
PACKAGE SIZE (mm)	Ø81.6 x 16.2	Ø81.6 x 16.2	Ø76.8 x 15.5	Ø75 x 14.1
KEY FEATURES	4G/LTE + GPS, IP67 Rated, High gain LNA, 2xRG174, 2xSMA(M)	4G/LTE + GPS, IP67 Rated, High gain LNA, 2xRG-174, 2xSMA(M)	2G/3G/GSM + GPS, High gain LNA, RF Cable, SMA-J3 + FME-J3	2G/3G/GSM + GPS, High gain LNA, RF Cable, SMA-J3

COMBINATION ANTENNAS



PART NUMBER	APAMSJ-147	AEACBK050048-C2LG	AEACBA059015-C3GSW	AEACBD059015-C3GSW
TYPE	Puck	Dome	Module	Module
FREQUENCY (MHz)	850-900 824-960 1700-2100 1575.42 1592-1610	1575.42 698-960 1710-2690	1575.42 824-960 1710-2170 2400-2483.5	1575.42 824-960 1710-2170
GAIN (dBi)	1.5 0.5	2	2 3	2 2
MOUNTING	Adhesive Mount	Screw Mount	Adhesive Mount	Magnetic Mount
POLARIZATION	Linear Linear Linear RHCP RHCP	RHCP Linear	RHCP Linear	Linear
PACKAGE SIZE (mm)	Ø77.0 x 12	Ø50 x 48	52 x 59 x 15	52 x 59 x 15
KEY FEATURES	2G/3G/GSM + GNSS, IP67 Rated, High gain LNA, 2xRG174U, 2xSMA(M)	4G/LTE + GPS, IP66 Rated, High gain LNA, 2xRG174, 2xSMA(M)	2G/3G/GSM + WiFi + CPS, High gain LNA, 3xRG-174, 3xSMA(M)	2G/3G/GSM + WiFi + CPS, High gain LNA, 3xRG-174, 3xSMA(M)



PART NUMBER	APAMPSBJ-144	APAMPSLJ-142	AEACBK110053-MLWG	AEACBK189085-MLWFGL5
TYPE	Dome	Module	Dome MIMO	Dome
FREQUENCY (MHz)	791-960 1710-2960 850 900 1800 1900 2100 2400 1572-1610	1572-1610 380-500 824-894 880-960 1710-1880 1850- 1990 1920-2170 2400-2497	1575.42-1610 698-960 1710- 2690 2400-2483.5 4900- 5825	76-108 520-1629 698-960 1710-2690 2900-3800 1575 1176 2400-2483 4900-5925
GAIN (dBi)	2	2.2 2 2	3.0 2.0	1 8 4 4
MOUNTING	Body Mount	Body Mount	Screw Mount	Screw Mount
POLARIZATION	Linear RHCP	RHCP	RHCP Linear Linear	RHCP
PACKAGE SIZE (mm)	Ø77.3 x 66.5	92 x 52 x 157	Ø110 x 53	189 x 182 x 85
KEY FEATURES	4G/LTE + WiFi + GNSS, IP67 Rated, LNA Gain: 23 dB, 2xRG174U, 2xSMA(M)	2G/3G/GSM + WiFi + GNSS + TETRA, 2xRG174 + 1xRG58, 1xFME(F) + 2xSMA(M)	2x4G/LTE MIMO + 2xWiFi MIMO + GNSS, IP67 Rated, 5xRG-174, 5xSMA(M)	2x4G/LTE MIMO + GPS(L1,L5) + Dual WiFi + AM/FM, High gain, 5xRG-174, 4 SMA(M)+1 DIN

New

ANTENNA APPLICATION NOTE

PCB TRACE VS. CHIP ANTENNA DESIGN CONSIDERATIONS

OVERVIEW

Abracon's recent antenna application note provides essential information for designing chip and PCB trace antennas into a PCB design. The application note provides implementation guidelines and associated challenges for both chip and PCB trace antennas. Roshni Prasad, an associate RF engineer at Abracon, explores the cost versus benefit trade-offs to consider when selecting which antenna type to use for an application.

PCB Trace vs. Chip Antenna Design Considerations Application Note

The modern urban environment poses a challenge to high-speed designs involving Cellular, GNSS, WiFi/Bluetooth/BLE/ZigBee and LPWA protocols: the reflection, refraction, scattering, diffraction, polarization and absorption of signals necessitates highly efficient RF chains. Of all components in the chain, the antenna has the key role in establishing wireless connectivity.

A PCB trace antenna is given serious consideration when attempting to reduce the overall system cost; however, chip antennas offer better overall performance in terms of size selectivity and efficiency in most cases. The following information outlines the attributes of both chip and PCB trace antennas. It also covers the design considerations required in selecting the right type of antenna to implement in your design.

How do you implement a chip antenna into a design?

Several factors contribute to the performance and radiation characteristics while designing a chip antenna onto a PCB: the PCB size, the PCB layout, the ground/clearance space dimensions, the tuned matching circuit, the RF shielding and the housing. When implementing an off-the-shelf chip into a design, closely follow the reference layout design to avoid any de-tuning or performance variation.

Abracon's chip antennas utilize dielectric and LTCC multilayer technology, creating quarter-wave monopole structures to serve as compact and lightweight solutions. The chip antennas provide an optimal convergence in size, cost and performance. The range of form factors vary as a function of gain and operating bandwidth....

TO READ THE FULL APPLICATION NOTE, VISIT ABRACON.COM

ANTENNA WHITE PAPER

ANTENNA IMPEDANCE MATCHING

Why is impedance matching required?

An antenna's performance is affected by the environment such as its proximity to other components or to the enclosure. The antenna must be impedance matched and tuned to the right center frequency when assembled for the end-user environment so that it operates in the desired frequency band with maximum efficiency. Optimal efficiency results in maximum range, minimum power consumption, reduced heating and reliable data throughput.

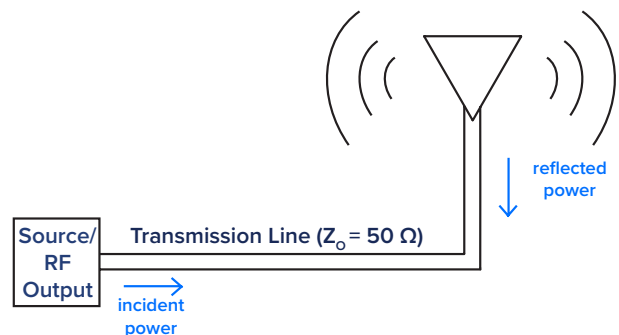
What is impedance matching?

Impedance matching is the process of designing the antenna's input impedance or matching it to the corresponding RF circuitry's output impedance, which is $50\ \Omega$ in most cases. If the impedance of the line feeding the antenna and the antenna impedance do not match, then the source experiences complex impedance, which would be a function of the line length. Matching on the final board is crucial because antenna impedance can be altered depending on the electrical properties, size and proximity of the adjacent objects mounted on the end product, any enclosures, etc.

Impedance matching is achieved by designing a matching network, which is a circuit between the feed line and the antenna. A Smith chart is an excellent graphical aid for visualizing the impedance at the input of the antenna. A Smith chart can be used to determine matching network's lumped element values. By adjusting the reactance values in the matching network, impedance can be brought to the center of the chart, which corresponds to a pure resistance of $50\ \Omega$.

What is so important about impedance matching?

Despite being a complicated procedure requiring testing and validation, antenna optimization is essential in all RF designs. Without proper matching and tuning, the antenna becomes a choke point of performance due to reduced range, increased power consumption and poor transmission quality. Recent advancements in Internet of Things and smart applications demand highly efficient and reliable antenna systems.



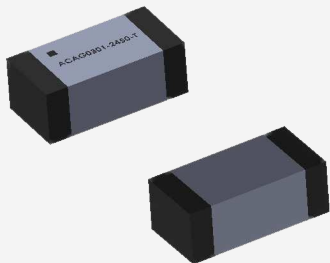
Abracon offers an Antenna Optimization Service for customers wanting to maximize the performance of the antenna in their application. For more information about the optimization service, please see page 38 or contact the Abracon sales team for further information.

To read the full white paper, visit abracon.com

ANTENNA OPTIMIZATION SERVICE

OVERVIEW

OBTAIN OPTIMAL POWER, GAIN AND RANGE



Abracon offers in-system tuning services for patch and chip antennas. By characterizing the antenna performance in the end system or product, this service takes the guess work out of RF verification while offering corrective measures that re-tune the system for center frequency and impedance mismatch. This provides maximum system efficiency delivering many benefits including, extended RF range, improved sensitivity and can reduce the required power consumption for a given level of transmit range.



Abracon Antenna Optimization Service



Copy link



LEARN MORE AT
ABRACON.COM



ANTENNA OPTIMIZATION SERVICE

APPLICABLE PART NUMBERS

5G/4G/LTE			
ACAR3705-S698		ACAR4008-S698	
2G/3G/GSM			
ACAR3005-S824			
WIFI/BLUETOOTH/BLE/ZIGBEE/ISM			
ACAG0201-2450-T	AMCA31-2R450G-S1F-T	ACAG0801-2450-T	AMCA72-2R470G-S1F-T
ACAG0301-2450-T	ACAG0301-5500-T	ACAR0301-SW2	ACAG0301-24505500-T
APARN1204-S2450	APAKN1304-S2450-T	APAKN2504-S2448-T	APAKN1304-S5517-T
APARC2505-S2450			
LPWA/LORA/SIGFOX/NB-IOT/ISM			
ACAG1204-433-T	ACAG1204-868-T	ACAG1204-915-T	ACAR3705-SB
APAE868R2540JBDB2-T	APAE915R2540ABDB1-T	APAES923R3640C16-T	APAES923R4560C16-T
APAES915R6460C16-T	APAES915R80C16-T	APAES868R8060C16-T	
GNSS			
ACAG0301-1575-T	ACAR0301-SG3	APAKN0904-S1575-T	APAE1575R1240ABDD1-T
APAE1575R1340ABDD6-T	APAE1575R1540AZDB2F-T	APAE1575R1820ABDC1-T	APAE1575R1840AADB7-T
APAE1575R1840BADB1F-T	APAE1575R2040ABDD2-T	APAE1575R2520ABDD7-T	APAE1575R2540AADBE-T
APAE1575R2540BBDB1-T	APAEA1575R0940K14-T	APAES1575R1040J34-T	APAE1590R1340AKDB2-T
APAE1590R1350AKDB5-T	APAE1590R2540AKDB1-T	APARM1504-SG3	APARM1804-SG3
APARM2504-SG3	APARM3503-SG3	APAGM3606-SG3	APAKN1304-C2G-T
APAKN1804-C2G-T	APAKN2504-C2G-T	APAKM3513-SGL2	APAKM2507S-SGL5
APARM2508S-SG3L5		APARM2508S-SGL2L5	
SATELLITE COMMUNICATIONS			
APAE1621R2540ABDD1-T		APAE2338L2540DDDB1-T	
RFID READER ANTENNAS			
APAE868R2540JBDB2-T	APAE915R2540ABDB1-T	APAES923R3640C16-T	APAES923R4560C16-T
APAES915R6460C16-T	APAES868R8060C16-T	APAES915R80C16-T	
COMBINATION ANTENNAS			
ACAG0301-15752450-T	ACAR3005-C2WB	APARM2504-C2GR	APAKM4012-C2G3D

FOR MORE ANTENNA OPTIMIZATION SERVICE INFO, VISIT ABRACON.COM

CONTACT

General Inquiries

ablinfo@abracon.com

Technical Support

tech-support@abracon.com

PR and Media Inquiries

marketing@abracon.com



[Linkedin.com/company/abracon/](https://www.linkedin.com/company/abracon/)



[@Abracon](https://twitter.com/Abracon)



[Facebook.com/AbraconGlobal](https://www.facebook.com/AbraconGlobal)



LOCATED GLOBALLY

Australia | Canada | China | Germany | Hong Kong | Hungary | India | Israel | Italy | Korea
Malaysia | Mexico | New Zealand | Nordics | Taiwan | United Kingdom | United States

CORPORATE HEADQUARTERS

5101 Hidden Creek Ln
Spicewood, TX 78669
Phone: 512.371.6159

CALIFORNIA OFFICE

24422 Avenida de la Carlota
Suite 290
Laguna Hills, CA 92653

SHENZHEN OFFICE

A507, T-share Jinniu Square,
Taoyuan Road, Nanshan District,
Shenzhen, Guangdong Province, China

NEVADA OFFICE

5458 Louie Lane
Reno, NV 89511

HONG KONG WAREHOUSE

Unit C, 10/F, Gateway ts,
No. 8 Cheung Fai Road
Tsing Yi, N.T. HK

LEARN MORE AT
ABRACON.COM