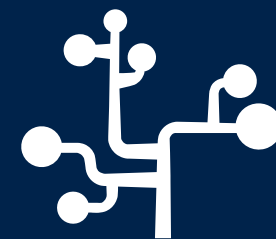




life.augmented

**Discover the M24256E-F**

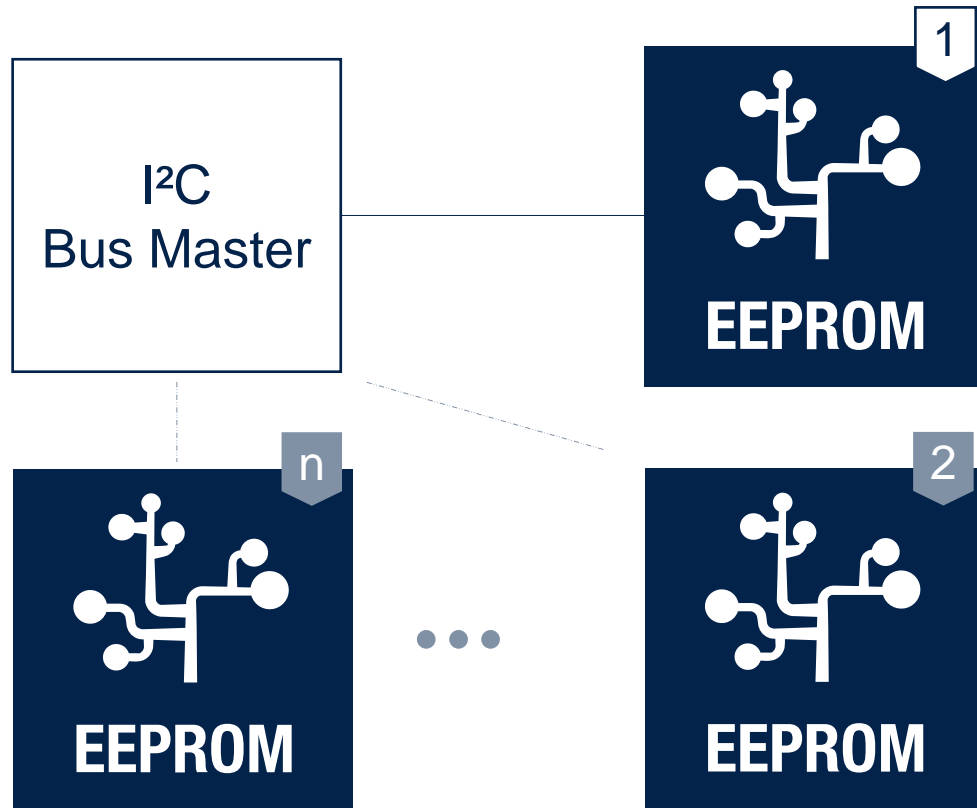
**The 256Kbit I<sup>2</sup>C EEPROM in SO8N  
from new process**



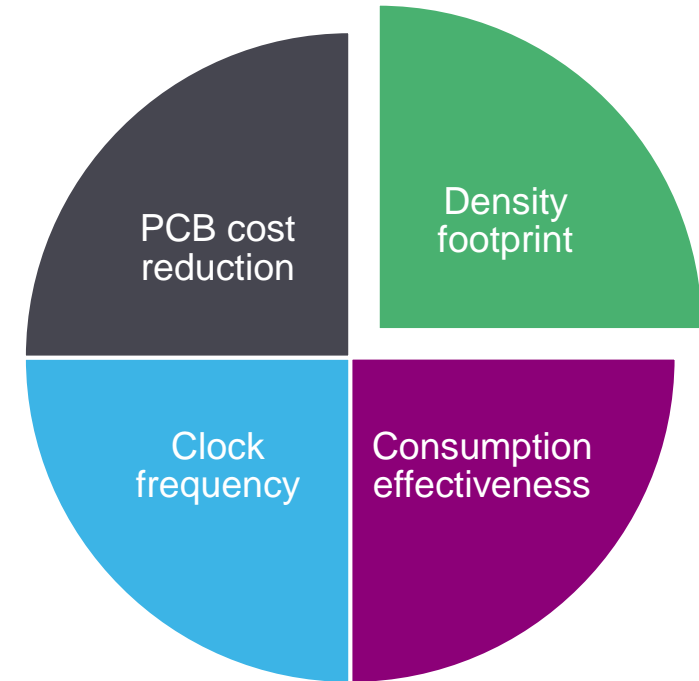
**EEPROM**

# Two main new features

## 1. Multiple EEPROMs on same bus

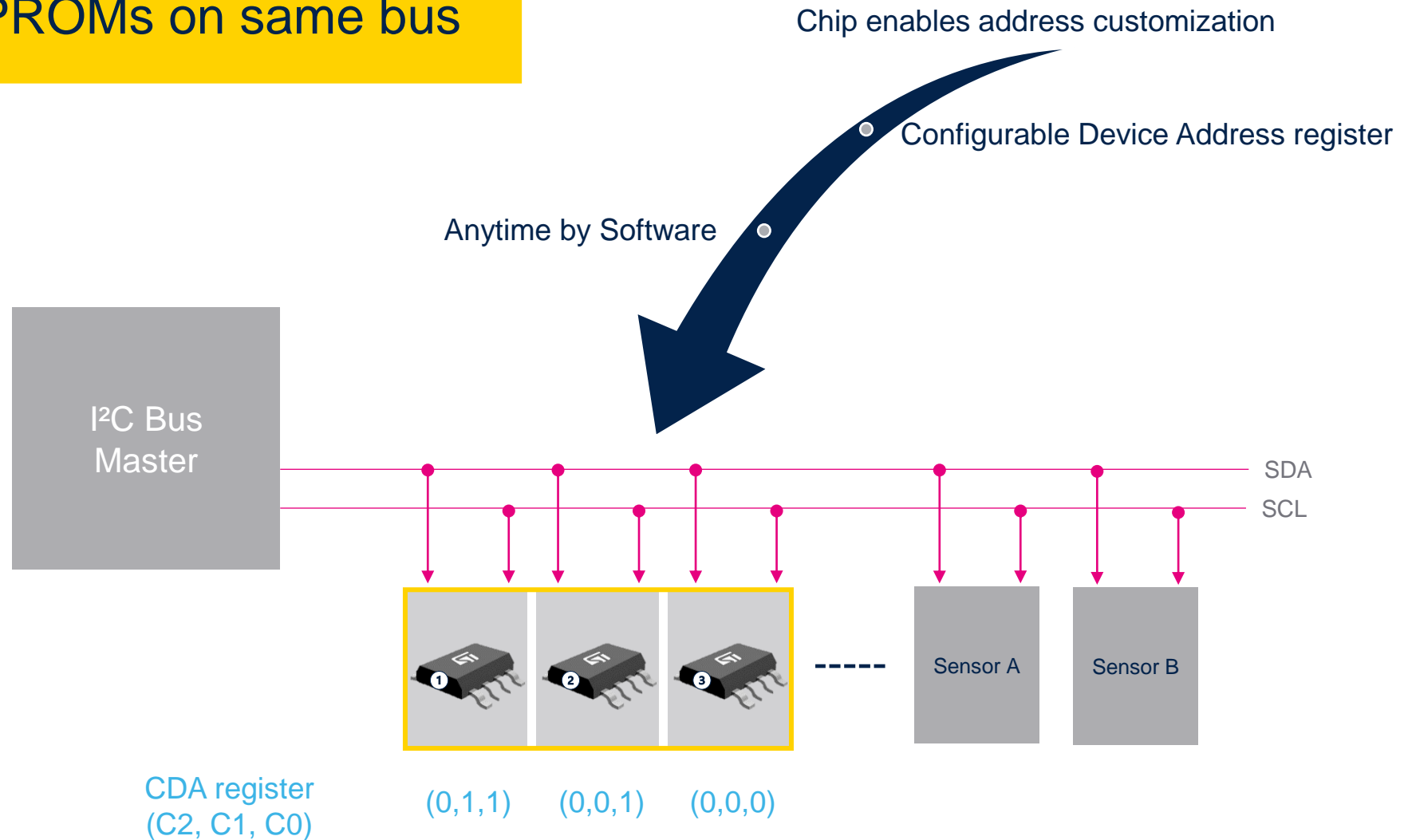


## 2. Enhanced technology process



# Configurable device address

## 1. Multiple EEPROMs on same bus



# New customer offer

## 2. Enhanced technology process

**Pins reduction**

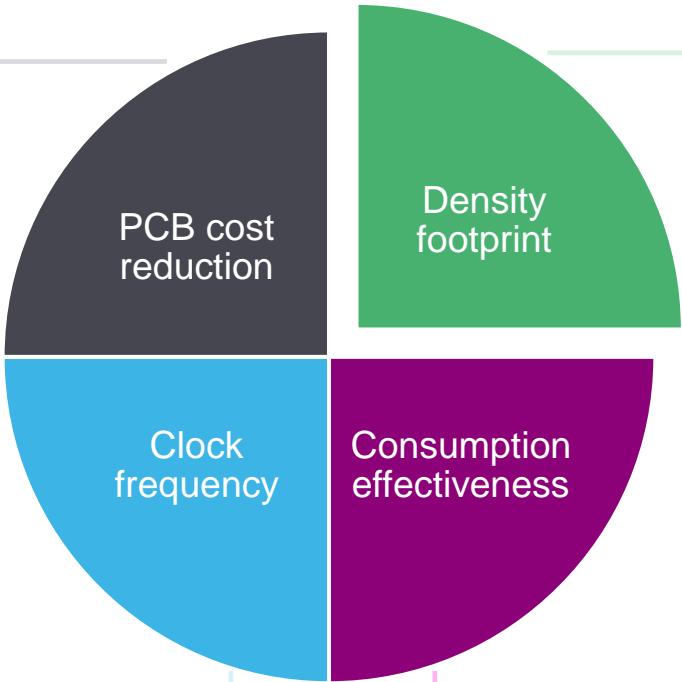
5 pins instead of 8

\$

**Up to 1MHz**


Fast wake up

Fast communication



**Design enhanced**

For low power consumption



**Availability**

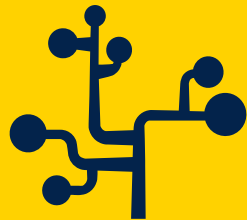
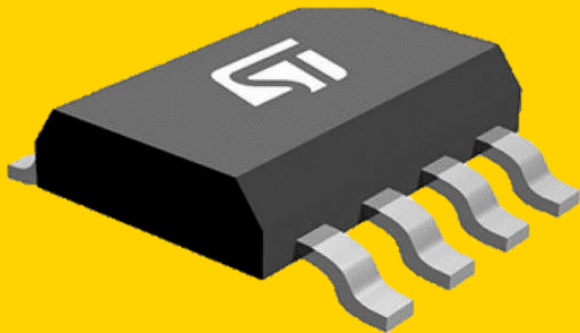
Increased number of dies per wafer



# Key features

## Fast wake-up & communication, low supply

SO8N package



EEPROM

Configurable Device Address register

Software Device Address register

- 256Kbit memory organized as 32Kbytes
- SO8N JEDEC package **4.9 x 6 mm**
- **Fast-mode Plus** (1MHz) across **1.6 V to 5.5 V**
- Temperature range -40°C up to +85°C
- 64 bytes per page
- 5ms for byte and page write
- **4 Million** write cycles at 25°C
- **200-year** data retention
- ESD HBM **4000V**

# Where you find the M24256E-F typical applications

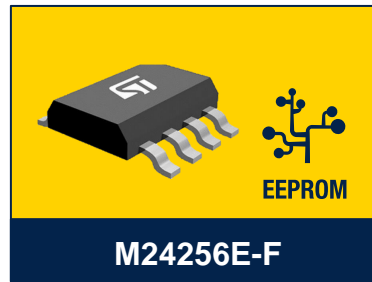
eMetering



Industrial



Printers



# Additional resources

 Find out more on [M24256E-F product page](#) and apply for samples

 Download the [datasheet](#)

# Our technology starts with You



Find out more at [www.st.com/eeprom](http://www.st.com/eeprom)

© STMicroelectronics - All rights reserved.

ST logo is a trademark or a registered trademark of STMicroelectronics International NV or its affiliates in the EU and/or other countries.

For additional information about ST trademarks, please refer to [www.st.com/trademarks](http://www.st.com/trademarks).

All other product or service names are the property of their respective owners.



life.augmented