

## Datamate T-Contact Female Power Contact for 2mm Pitch Hi-Rel

Pushing the boundaries on signal connectors

Harwin combines field proven Datamate J-Tek connectors with the T-Contact to extend the boundaries of power capacity with signal connector technology.

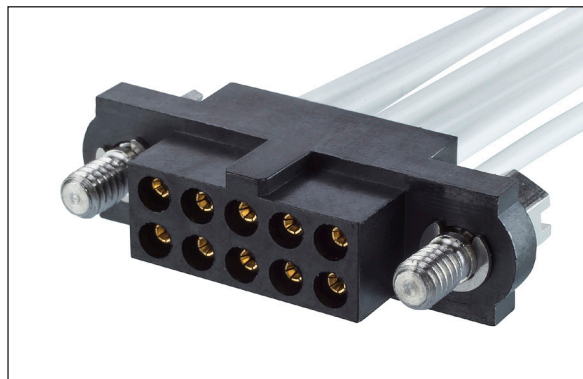
Recognising a distinct trend towards increased power, the T-Contact uses a patented, 6-finger design to deliver up to 8.5A per contact. It is machined from a single piece of Beryllium Copper, and gold plated to provide reliable performance in demanding applications.

Cable housings are stocked in depth in selected sizes from 4 to 50 position, to provide fast delivery and greater flexibility. Compatible with all male J-Tek connectors, and no increase in size over 3A signal connectors.



Up to 8.5A female barrel crimp contact

Features and Benefits	
Up to 8.5A per contact	Allows for increased current capacity on a 2mm pitch system improving the Datamate SWaP (Size, weight and power) Ratio
Increased number of mating cycles, up to 1000 operations	Extended operating life of connectors when compared to existing contact system
60% more contact wipe when compared to existing signal contacts	Improves contact self-cleaning action and helps reduce surface contamination
Patented 6-finger contact design	Provides more contact points to improve resistance to shock and vibration
Dedicated stocked range of dual row mouldings with hardware	Fast turn around on off-the-shelf options with a range of hardware for design flexibility
T-Contact is compatible with existing Datamate connectors, replacing the existing female signal crimps	Can be used in Mix-Tek, J-Tek, and L-Tek product ranges where female barrel crimp contacts are currently used - no change to male connectors required
Heavy Gold plating	0.76-1.00µm (30-40µ") Gold plating to meet US Military and Avionics requirements



Fits all existing female signal crimp housings

Key Applications	
Aviation	Avionics controls, Engines, Radar, UAVs, In-flight systems
Motorsport and Transport	Navigation, GPS tracking systems, sensors, communications, telemetry
Energy	Oil, gas and renewable sources
Industrial	Drives and controls, robotics, motors
Space	Satellites, CubeSat, launch systems, radar and communications
Defence and Security	Power control modules, routers, radio communications, radar, actuators, camera systems



Suitable for 22AWG cable

Patent Pending

[www.harwin.com/t-contact](http://www.harwin.com/t-contact)



## Product Features

Crimp barrel accepts 22AWG wire and meet IPC-A-620 specifications

Heavy Gold plating, 0.76-1.00 $\mu$ m (30-40 $\mu$ "") to meet US Military/Avionics requirements

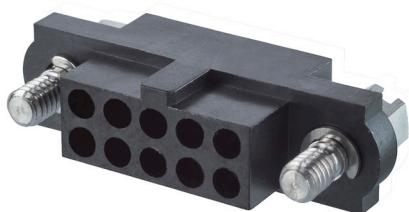
Up to 8.5 Amps per contact rating on 2mm pitch

Extended operating durability of 1000 mating cycles

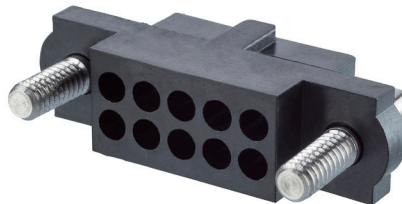
Contact retention features are the same as existing Datamate female crimp contacts

Patented 6-finger contact design improves resistance to shock (100G) and vibration (40G 6 hours, 2 hours per axis)

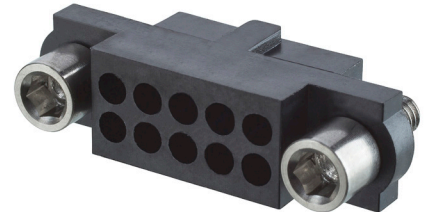
60% increased contact wipe to improve self-cleaning action and reduce surface contamination



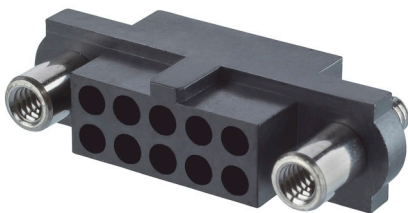
**M80-413xx98**  
Hex slotted jackscrew



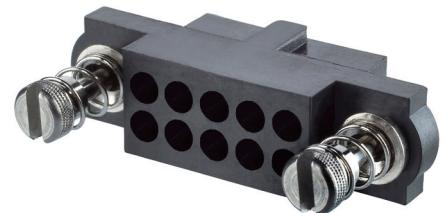
**M80-417xx98**  
Guide pin with panel mount



**M80-414xx98**  
Hex socket jackscrew



**M80-415xx98**  
Reverse fix jackscrew



**M80-418xx98**  
101Lok

## How to Order

T-Contact sold in 100 pcs per bag



**ORDER CODE**

**M80-2060005**

## Housings

**M80 - 4 - XX - XX - 98**

**SERIES CODE**

**NO. OF CONTACT POSITIONS**

04 to 50 (Even numbers only)

### JACKSCREW FIXING STYLE

<b>13</b>	Hexagon Slotted jackscrews
<b>14</b>	2mm A/F Hex socket jackscrews
<b>15</b>	Reverse fix jackscrews with 3.5mm panel mount stud
<b>17</b>	Guide pin with 5mm panel mount stud
<b>18</b>	101Lok quarter-turn fixings

### Panel Mount Nuts



M80-2130000B

M80-2430000B

## Specifications

Electrical		Mechanical & Environmental		Physical	
Current Rating	8.5A max individual (at 25°C ambient, 3.5A max when all contacts electrically loaded)	No. of Operations	1000	Packaging (contact)	100 per bag
Working Voltage	800V AC/DC	Insertion Force	4N per contact	Housing	30% GF PPS, UL94V-0, black
Maximum Voltage	1200V AC/DC	Withdrawal Force	0.8N per contact	Contacts	Beryllium Copper, Gold over nickel finish
Contact Resistance	25mΩ Max	Operating Temperature Range	-55°C to +125°C	Jackscrews, Circlips	Stainless steel
Insulation Resistance	10 <sup>6</sup> MΩ	Vibration	40G for 6 hours, 2 hours per axis	Recommended Wire	22AWG, PTFE insulation
		Shock	100G for 6ms		

Patent Pending

[www.harwin.com/t-contact](http://www.harwin.com/t-contact)



**Harwin Europe (Global Headquarters)**

Portsmouth, Hampshire, UK

E: [mis@harwin.co.uk](mailto:mis@harwin.co.uk)

T: +44 (0)23 9231 4545

**Harwin Inc (Americas)**

New Albany, Indiana, USA

E: [mis@harwin.com](mailto:mis@harwin.com)

T: +1 603 893 5376

**Harwin Asia Pte Ltd (Asia, Australasia)**

Singapore

E: [mis@harwinasia.com](mailto:mis@harwinasia.com)

T: +65 6 779 4909