

Datamate Metal Backshells Wire-to-Board connector accessories

Connector enhancement and new build solutions

Datamate Metal Backshells are designed to provide EMI / RFI screening. The female cable versions include attachment features for screening braid, providing strain relief and mechanical protection for additional performance improvements.

These fully machined metal backshells are made from aluminium alloy with electroless nickel plating. They suit most applications, and offer significant cost savings over comparable Micro-D options.



Metal Backshell applied to J-Tek female crimp connector



J-Tek Male panel mount crimp connector



Coax Mix-Tek Female cable connector

Features and Benefits

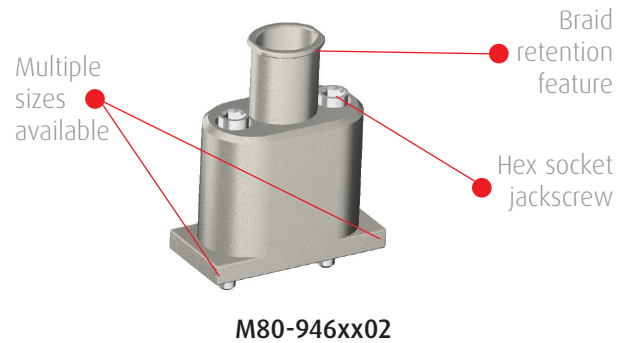
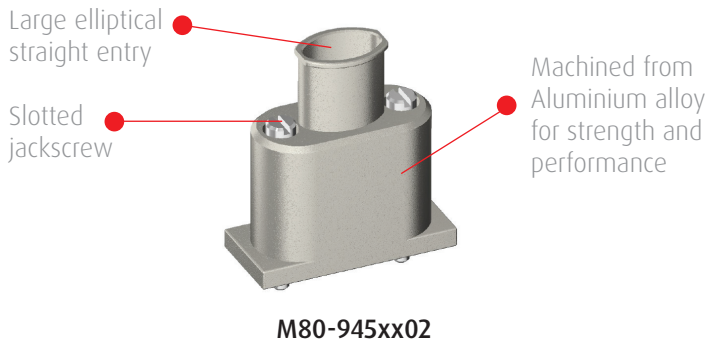
Cable-to-board and panel mount options	Wide range of products to support a broad spectrum of customers and applications
Datamate Metal backshells are machined from aluminium alloy billets	This construction ensures reliability, strength and performance
Can be used with J-Tek or Mix-Tek Datamate Connectors	Sold as accessories to further enhance connector performance levels
Made-to-order	Low MOQ's and fast turnaround
Single large elliptical straight cable entry port for cable connectors	Accepts signal, coax and power cable for varied requirements
Braid retention feature at cable entrance	Suitable for metallic and non-metallic conductive braids
Overall screen termination by stainless steel micro-band	Ensures electrical and mechanical longevity and security

Key Applications

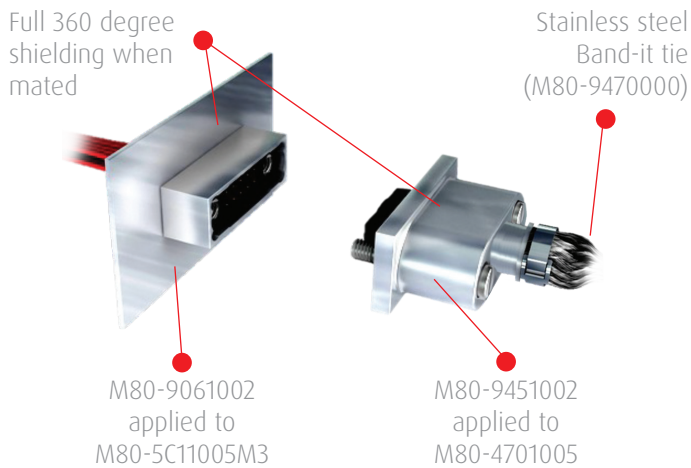
Aviation	Avionics, Aircraft Infotainment, Radar
Motorsport and Transport	Navigation, GPS, Tracking
Energy	Oil, Gas and Renewable Sources
Industrial	Drives and Controls, Robotics
Space	Satellites, CubeSat, Launch Systems, Radar and Communications
Defence and Security	Wi-Fi Antennas, Routers, Radio Communications and Radar

Product Features

Datamate Metal Backshells for J-Tek and Mix-Tek female cable connectors



Typical wire-to-panel configuration



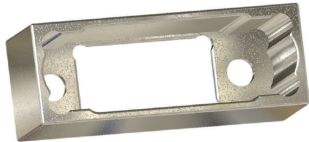
J-Tek and Mix-Tek male crimp cable and PCB connectors



Specifications

Electrical	Mechanical		Physical	
RF Attenuation = 10kHz to 400MHz @ >30dBs in general accordance with MIL STD 1377 (1971). Tests were performed when connectors were mated.	No. of Operations	500	Packaging	M80-94xxx02 = 1 kit per bag
	Temperature Range	-55°C to +125°C		M80-906xx02 = 1 shell per bag
	Refer to partnered connector for other electrical specifications	Circlip Tool	Z80-300	Backshells
Jackscrews				Stainless steel
Circlips				Stainless steel
			Band-it Tie	Stainless steel, sold separately

Backshells for male PCB and cable connectors, with board/panel mount fixings



M80-906xx02

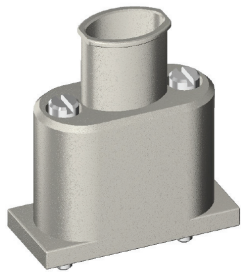
Micro-band



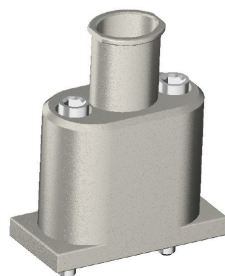
Order Code	Length
M80-9470000	206.8mm
M80-9480000	362.0mm

For fixing braid to rear collar.
(requires Tie Dex II A30199 Micro Band tool).

Backshells for female cable connectors



M80-945xx02
Slotted Jackscrew Kit



M80-946xx02
Hex Socket Jackscrew Kit

How to Order

Female Part No	Male Part No	No. of signal contacts (J-Tek)	No. of power/coax contacts (Mix-Tek)
M80-94x0802	M80-9060802	8	2
M80-94x1002	M80-9061002	10	-
M80-94x1202	M80-9061202	12	3
M80-94x1402	M80-9061402	14	-
M80-94x1602	M80-9061602	16	4
M80-94x1802	M80-9061802	18	-
M80-94x2002	M80-9062002	20	5
M80-94x2202	M80-9062202	22	-
M80-94x2402	M80-9062402	24	6
M80-94x2602	M80-9062602	26	-
M80-94x2802	M80-9062802	28	7
M80-94x3202	M80-9063202	32	8
M80-94x3402	M80-9063402	34	-
M80-94x3602	M80-9063602	36	9
M80-94x3802	M80-9063802	38	-
M80-94x4002	M80-9064002	40	10
M80-94x4202	M80-9064202	42	-
M80-94x4402	M80-9064402	44	11
M80-94x4602	M80-9064602	46	-
M80-94x4802	M80-9064802	48	12
M80-94x5002	M80-9065002	50	-



Harwin Europe (Global Headquarters)

Portsmouth, Hampshire, UK

E: mis@harwin.co.uk

T: +44 (0)23 9231 4545

Harwin Inc (Americas)

New Albany, Indiana, USA

E: mis@harwin.com

T: +1 603 893 5376

Harwin Asia Pte Ltd (Asia, Australasia)

Singapore

E: mis@harwinasia.com

T: +65 6 779 4909