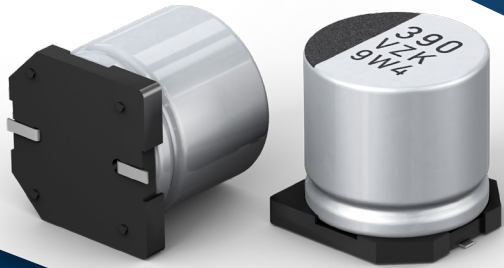


Conductive Polymer Hybrid Aluminum Electrolytic Capacitors ZKU Series

Panasonic
INDUSTRY



Setting industry standards with large capacitance range

Hybrid capacitor's ZKU Series is a further step in miniaturization of components, e.g. $\varnothing 10 \times L 10.2 \text{mm}$ to $\varnothing 8 \times L 10.2 \text{mm}$ at the same capacitance level. In addition to smaller space requirements, ZKU offers a high endurance rating of 4000 hours @ 125°C and large capacitance values of 39 μF up to 560 μF . The high capacitance characteristics in miniaturized body can reduce the number of required capacitors on the PCB. Adoption of ZKU series in EPS application decreases the PCB area by 25% when compared to other Hybrid capacitors on the market. Being AEC-Q200 compliant ensures optimal quality and reliability.

**in conductive polymer hybrid aluminum electrolytic capacitors category as of April 2020 according to Panasonic research.*

Key Features

- Large capacitance, 39 μF up to 560 μF
- Endurance rating 4000 hours @ 125°C
- Operating temperature -55 to +125°C
- Rated voltage 25VDC / 35VDC
- Low ESR, down to 20m Ω
- High ripple current, up to 2.8Arms
- AEC-Q200 compliant
- 30g vibration proof types available ($\varphi 6.3$ and larger)



Automotive

- Electrical control unit (ECU)
- Pump
- EPS



Industrial

- Robot
- E-bike
- AC/DC, DC/DC power supply



Infrastructure & Energy

- Base station
- Server
- Control for Inverter power generation



For further Information, please contact capacitor@eu.panasonic.com