



698-960, 1710-2170 & 2300-2700 MHz LTE/Cell BAND ANTENNA

Standard Antenna Solutions

LTE, US Dual, EU Triband and WCDMA product

Part Number: 2108994-1

PRODUCT FACTS:

- Small and lightweight
- Available in Tape & Reel for Automatic mounting

- RoHS compliant

RECOMMENDATIONS:

- Minimum matching circuits required
- Bandwidth and performance is dependent on ground plane size

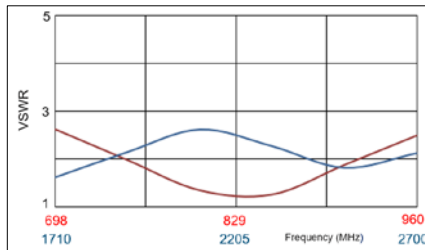
The following data was measured with 140mm ground size.

*PCB ground is to be on tops layer.

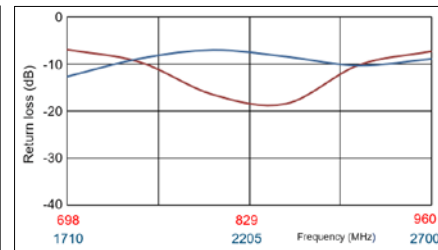
SPECIFICATIONS:

- Frequency Range: 698 - 960 MHz; 1710 - 2170 MHz, 2300 - 2700 MHz
- Peak Gain:
 - 0.7 dBi @ 710 MHz
 - 0.9 dBi @ 824 MHz
 - 1.1 dBi @ 925 MHz
 - 2.3 dBi @ 1755 MHz
 - 2.2 dBi @ 1880 MHz,
 - 0.7 dBi @ 2170 MHz
 - 1.3 dBi @ 2500 MHz
- VSWR: < 3.0
- Return loss: < -7.0 dB
- Polarization: Linear
- Power Handling: 3 Watt cw
- Size: 40.0 mm x 10.0 mm x 3.2 mm
- Weight: 2.5g
- Keep Out Area: See diagram on page 3
- Mounting: Surface-mount technology
- Operating temperature: -40° ~ +85°C
- Storage Temp: -40 ~ +85°C

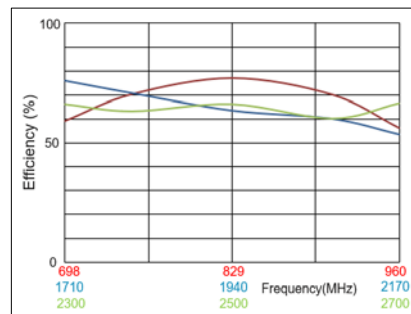
VSWR:



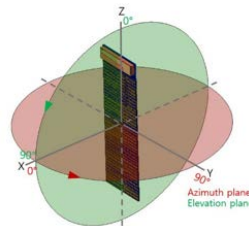
Return Loss:



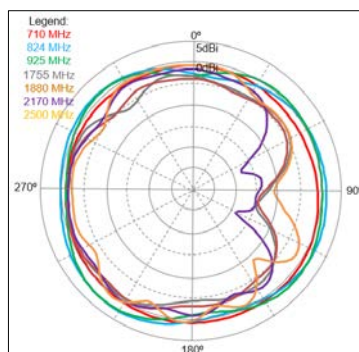
EFFICIENCY:



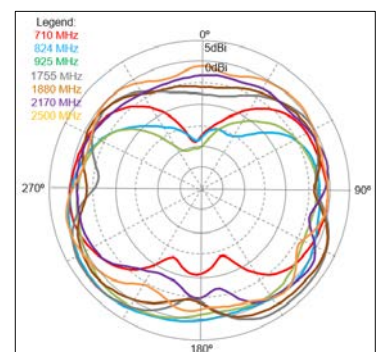
Test Orientation in Free Space



Azimuth



Elevation





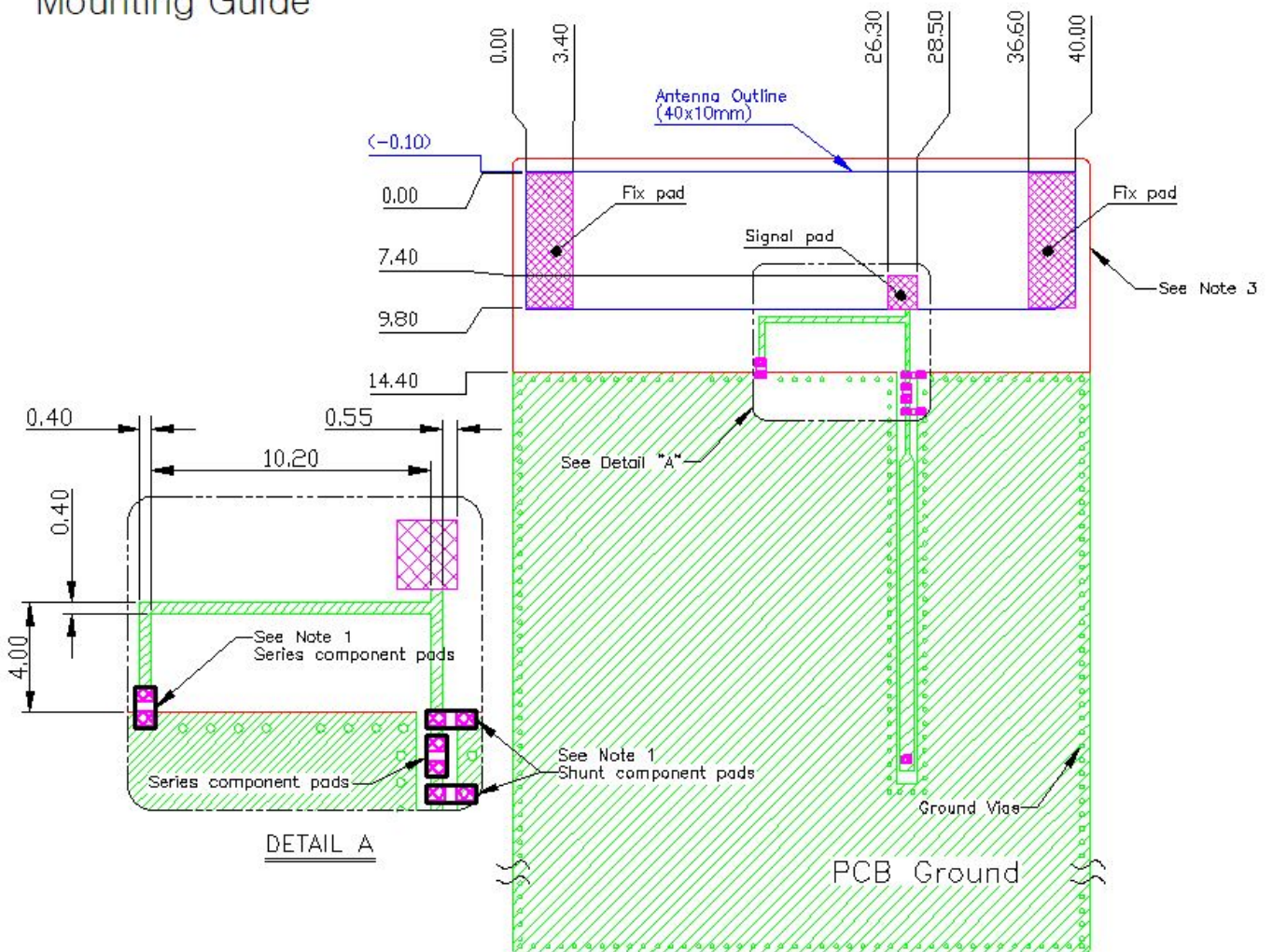
698-960, 1710-2170 & 2300-2700 MHz LTE/Cell BAND ANTENNA

Standard Antenna Solutions

LTE, US Dual, EU Triband and WCDMA product

Part Number: 2108994-1

Mounting Guide



- NOTES: 1. Suggested matching component pads.
 2. Antenna must be mounted on the edge of PCB.
 3. No copper allowed in designated area on all PCB layer -
 4. For more information please call TE.

Dimensions: mm
 Diagram is not to scale



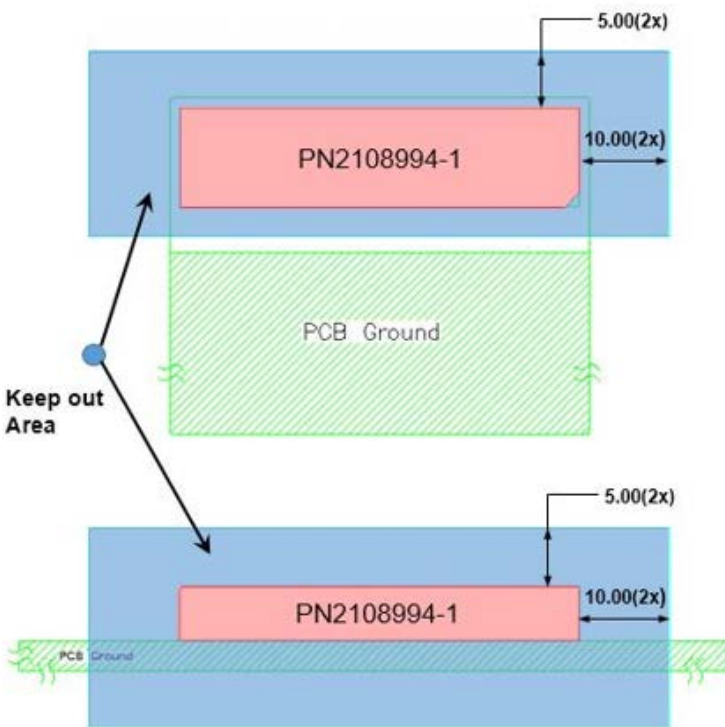
698-960, 1710-2170 & 2300-2700 MHz LTE/Cell BAND ANTENNA

Standard Antenna Solutions

LTE, US Dual, EU Triband and WCDMA product

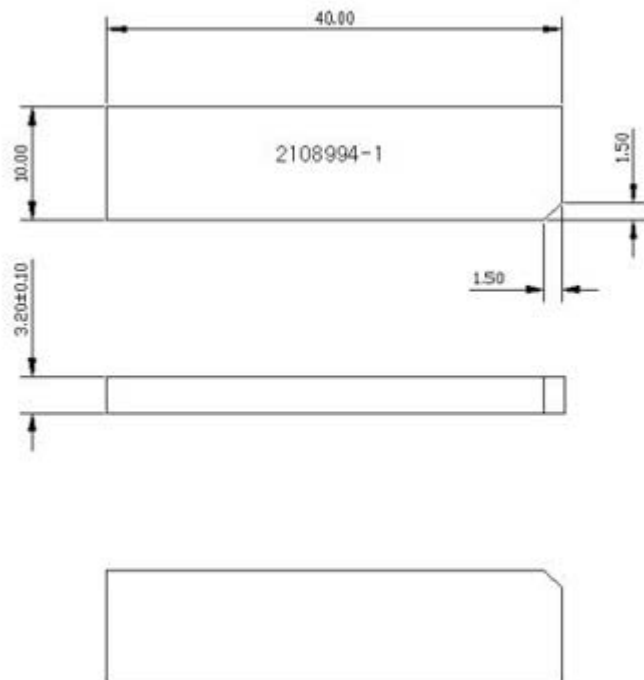
Part Number: 2108994-1

Keep Out Area



Dimensions: mm
Diagram is not to scale

Approx. Dimensions



Dimensions: mm
Diagram is not to scale