

INDUSTRIAL ETHERNET CONNECTOR BENCHMARK

Reliability comparison of RJ45 and Mini I/O

by: Peter D. Jaeger, Principal, Industrial COMM & power
Wijnand van Gils, Principal, Industrial COMM & power

SUMMARY

Industrial IoT developments ask for smaller and more reliable connectors. Latency requirements will call for higher connection reliability in environmentally severe industrial applications with vibrations.

Even for industrial IP20 applications the default connector of choice is typically the RJ45, which is originally not designed for this type of use.

This white paper compares Ethernet connector systems on connection reliability in industrial IP20 applications (Finger/Object protection $\geq 12.5\text{mm}$, no water ingress protection). Specific tests sequences have been used to measure performance of 2 Ethernet connector systems.

A variety of connectors has been tested:

- RJ45 and Mini I/O
- Pierce, solder and field installable versions
- 5 different manufacturers

Results show that Mini I/O solder supports requirements beyond existing IEC standards.

Introduction

New developments in industrial IoT / Industrie 4.0 increase the amount of sensor and actuator connections and ask for smaller connector envelopes, while the connection reliability requirements increase, because of lower latency needs.

In industrial IP20 applications RJ45 connectors are used even though the interface was originally designed for unshielded telephone wiring by using pierce contacts. The RJ45 connector interface is known to be not the most stable and reliable electrical connection in corrosive environments with vibrations and humidity.

The Mini I/O connector system is a perfect candidate for Industrial Ethernet, with a mating face envelope of only 25% of the size of an RJ45 Jack.

As a starting point for this benchmark the requirements per IEC 60603-7-X where used. To compare the performance of

connector systems, it is not sufficient to test if certain specification criteria can be met. E.g. IEC 60603-7-3 requires a mixed flowing gas test of only 4 days, a vibration requirement of 50 m/s^2 (approx. 5 g) and no requirements regarding shocks/bumps. Standards for industrial connectors include test sequences that demonstrate their suitability for such environments. For example, ISO/IEC 11801-1 describes the "MICE" environmental classes - MICE stands for Mechanical, Ingress (Degree of Protection), Climatic & Chemical and Electromagnetic, for example, the M₃ environmental class requires a shock/bump of 250m/s^2 .

The load level of a single test can be increased, but various *test combinations* are required to produce a stress that meets the actual conditions in industrial applications. Vibration levels can be easily increased, but wear and corrosion can only be induced by combining durability (mating cycles), environmental stress (mixed flow gas, MFG), high temperature, and vibration in one test sequence. This will give you better insight of the performance of a contact system in harsh environments.

IEC 60603-7 specifies a test to check for discontinuities during vibration that provide a pass or fail. For our performance comparison, we have defined an alternative test that counts the number of short discontinuities during vibration.

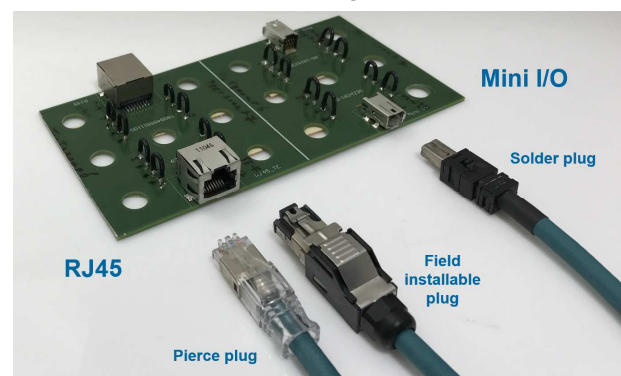


Fig. 1. Example of the different types of tested Ethernet connectors.

INDUSTRIAL ETHERNET CONNECTOR BENCHMARK

Reliability comparison of RJ45 and Mini I/O

A. The RJ45 connector system

Commonly referred to as "RJ45", the physical connector is standardized as the 8P8C modular connector per IEC60603-7, ANSI/TIA-1096-A and ISO-8877 standards. Wired to the T568A and T568B pinouts specified in the TIA/EIA-568 standard, the RJ45 is compatible with both telephone and Ethernet. The RJ45 is a modular connector that was originally designed for use in telephone wiring. Modular connectors were described in the Registration Interface system in the USA. This was mandated by the Federal Communications Commission (FCC) in 1976 in which they became known as Registered Jacks. The piercing contact used in the RJ45 is the only known principle to reliably connect to tinsel wire, as used in fixed phone coil cords. The modular design made it perfectly suitable for termination to **flat cable** of various widths. For flat cable the termination speed is still unsurpassed, because all conductors are pierced in one step, and a double cable strain relief is also provided. Unfortunately, the wiring scheme of T567B requires a cross-over of the wires of the **round cable**, making the termination far less straight forward.

During the past decades, the RJ45 has proven its versatility [1] and is nowadays even used in industrial environments by additional shielding and rugged enclosures.

B. The Mini I/O connector system

Originally designed for industrial applications, the Mini I/O was developed to be smaller and more reliable compared to the RJ45. The mating interface envelope reduction was realized by choosing fully enclosed metal shells, which take up the forces, provide tight tolerances and mating interface stability. By using additional multiple solder pads and additional hole anchor pegs, it can withstand 98 N of pull force according product specification, while still being true SMD pick & place. Using a hermaphroditic contact layout, both plug and receptacle contacts have spring action and 2 independent contact points, also known as the "fighting snake contacts". As the originator, TE Connectivity obtained IEC standardization of Mini I/O for speeds up to 1 Gbps in 2017 [2]. AMPHENOL / FCI is also supplying this connector system.

Methods and results

A. Test samples used

The connectors are terminated to a common industrial grade Cat 5e cable, having 26AWG [0.13 mm²] wires. The RJ45 receptacles are right angle SMD type Jacks, except for one through hole reflow type. The RJ45 Plugs are pierce or field installable type. All connector brands are tested in pairs; plug and jack are of the same brand, except one pair. For Mini I/O right angle receptacles, SMD version with Type 2 keying were mated to solder version plugs.

After the preparation of the lead assemblies, several poor RJ45 pierce terminations ($R_{total} - R_{bulk} > 20 \text{ m}\Omega$) were found immediately at the initial LLCR measurements in the lab. The regular termination quality check with an electrical continuity tool did not reveal these defects. Investigation showed that wire insertion depth and/or load bar depth is very critical to making good pierce terminations. For all RJ45 pierce brands, care must be taken to guarantee correct wire insertion depth when pressing the wire manager into the connector, but some brands are very critical on this aspect.

B. Contact physics analysis

The RJ45 and Mini I/O contact systems are based on gold over Nickel plating. A comparison is given in fig. 2.

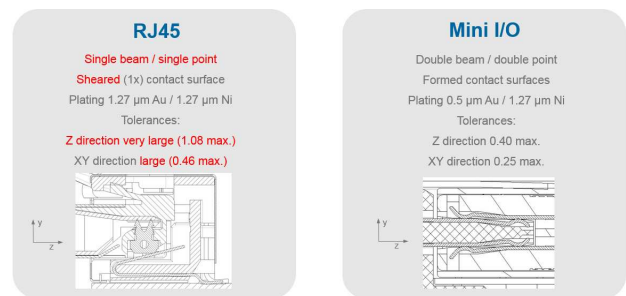


Fig. 2. Comparison of 2 Ethernet connector systems with cross sections of mating interface.

Key differences of influence on connection stability per connector type are:

The RJ45 layout:

1. Contact point stability: The dimensions and tolerances enforced by the IEC 60603 series allow for very large movements of the contact point (worst case up to 1.08 mm in mating direction) and contact normal force variations.
2. Single contact point: contact systems with only a single beam / contact point can be very stable [3], but in combination with poor contact point stability induced wear, not having redundancy from parallel contact points shows resistance fluctuations directly. Especially when mating cycle wear is followed by environmental stressing.
3. Shear edge connection: The stamping direction of the piercing contact will create a sheared edge on the contact mating surface. Some RJ45 plug contact surfaces are smoothed.
4. Wire termination pierce contact principle: during piercing the tool presses on the contact surface, inducing the risk of deforming or damaging the surface.

INDUSTRIAL ETHERNET CONNECTOR BENCHMARK

Reliability comparison of RJ45 and Mini I/O

The Mini I/O layout:

1. Contact point stability; the contact point tolerance chain is well controlled. The metal shells allow tighter tolerances and provide more rigidity.
2. In the solder version plug and the SMD receptacle, both contacts have smooth rolled surfaces.
3. The layout is more complex and requires an elastic spring material on plug and receptacle side.

C. Performance & Reliability investigation

Test groups were defined for specific performance areas. Each group consists of 4 mated pairs, thus 32 signal contact measurements per group.

Mechanical / vibration / durability

Two test groups were defined after 375 mating cycles and, either a humidity (21 cycles of -10/25/65°C) or MFG (4 gasses / 21 days) test, was followed by temperature-life and vibration test up to 25g.

The target was to induce environmental stressing after wear, so differences between the contact systems could be found without testing too mild or destroying all connections. The increase in Low Level Contact Resistance (Δ LLCR) was one of the outcomes. Initially all signal connections are OK (< 20 mΩ), but large static resistance increases (>300 mΩ) could already be observed after the first 375 mating cycles.

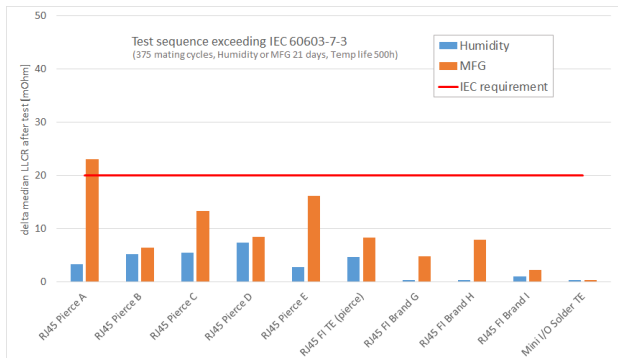


Fig. 3. Increase in signal contact LLCR after mating cycles, environmental stressing and vibration.

In the vibration test, the number of short discontinuities is counted as a measure of the stability of the contact performance. For this purpose, a specific test setup is created, which counts the number of discontinuities of more than 20 ns during a vibration test of two hours.

The results of this discontinuity check is given in fig. 4. All connectors show discontinuities, but when discontinuities are

counted, a connection quality rating can be given by the total number of discontinuities.

This value provides a better understanding of the connector stability in industrial applications.

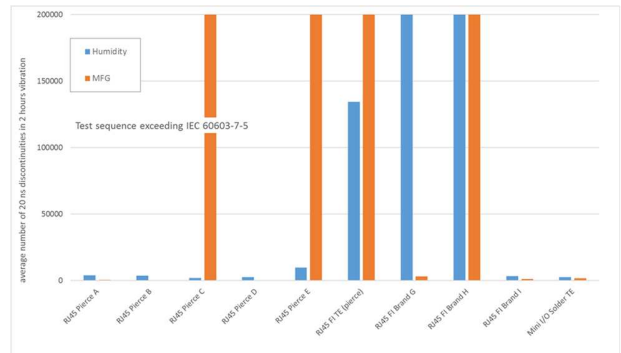


Fig. 4. 20 ns Discontinuities after mating cycles / environmental stressing during vibration, 8 signal contacts in series.

Dielectric Withstanding Voltage (DWV)

To find the voltage limits of the connector systems, 2 mated pairs of each group were tested until flashover destroyed the connector. All samples passed IEC requirements with a safety margin of 500 V minimum as is shown in Fig. 5.

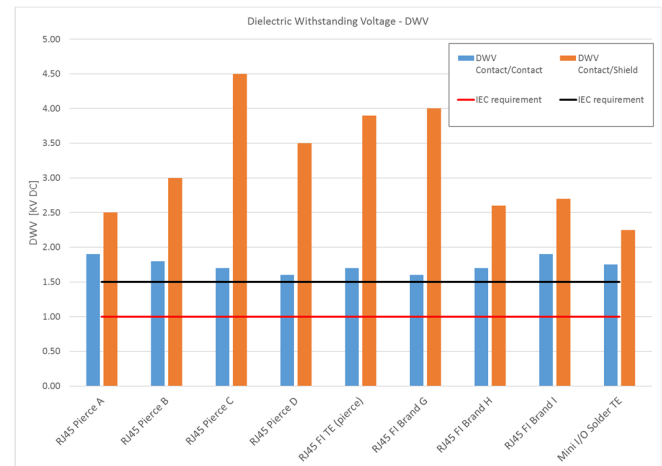


Fig. 5. Dielectric Withstanding Voltage – test until failure.

INDUSTRIAL ETHERNET CONNECTOR BENCHMARK

Reliability comparison of RJ45 and Mini I/O

EMI

In the EMI measurements is chosen for the screening attenuation for comparison, to show the EMI performance of the connectors. Measurements are made in an triaxial cell according IEC 62153-4-15. In Fig. 6 the results are given.

As can be seen, the screening attenuation of the Mini I/O is significantly better than the RJ45 versions. This applies up to a frequency of up to 125MHz, which is the frequency range of interest for data rates up to 1Gbps. For the frequency range above 125MHz the performance is still one of the best.

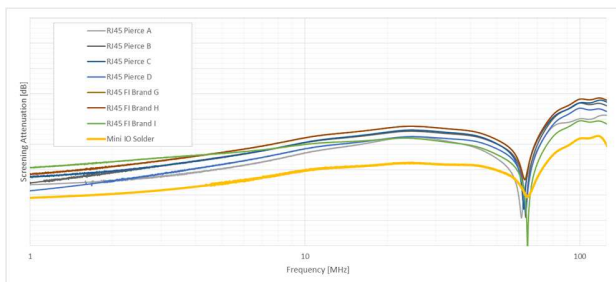


Fig. 6. EMI results

Contact Physics: Normal force & resistance

3 consecutive deflections of virgin parts showed normal repeatable characteristics for normal force and resistance vs. deflection. Low and stable initial resistances typical for gold are found for all connectors.

An additional cable movement test was added to investigate interface stability further. This cable movement test shows some resemblance to the automotive LV-214-2 “slow motion bending test”, and monitors the resistance when moving the cable lateral and axial at 100 mm distance from the mating interface. This induces contact point relative motions within the connector interface limits. The influence on the resistance can be seen in Fig. 8.

The mini I/O solder plug combination is the most stable.

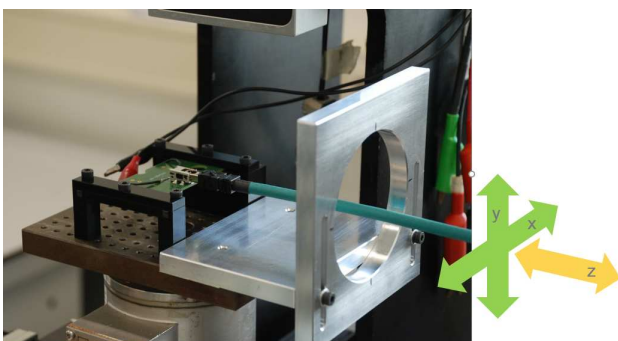


Fig. 7. Cable movement test set-up

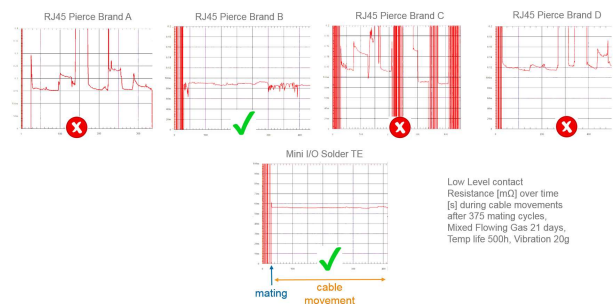


Fig. 8. LLCR during cable movement, test sequence exceeding IEC 60603-7-3.

Conclusion

In the broad benchmark described, test combinations and severity are used exceeding the IEC 60603-7-3. Mini I/O solder performed best on several key performance criteria, which are critical for usage in industrial applications:

Short discontinuities during vibration: Low due to a stable mechanical interface and double spring / double contact point layout.

Resistance during cable movement: Very stable flat resistance line during interface motions after environmental stress tests.

EMI: Screening attenuation of the Mini I/O is significantly better compared to all other RJ45 connectors.

These benefits come on top of the other advantages of using Mini-I/O in an Industrial environment:

The **small size** (mating face form factor of only 25% of RJ45) and **high board- and cable retention** (98 N cable pull force), making Mini-I/O a preferred cable to board connector solution for harsh IP20 environments.

References

1. R. Hult, Bishop & Associates Inc., www.connectorsupplier.com/praise-for-the-lowly-modular-plug.
2. IEC 61076-3-122/Ed.1.0 2017-05, Part 3-122: “Detail specification for 8-way, shielded, free and fixed connectors for I/O and Gigabit applications in harsh environments.”
3. J. Broeksteeg, IMAPS 2008, “Design of a high performance single beam contact for demanding and long life time applications in Industry and Telecom markets”.

More information

Industrial mini I/O website: www.te.com/products/mini-io.

INDUSTRIAL ETHERNET CONNECTOR BENCHMARK

Reliability comparison of RJ45 and Mini I/O

te.com

TE Connectivity, TE Connectivity (logo) and Every Connection Counts are trademarks. All other logos, products and/or company names referred to herein might be trademarks of their respective owners

The information given herein, including drawings, illustrations and schematics which are intended for illustration purposes only, is believed to be reliable. However, TE Connectivity makes no warranties as to its accuracy or completeness and disclaims any liability in connection with its use. TE Connectivity's obligations shall only be as set forth in TE Connectivity's Standard Terms and Conditions of Sale for this product and in no case will TE Connectivity be liable for any incidental, indirect or consequential damages arising out of the sale, resale, use or misuse of the product. Users of TE Connectivity products should make their own evaluation to determine the suitability of each such product for the specific application.

© 2017 TE Connectivity Ltd. family of companies All Rights Reserved.

1-1773941-5 Version # 05/2018