

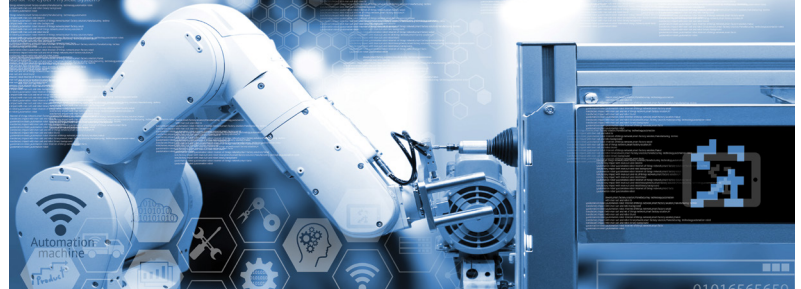


ROBOTICS APPLICATIONS

Samtec delivers Sudden Service® solutions that meet the sensor, computation and mobility requirements of today's advanced robotic applications. Industry-leading expertise in rugged/power and high-performance interconnect systems, combined with **Extended Life Product™** and **Severe Environment Testing** initiatives, enables quick-turn, cost-effective options for the performance, reliability and durability demands of robotics applications. Visit samtec.com/robotics or email robotics@samtec.com to learn more.

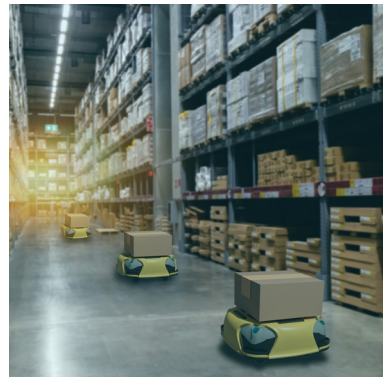
Product Features & Benefits

- High-reliability / rugged contact systems
- Small form factors / ultra-high densities
- Signal integrity-optimized solutions
- High vibration and high mating cycle systems
- High power interfaces



Design & Development Support

- Free online tools & resources: 3D Models, Prints, Picture Search & Solutionator® product builders
- Extensive testing initiatives that surpass typical industry standards and specifications
- Samtec cable assemblies also undergo cable flex and/or dynamic testing to prove consistent electrical stability in demanding applications
- Industry-leading component and system-level engineering expertise



Severe Environment Testing

SET is a Samtec initiative to test products beyond typical industry standards and specifications.

Products undergo additional testing to ensure they are *more than suitable* for military, space, automotive, industrial and other extreme applications.

For additional information and current test results, please visit samtec.com/SET or contact SET@samtec.com.



Extended Life Product™

E.L.P.™ products are tested to rigorous standards that evaluate contact resistance in simulated storage and field conditions. These include:

10 year Mixed Flowing Gas (MFG)

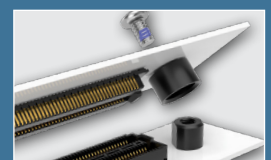
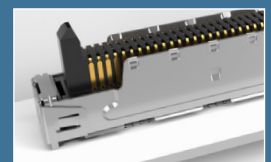
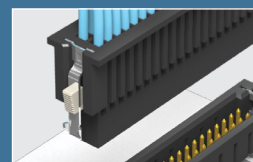
High Mating Cycles (250 to 2,500)

For complete details about the E.L.P.™ program and a full list of qualifying products and test results, please visit samtec.com/ELP or contact ASG@samtec.com.

RUGGEDIZING SOLUTIONS

Most Samtec interconnect systems are available with a variety of standard and optional rugged features to ensure quality and durability in any application.

- Jack Screws
- Positive Latching
- Friction Locks
- Retention Pins
- Board Locks
- Weld Tabs
- Guide Posts
- Shielding
- Screw Downs
- Board Standoffs



INTERCONNECT SOLUTIONS

High-Speed Board-to-Board

Ultra-dense, high-performance systems offer space-savings, along with contact durability and optimized signal integrity.



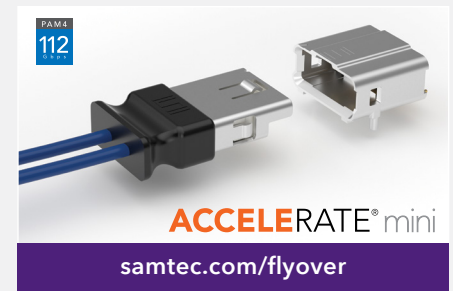
COM-HPC[®] Solutions

High-speed, high-density interconnect system meets specifications for high-performance Computer-on Modules.



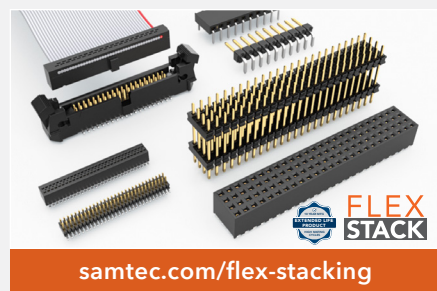
High-Speed Cable Assemblies

Extreme density/performance systems are available in small form factors with rugged features and design flexibility.



Flexible Stacking Systems

The industry's largest variety of board stacking interconnects, available in a variety of pitch, density, stack height, orientation, and contact system options.



High-Reliability Tiger Eye[™] Systems

Rugged Tiger Eye[™] connectors are rated to 1,000+ cycles, and are available in a variety of pitches and terminations, with mating discrete wire & IDC cable systems.



High Power Systems

High power and power/signal combo connectors (up to 60 Amps), available with high-density power blades, small form factor and flexible designs.



Custom & Modified Products

Samtec offers application-specific design support, from simple modifications to completely new & custom designs.



Discrete Wire Systems

High-cycle systems feature high-reliability contacts, a choice of pitches, rugged features and power designs.



Rugged I/O Systems

Solutions with high-reliability contacts, EMI shielding, IP67/8 sealing, rugged 38999 shells, high mating cycles & more.



Visit [samtec.com](https://www.samtec.com) to view our full line of interconnect solutions.

© OCTOBER 2025, SAMTEC INC.